



40 Southampton Street Berkeley NSW

3  1 

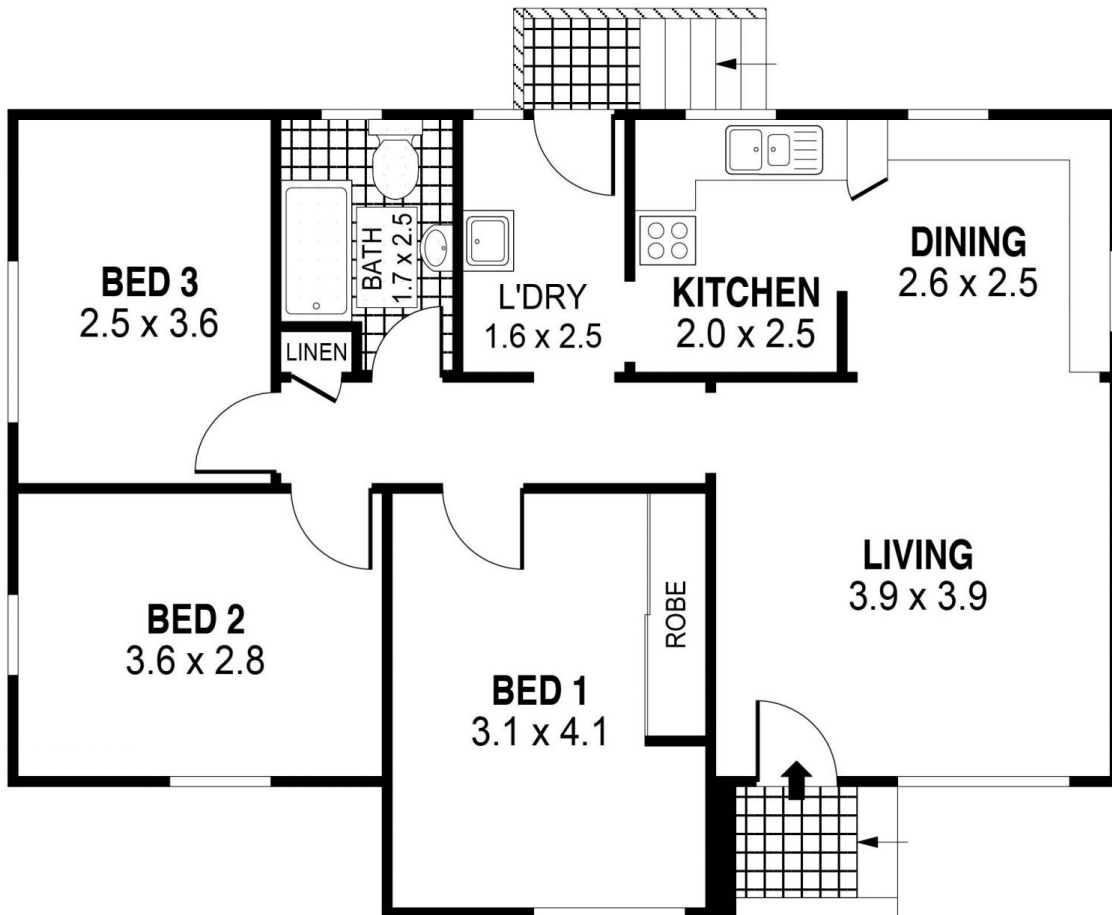
40 Southampton Street offers a blank canvas to create the ideal first home. The platform is set with a blend of location and space. Only minutes' walk to the lake foreshore, this single level 3 bedroom home sits on an impressive 651m² block with the potential to extend or start again, subject to council approval.

Type : House
Building Size : 8 sqm
Land Size : 651 sqm
View : <https://www.mcneice.com.au/8483026>

The Main Features:

- 3 spacious bedrooms. Main with built in wardrobe
- L-shaped kitchen, dining and living areas. Dining with built in bench
- Huge level and private backyard, perfect for the kids to play in

[For full version visit the website](https://www.mcneice.com.au)



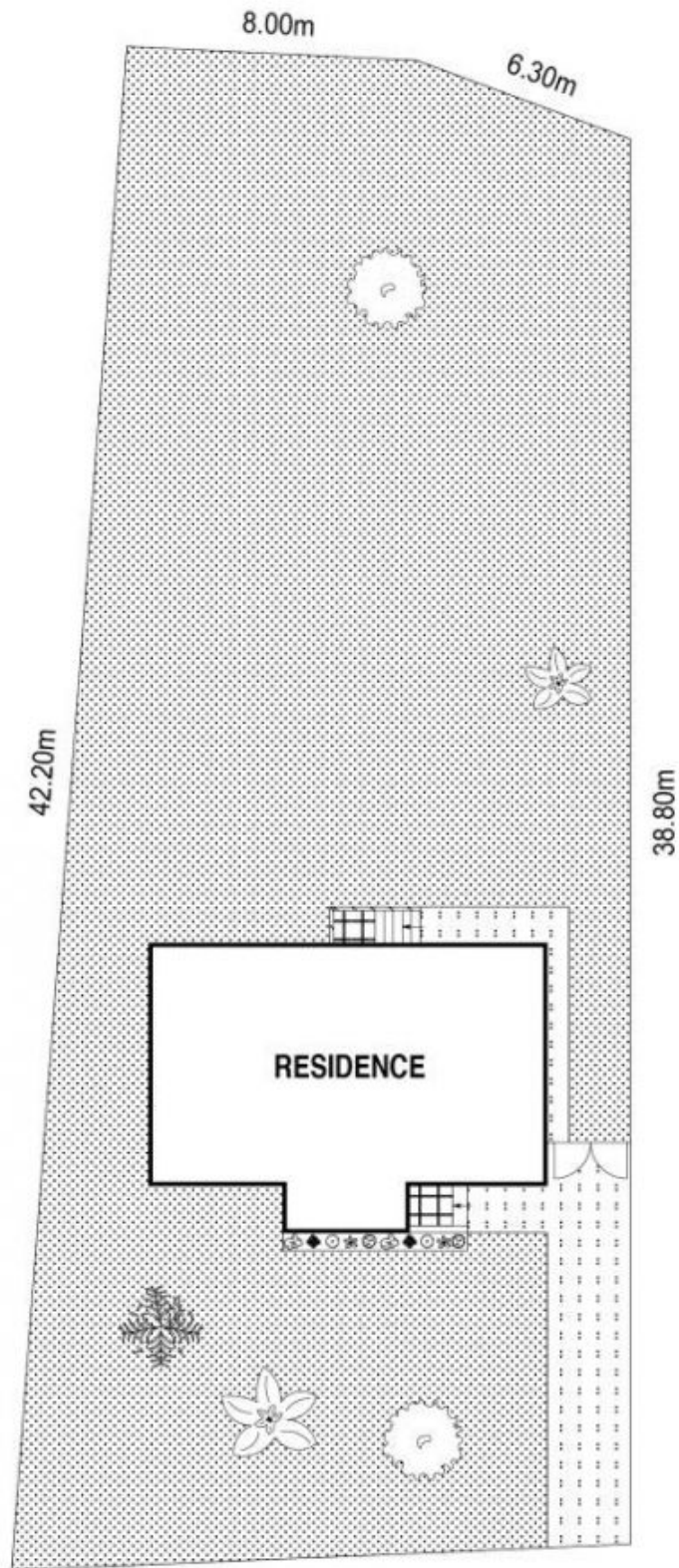
PLANS SHOWN ONLY INDICATIVE OF LAYOUT. DIMENSIONS ARE APPROXIMATE.
Ref. No: 90508



INT : 74m²
EXT : 2m²

40 SOUTHAMPTON STREET

BERKELEY



17.10m
SITE PLAN



SCALE (METRES)

PLANS SHOWN ONLY INDICATIVE OF LAYOUT. DIMENSIONS ARE APPROXIMATE.
Ref. No: 90508



40 SOUTHAMPTON STREET

BERKELEY