



120 Haywards Bay Drive Haywards Bay NSW

4 2 2

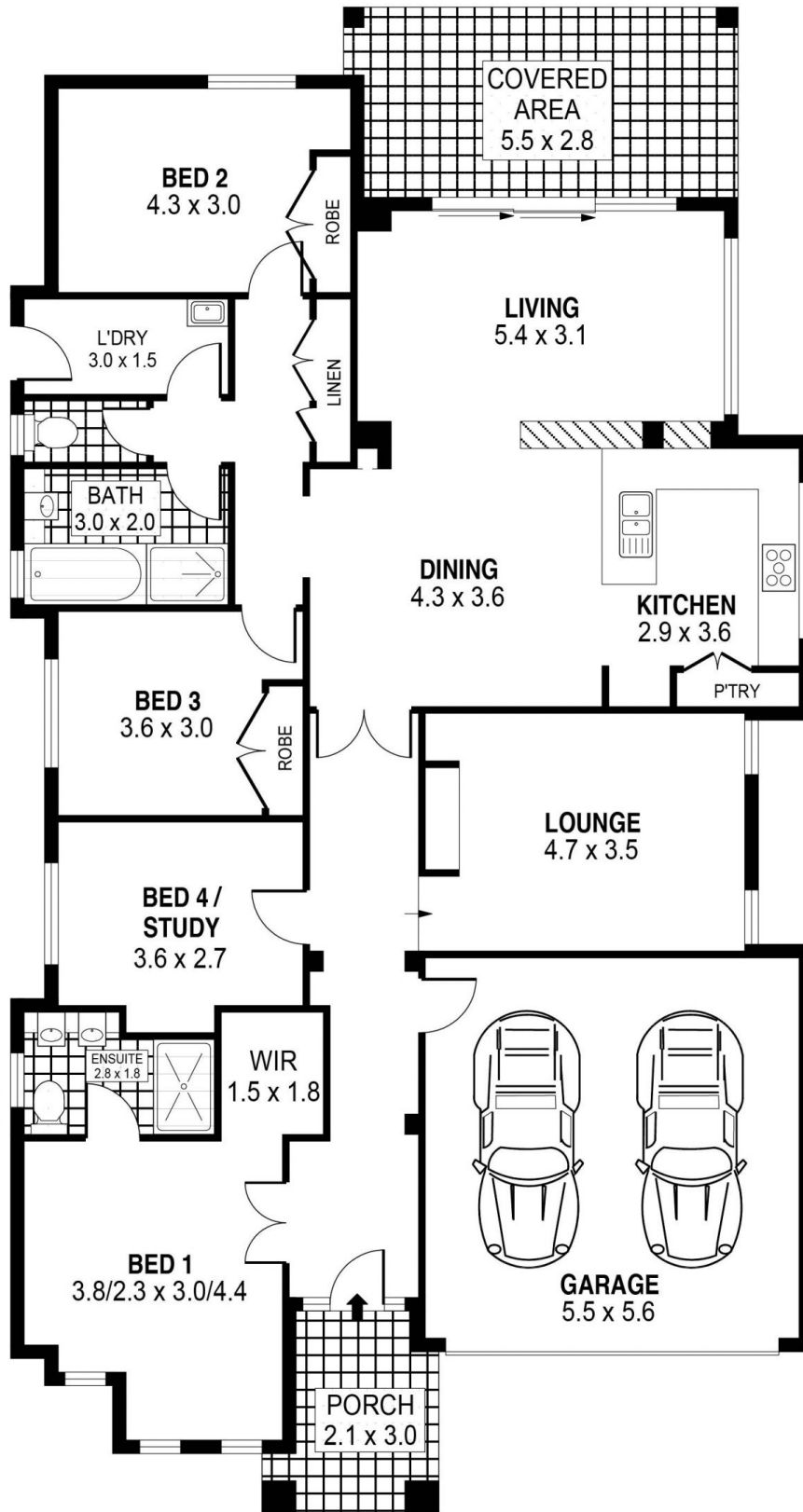
Perfectly positioned amongst quality homes in a great lakeside estate, is this single level family home with plenty of yard space & a sunny northern aspect with sweeping uninterrupted views.

Type : House
Price : \$ 830,000
View : <https://www.mcneice.com.au/8483024>

Designed with families in mind, the home offers plenty of space and functionality throughout, whilst enjoying the added benefit of easy access north and south bound.

Offering great energy efficiency with the solar panels installed, multiple separate living areas, tasteful contemporary kitchen, 4 good sized bedrooms, 2 modern bathrooms, covered outdoor entertaining area and a double lock up garage to top it off.

[For full version visit the website](#)

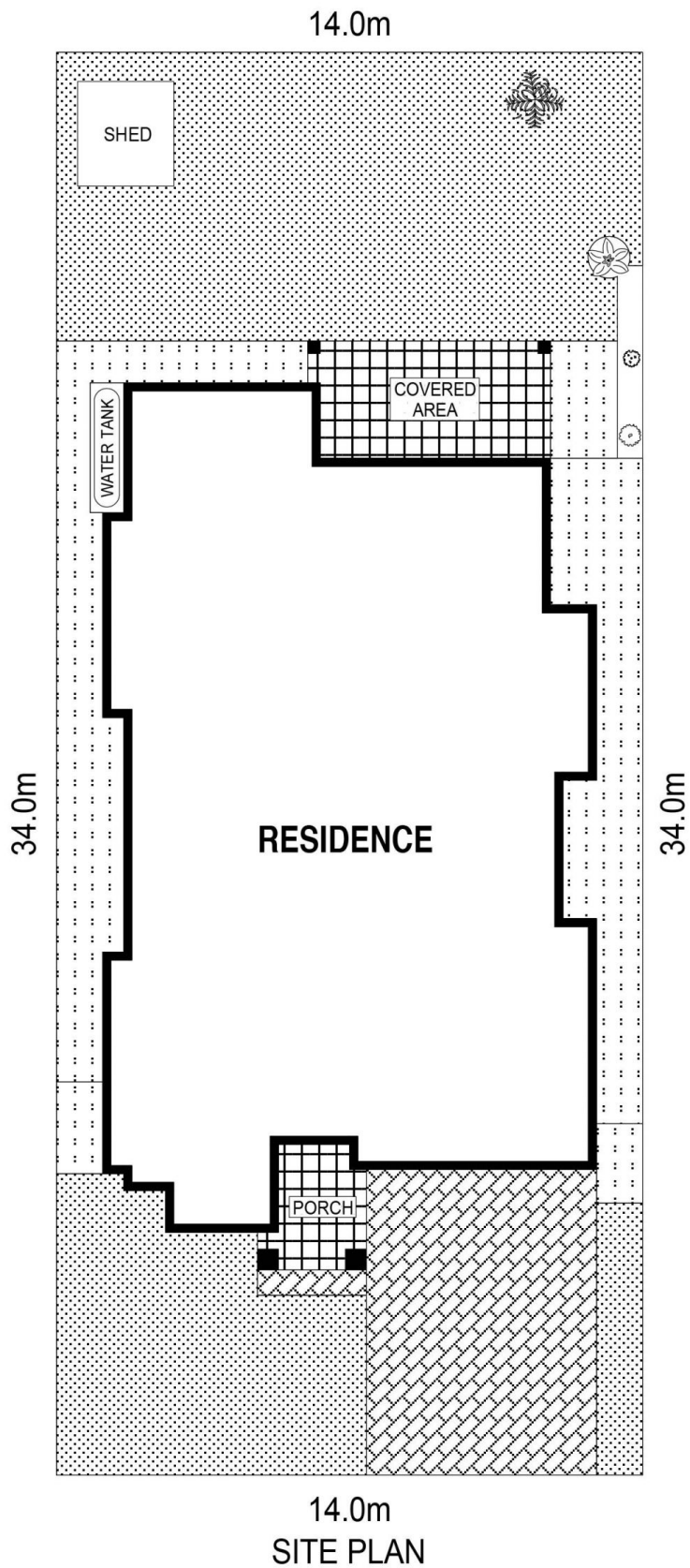


PLANS SHOWN ONLY INDICATIVE OF LAYOUT. DIMENSIONS ARE APPROXIMATE.
Ref. No: 89683

INT : 157m²
EXT : 22m²
GARAGE : 31m²

120 HAYWARDS BAY DRIVE

HAYWARDS BAY



14.0m
SITE PLAN



SCALE (METRES)

PLANS SHOWN ONLY INDICATIVE OF LAYOUT. DIMENSIONS ARE APPROXIMATE.
Ref. No: 89883