




11 Gerongar Crescent Haywards Bay NSW

3  2  3 

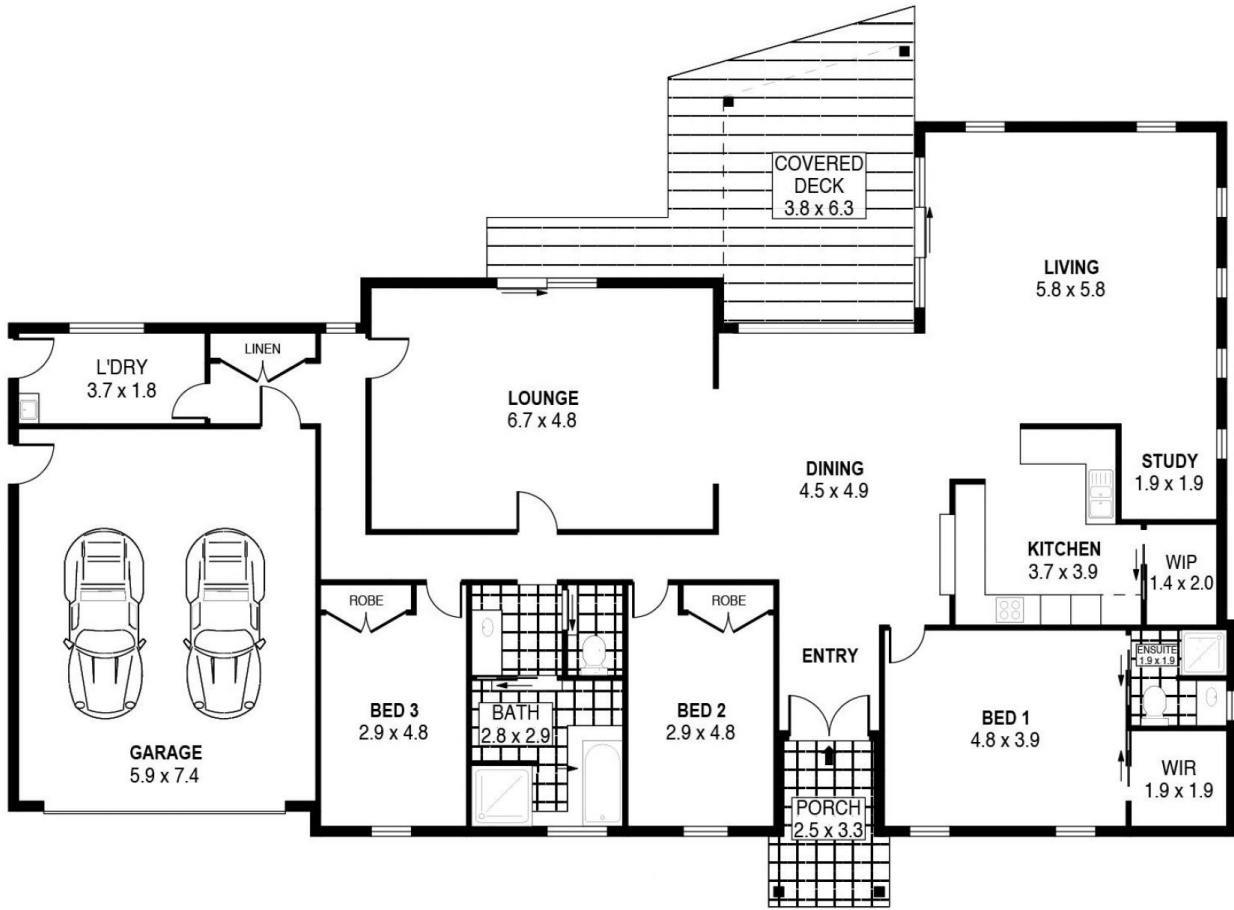
This spaciouly designed, single level, family home is spread over a 639m2 corner block and is situated amongst quality homes in a family friendly lakeside estate.

As you enter the home, you'll be greeted by quality, space, immaculate presentation and a sense of elegance. The unique custom-built design makes this beautiful home one of a kind, as its practical floor plan caters to the growing family or downsizers alike.

Offering 3 generously sized bedrooms, 2 modern bathrooms, 2 huge living areas, separate study nook, private outdoor alfresco deck area for entertaining guests, a big double lock up garage and side yard access to park.

[For full version visit the website](https://www.mcneice.com.au)

Type : House
Price : \$ 850,000
View : <https://www.mcneice.com.au/8483022>

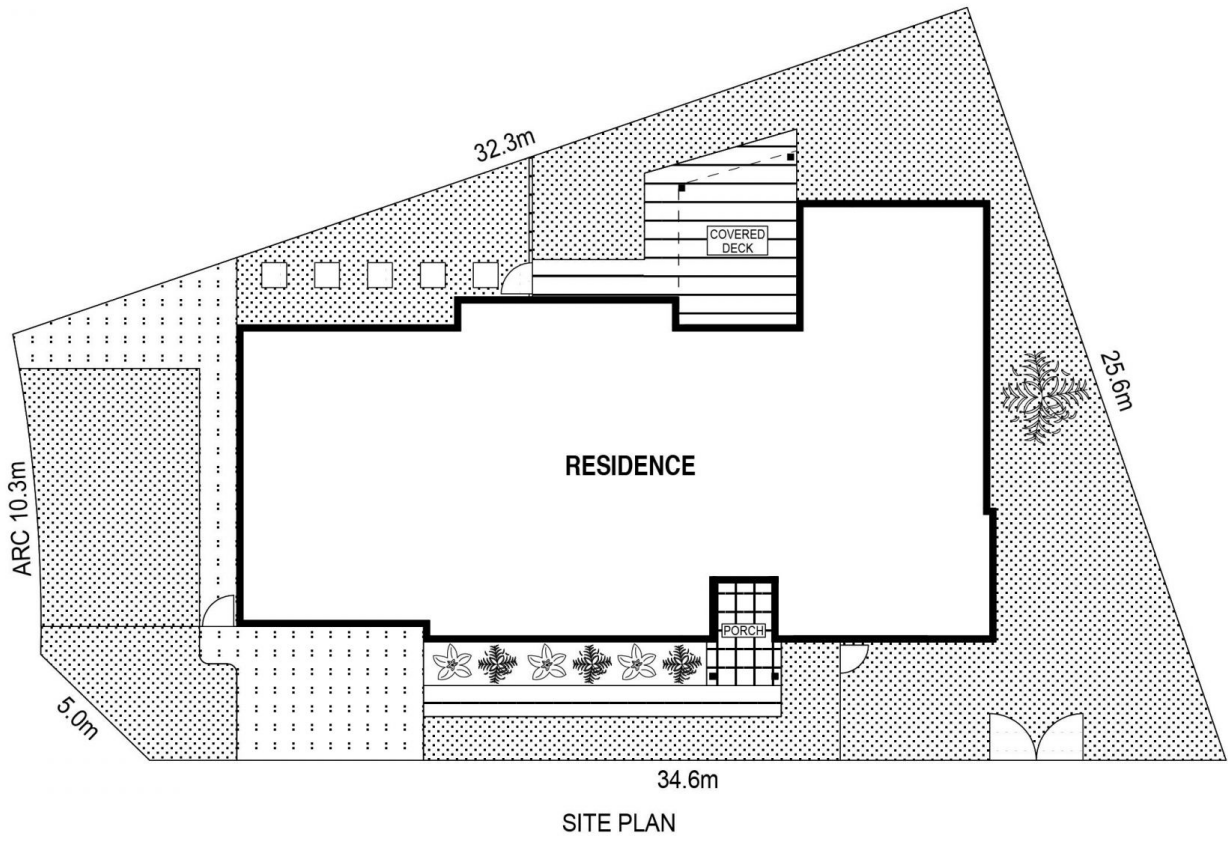


PLANS SHOWN ONLY INDICATIVE OF LAYOUT. DIMENSIONS ARE APPROXIMATE.
 Ref. No: 89831

INT : 211m²
 EXT : 38m²
 GARAGE : 44m²

11 GERONGAR CRESCENT

HAYWARDS BAY



SCALE (METRES)

PLANS SHOWN ONLY INDICATIVE OF LAYOUT. DIMENSIONS ARE APPROXIMATE.
 Ref. No: 89831