



28 Brooks Reach Road Horsley NSW

3 2 2

Nestled amongst quality homes in the family friendly estate of Brooks Reach, is this great, single level, family home with outstanding outdoor entertaining which can be shared with all of your guests.

Type : House

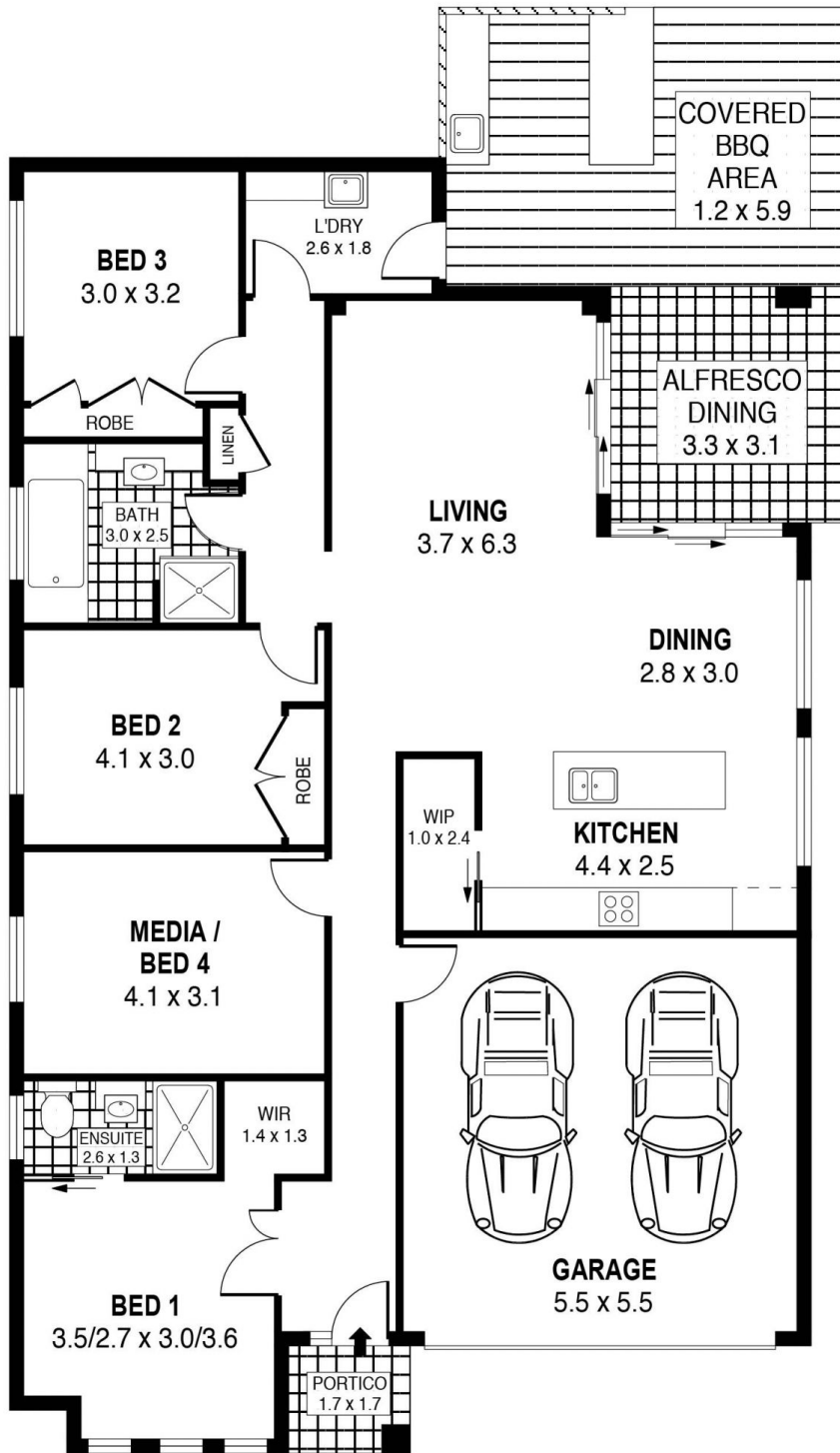
Price : \$ 825,500

View : <https://www.mcneice.com.au/8483019>

Its adaptable open plan layout offers 3 good sized bedrooms with multiple living areas. However, for those needing a 4th bedroom, the media room could certainly be used for that purpose.

Enjoying great energy efficiency with the solar panels installed, 2 modern bathrooms, quality kitchen, ducted reverse cycle air conditioning throughout, loads of natural sunlight, amazing alfresco entertaining area with an in-built

[For full version visit the website](https://www.mcneice.com.au)

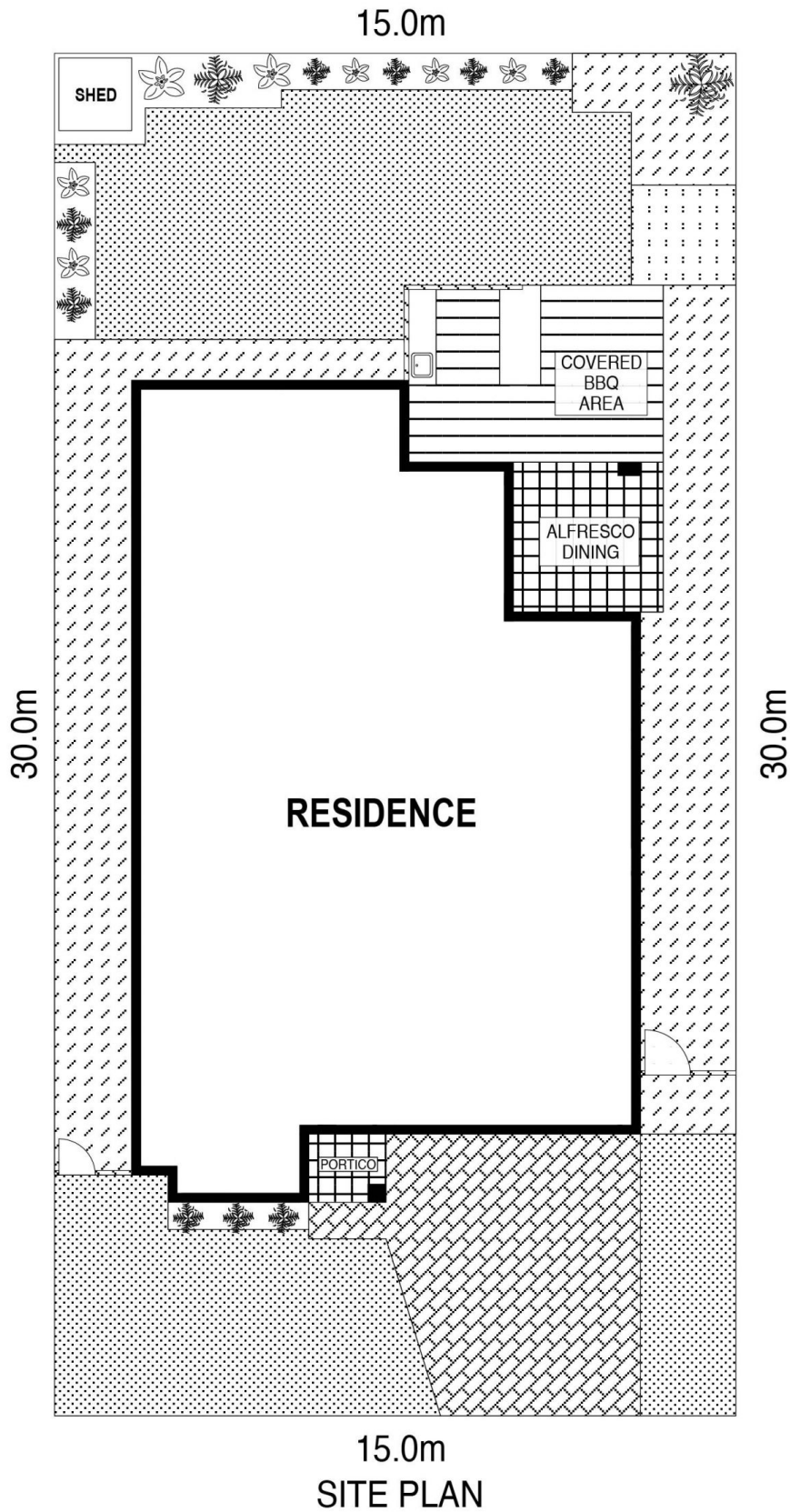


PLANS SHOWN ONLY INDICATIVE OF LAYOUT. DIMENSIONS ARE APPROXIMATE.
 Ref. No: 89244

INT : 130m²
 EXT : 35m²
 GARAGE : 30m²

28 BROOKS REACH ROAD

HORSLEY



SCALE (METRES)

PLANS SHOWN ONLY INDICATIVE OF LAYOUT. DIMENSIONS ARE APPROXIMATE.
Ref. No: 89244

28 BROOKS REACH ROAD

HORSLEY