

5 Muntoonen Crescent Horsley NSW

4 2 4

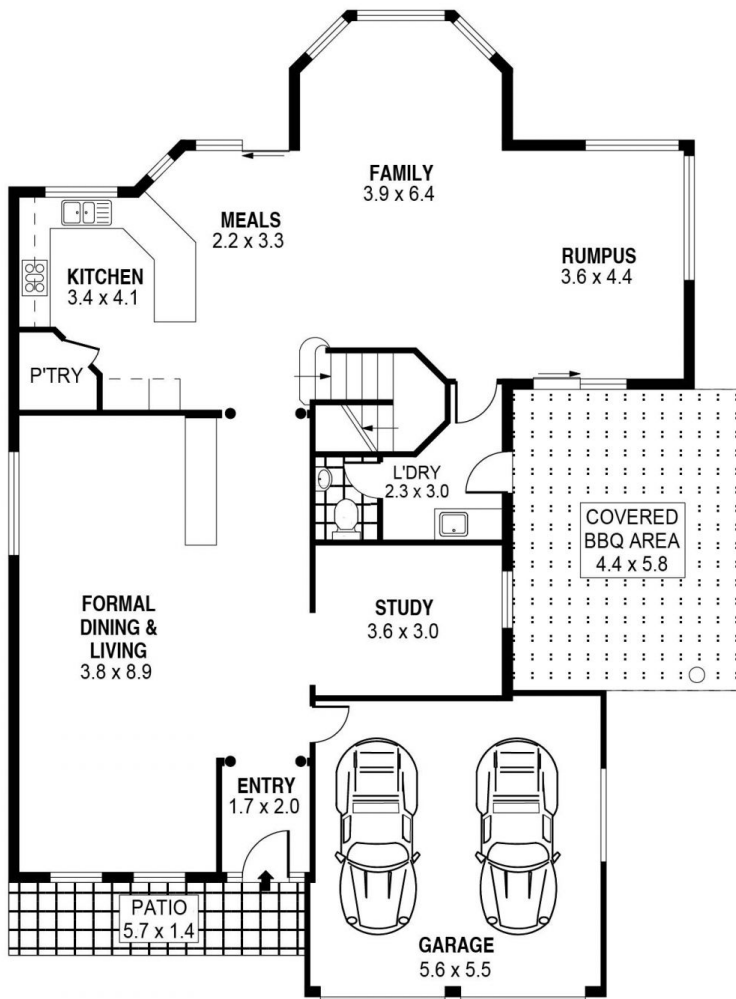
Muntoonen Crescent needs no introduction. Arguably the best pocket of real estate in Horsley, this home clearly showcases space, opulence and the ultimate "homely" feeling. From the unique design, additional parking bay, 75,000L salt water pool and 3 living areas, this home is everything your family desires!

Type : House
Price : \$ 1,150,000
Building Size : 33 sqm
Land Size : 699.7 sqm
View : <https://www.mcneice.com.au/8483018>

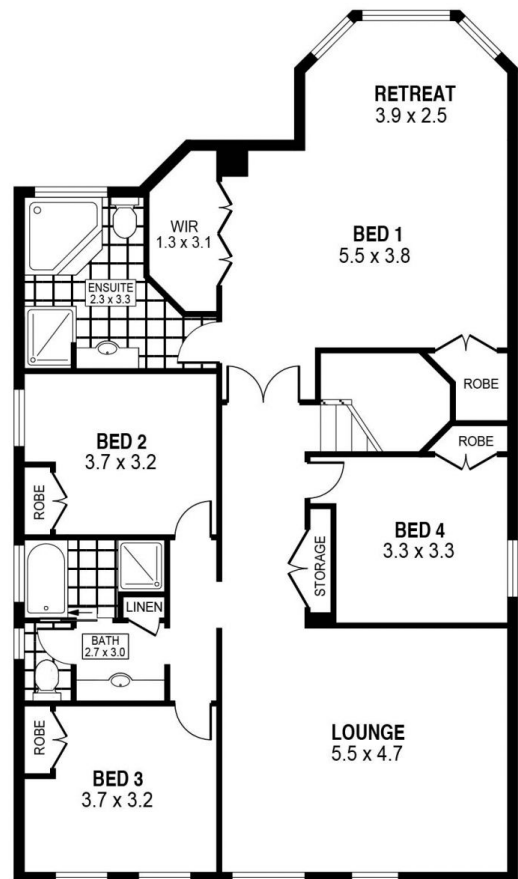
The Main Features:

- 4 spacious bedrooms all on the upper level with additional 5th bedroom or study downstairs. The main bedroom features double doors, 3 wardrobes, an ensuite and plenty of space for a sitting area within the bay windows. Ideal in winter for reading a book and enjoying the escarpment

[For full version visit the website](https://www.mcneice.com.au)



GROUND LEVEL



UPPER LEVEL



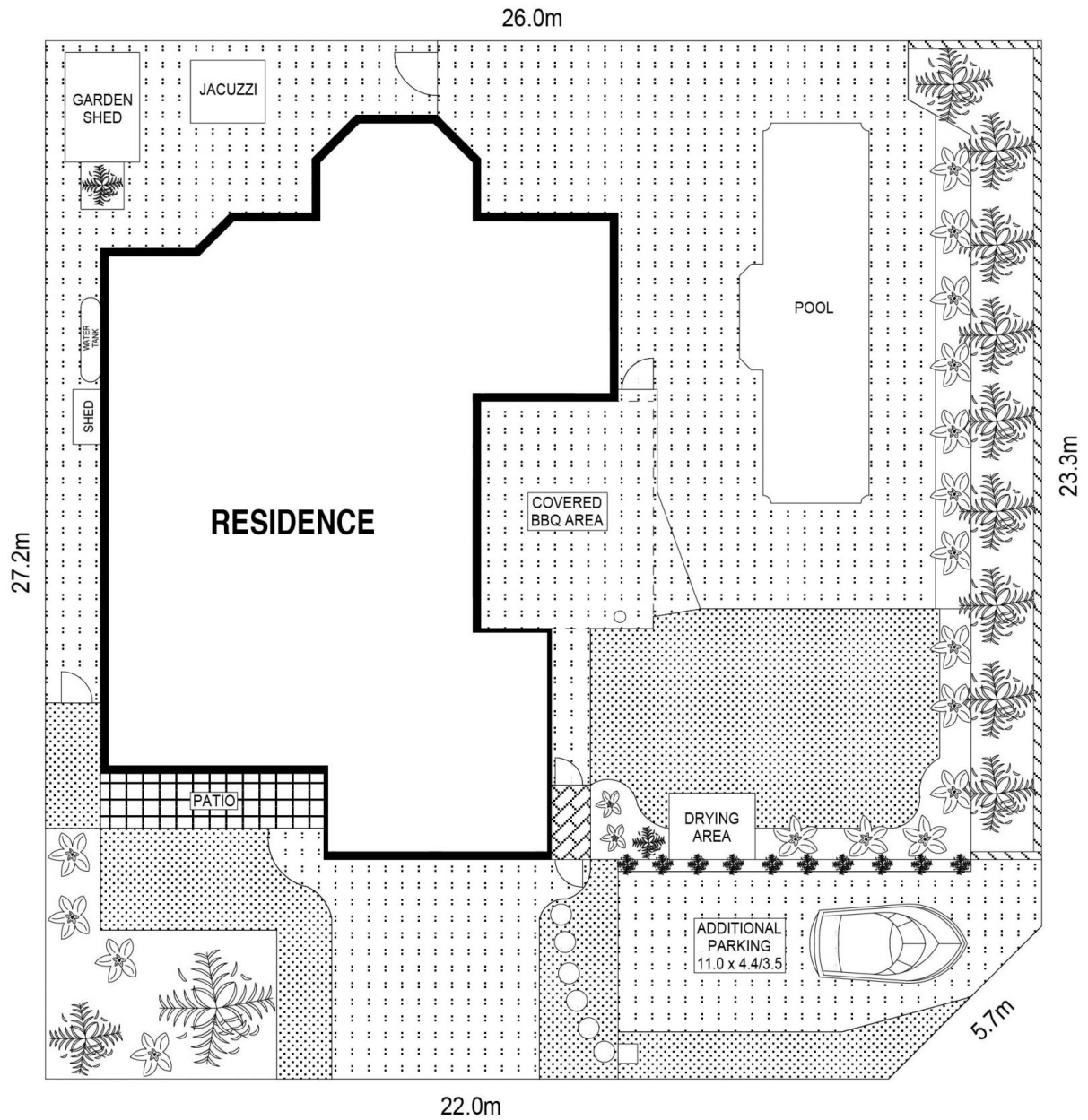
SCALE (METRES)

PLANS SHOWN ONLY INDICATIVE OF LAYOUT. DIMENSIONS ARE APPROXIMATE.
Ref. No: 89142

INT : 274m²
EXT : 46m²
GARAGE : 34m²

5 MUNDOONEN CRESCENT

HORSLEY



SITE PLAN



SCALE (METRES)

PLANS SHOWN ONLY INDICATIVE OF LAYOUT. DIMENSIONS ARE APPROXIMATE.
Ref. No: 89142