



10B Saddleback Crescent Kembla Grange NSW

3 2 1

A beautiful near new torrens-titled home set over two levels with the ideal sized backyard and alfresco area. This is where all family dreams start, from the low maintenance lifestyle, great community estate and overall layout, this one will tick all your boxes!

Type : Townhouse

Price : \$ 671,250

View : <https://www.mcneice.com.au/8483015>

The Main Features:

- 3 spacious bedrooms with built in robes and main with large ensuite and walk in wardrobe
- Open plan living, kitchen and dining area on the lower level
- Entry foyer features a sitting / lounge room, ideal for the study area or additional kids space

[For full version visit the website](https://www.mcneice.com.au)



SITE PLAN

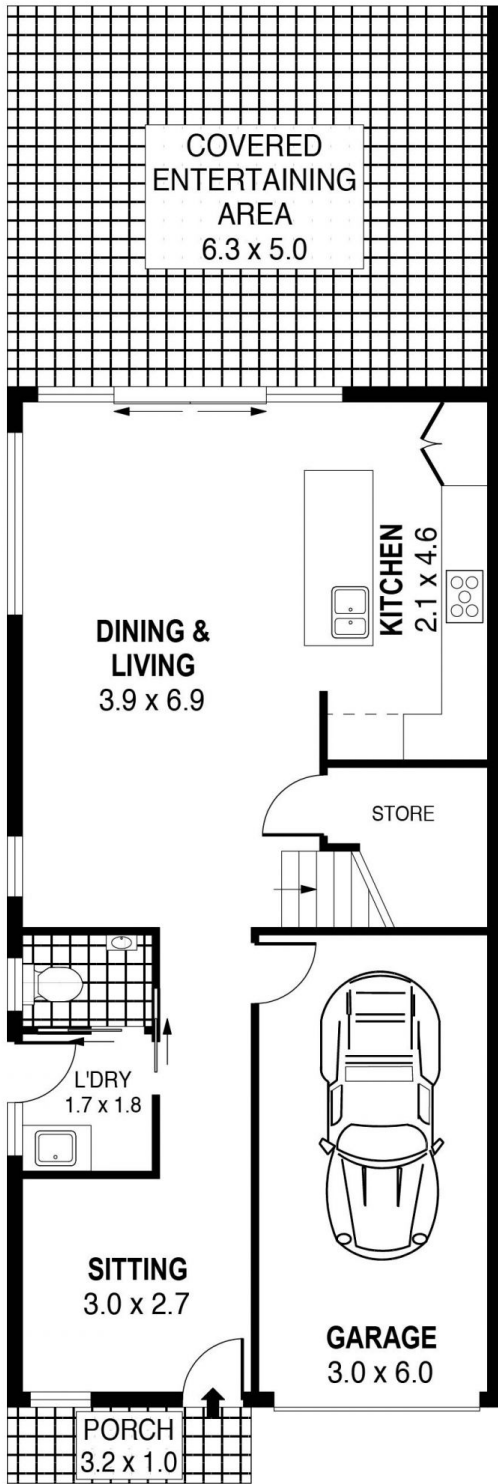


SCALE (METRES)

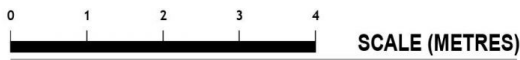
PLANS SHOWN ONLY INDICATIVE OF LAYOUT. DIMENSIONS ARE APPROXIMATE.
Ref. No: 89016

10B SADDLEBACK CRESCENT

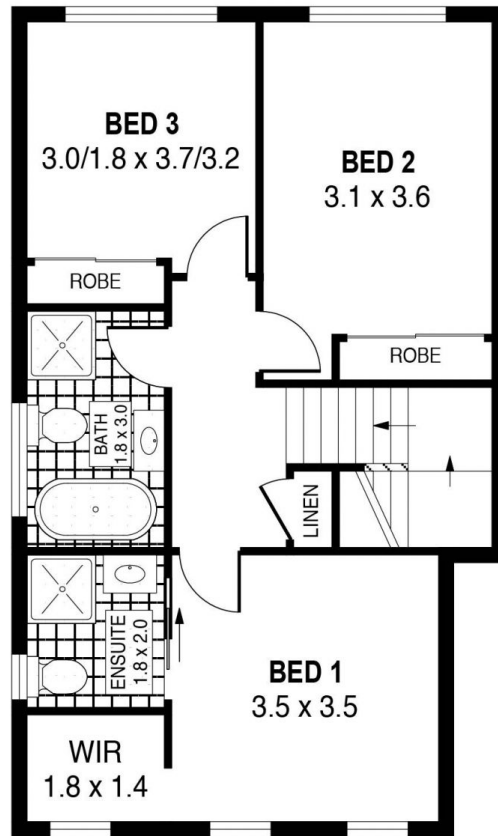
KEMBLA GRANGE



GROUND LEVEL



PLANS SHOWN ONLY INDICATIVE OF LAYOUT. DIMENSIONS ARE APPROXIMATE.
Ref. No: 89016



UPPER LEVEL

INT	: 122m ²
EXT	: 35m ²
GARAGE	: 18m ²

10B SADDLEBACK CRESCENT

KEMBLA GRANGE