



## 1 Phoenix Way Horsley NSW

4 2 2

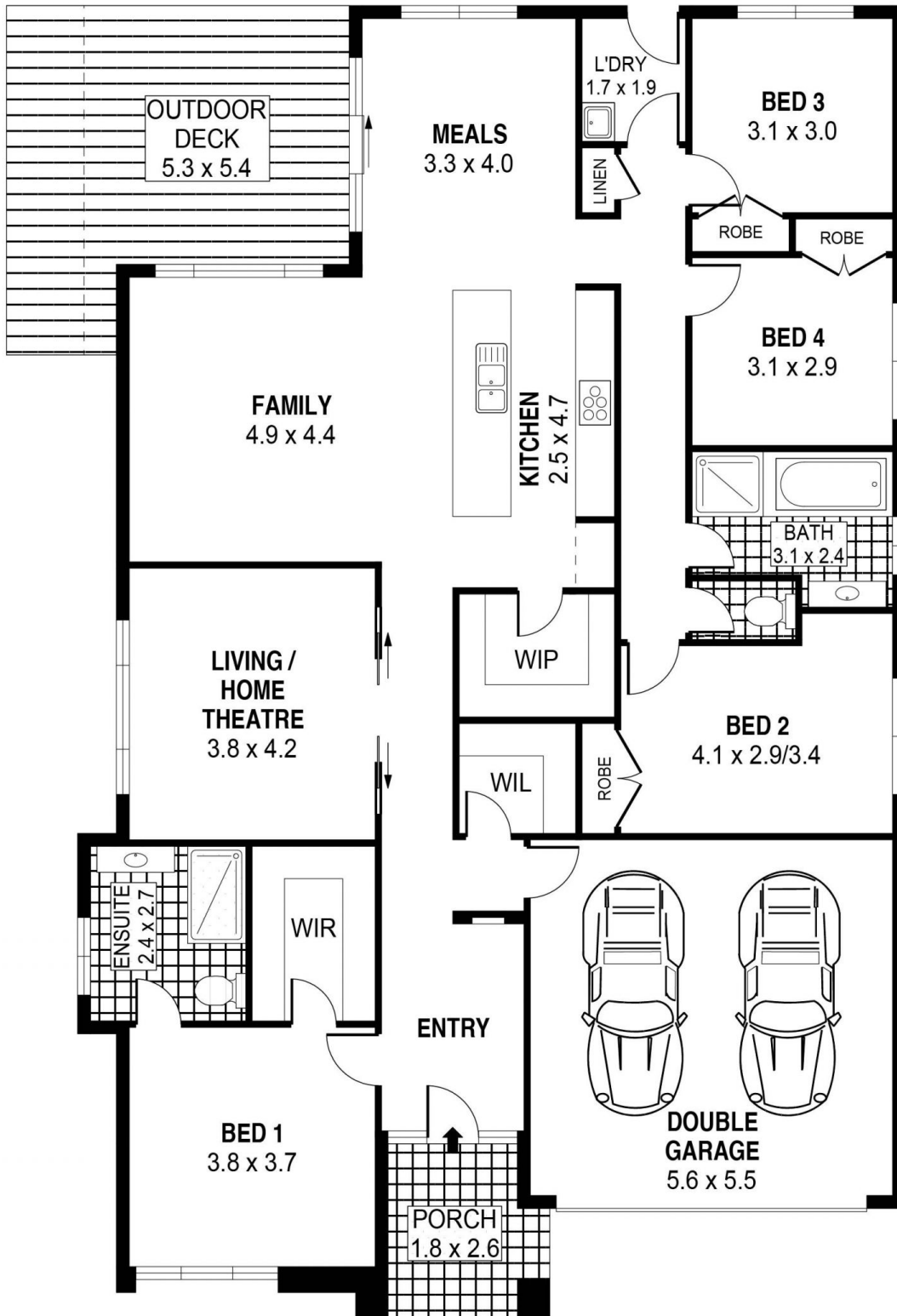
1 Phoenix Way Horsley offers the ultimate in family living. The entertainer's dream provides plenty of storage, multiple living spaces, large bedrooms and overall, a great practical layout to suit any type of family.

**Type** : House  
**Price** : \$ 840,000  
**View** : <https://www.mcneice.com.au/8483007>

### The Main Features:

- 4 large bedrooms, main with walk in wardrobe and big ensuite
- 2 separate living areas, one as a media room and a separate dining area
- Large galley style kitchen with a generous walk in pantry, stone benchtops, loads of cupboards, dishwasher, 5 burner gas cook top and electric oven

[For full version visit the website](https://www.mcneice.com.au)

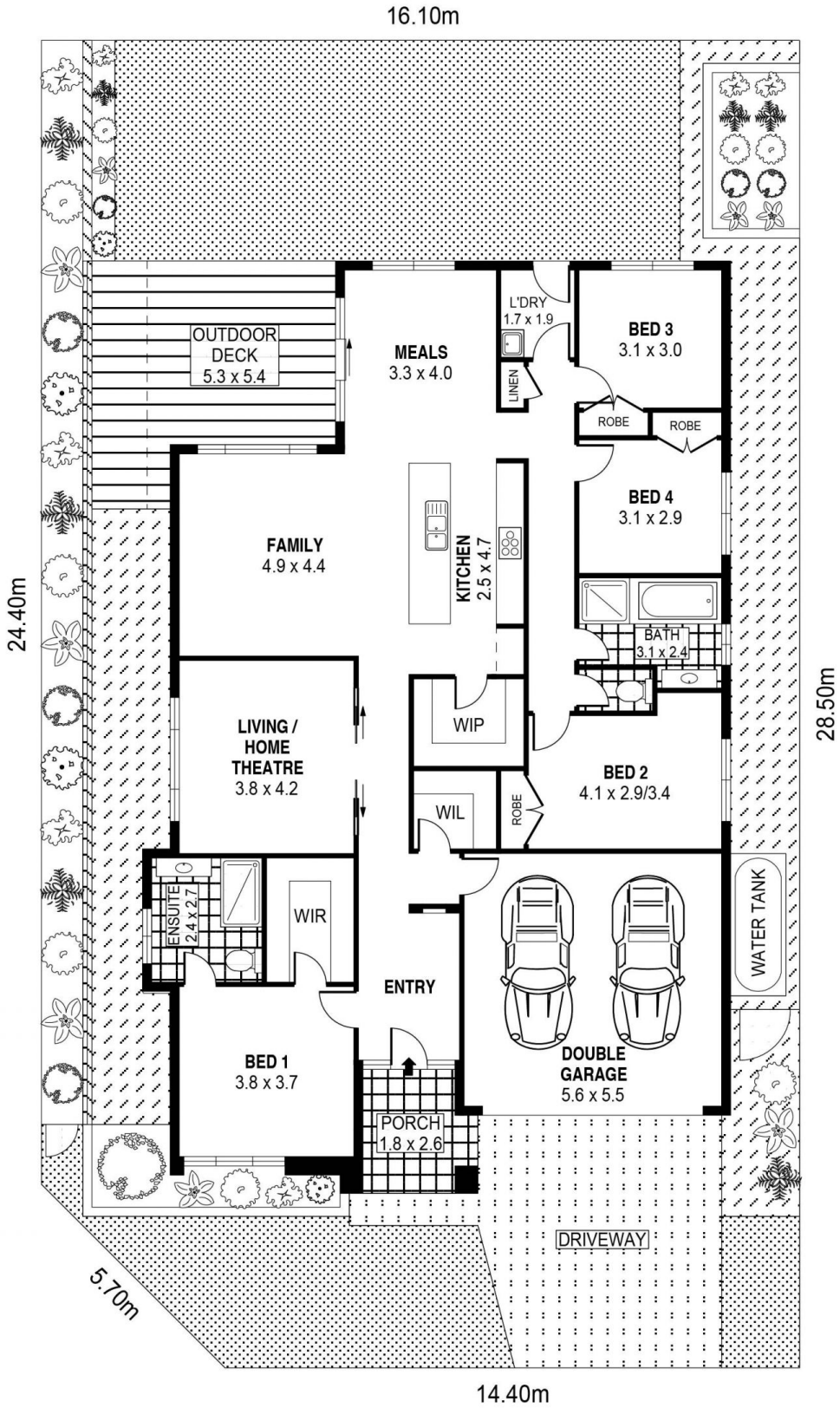


PLANS SHOWN ONLY INDICATIVE OF LAYOUT. DIMENSIONS ARE APPROXIMATE.  
Ref. No: 88459

INT : 172m<sup>2</sup>  
EXT : 30m<sup>2</sup>  
GARAGE : 31m<sup>2</sup>

1 PHOENIX WAY

HORSLEY



SCALE (METRES)

PLANS SHOWN ONLY INDICATIVE OF LAYOUT. DIMENSIONS ARE APPROXIMATE.  
Ref. No: 88459

INT : 172m<sup>2</sup>  
EXT : 30m<sup>2</sup>  
GARAGE : 31m<sup>2</sup>

1 PHOENIX WAY

HORSLEY