

26 Sunray Crescent Horsley NSW

3 2 2

single-level | peaceful | renovated

Welcomed by a peaceful cul-de-sac street and enjoying a stunning escarpment backdrop, this renovated three-bedroom home offers a spacious practical layout and is the perfect opportunity for buyers to enter the market, upsize for the whole family or downsize to single-level living.

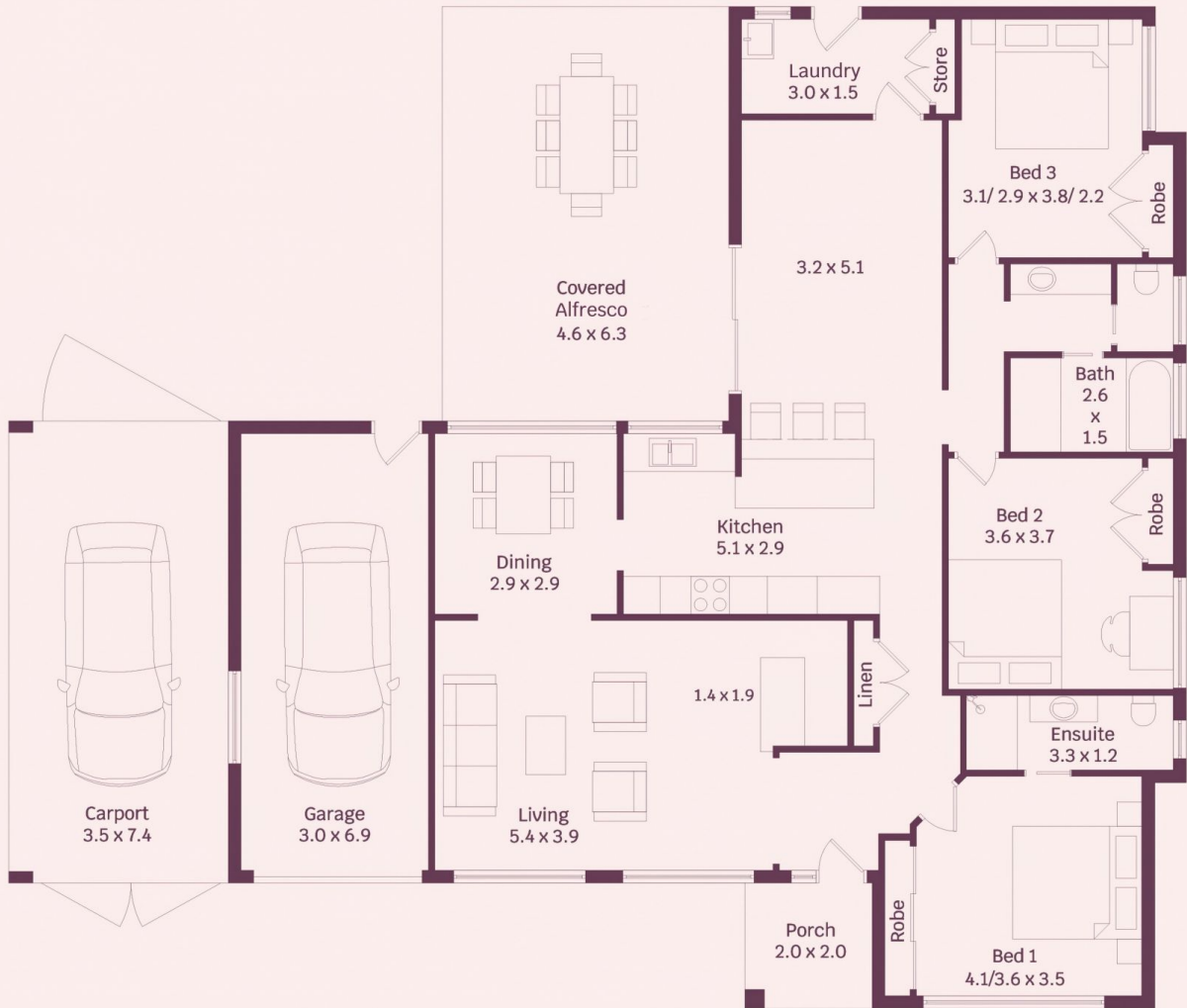
what you will love...

- > renovated single-level home ready to move in
- > main bedroom with built-in wardrobe and modern ensuite
- > two other generous-sized bedrooms with built-in

[For full version visit the website](https://www.mcneice.com.au/8483005)

Type : House
Price : \$ 900,000
Land Size : 620 sqm
View : <https://www.mcneice.com.au/8483005>

26 Sunray Crescent, Horsley



HOUSE INTERNAL AREA 135m²

Plans shown are for presentation purposes and are not part of any legal document.

Dimensions are approximate