



158 Horsley Drive Horsley NSW

3  1  2 

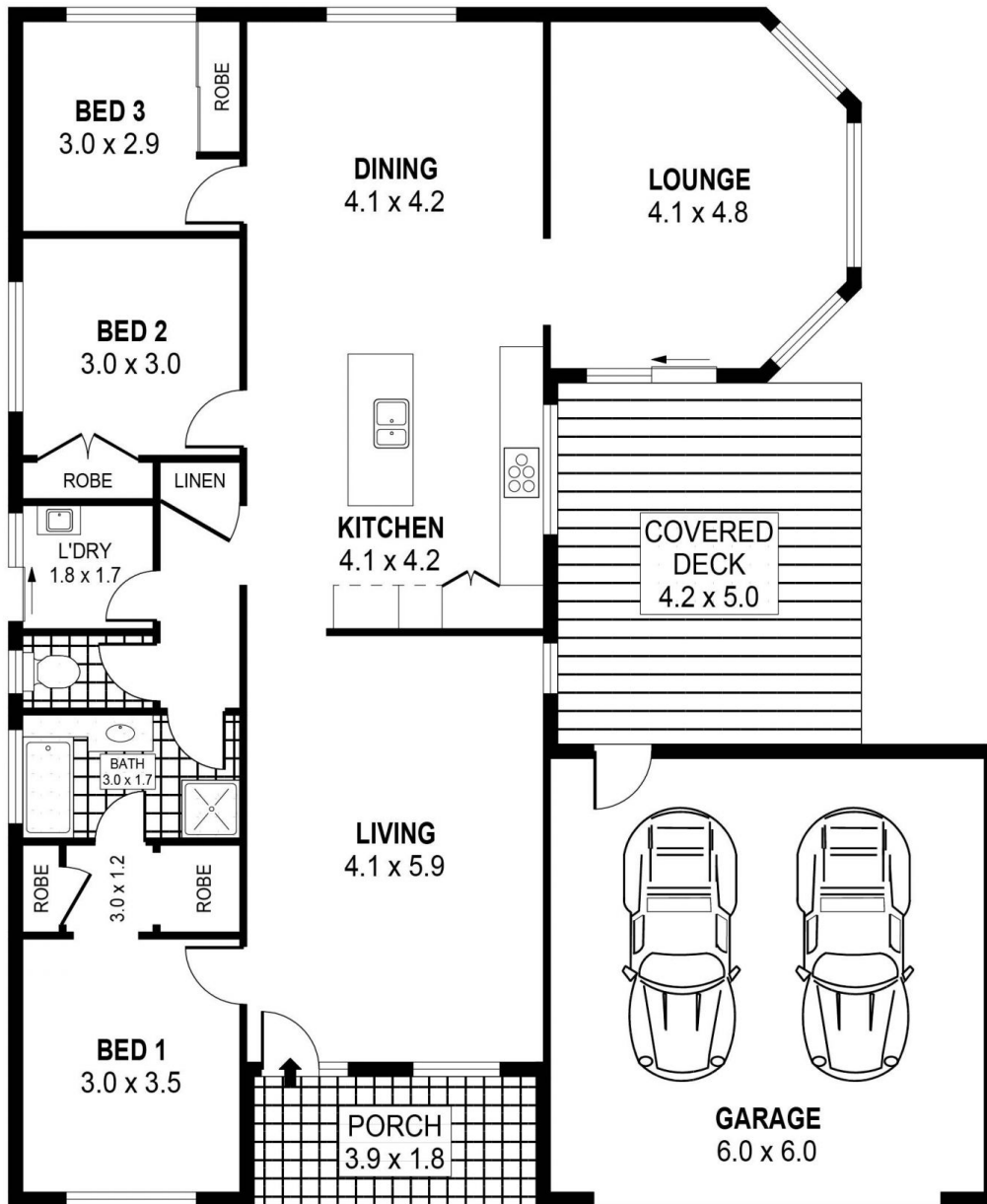
158 Horsley Drive literally has it all. Set in a top location and surrounded by great neighbours this one will suit anyone, from first homeowners to anyone looking to live the single level lifestyle. The home is set on a 576m² level block with loads of unique features. Some of these include, beautiful new kitchen, 3 living areas, outdoor entertaining area, potential side access and the list goes on. One you need to truly inspect to appreciate the quality and functionality of the home.

The Main Features:

- 3 spacious bedrooms all with built in robes and main with dual wardrobes

[For full version visit the website](https://www.mcneice.com.au)

Type : House
Price : \$ 617,250
Building Size : 18 sqm
Land Size : 576 sqm
View : <https://www.mcneice.com.au/8483002>

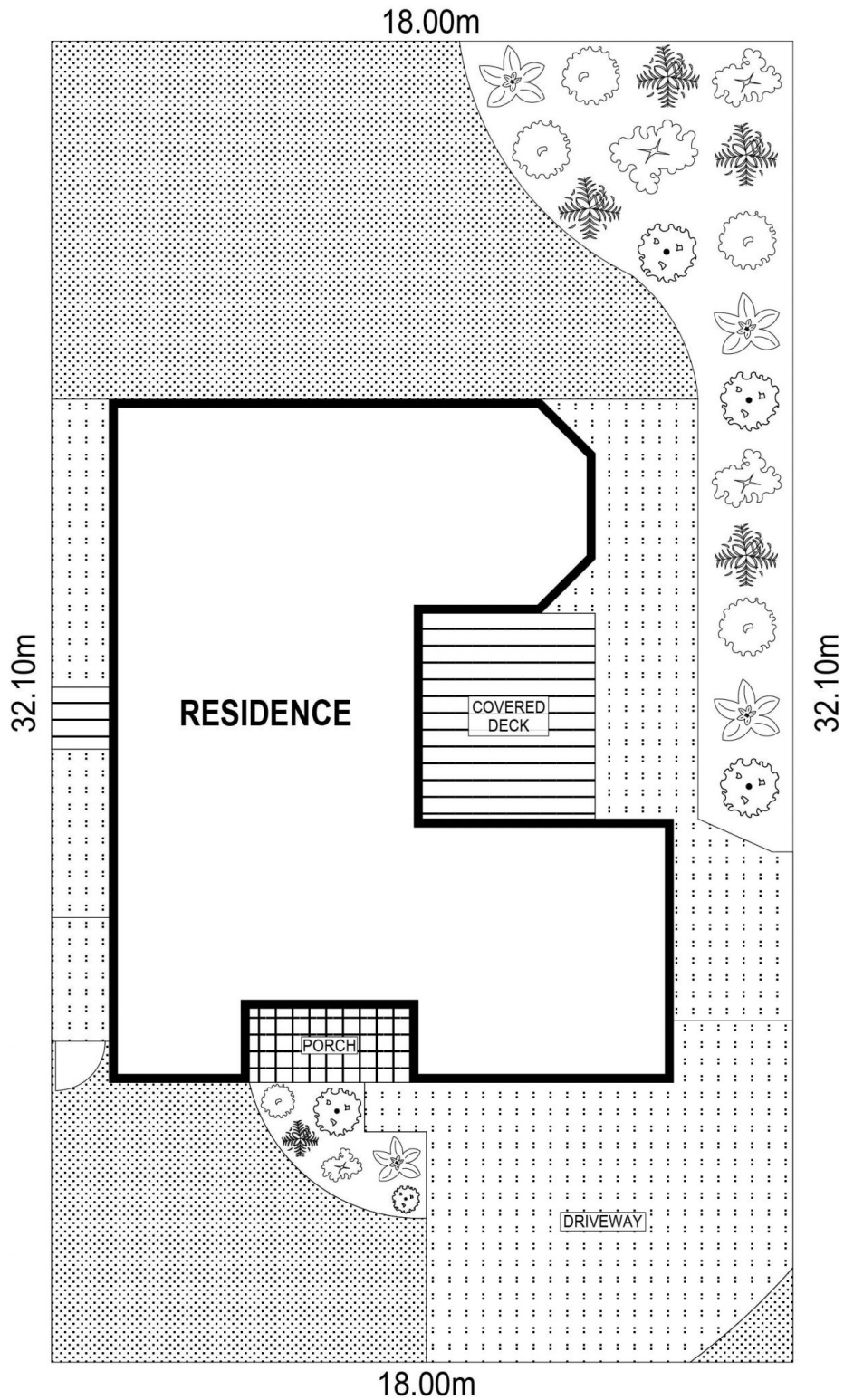


PLANS SHOWN ONLY INDICATIVE OF LAYOUT. DIMENSIONS ARE APPROXIMATE.
Ref. No: 73847

INT : 128m²
EXT : 28m²
GARAGE : 36m²

158 HORSLEY DRIVE

HORSLEY



SITE PLAN



SCALE (METRES)

PLANS SHOWN ONLY INDICATIVE OF LAYOUT. DIMENSIONS ARE APPROXIMATE.
Ref. No: 73847

158 HORSLEY DRIVE

HORSLEY