



47 Avondale Road Avondale NSW

3 1 4

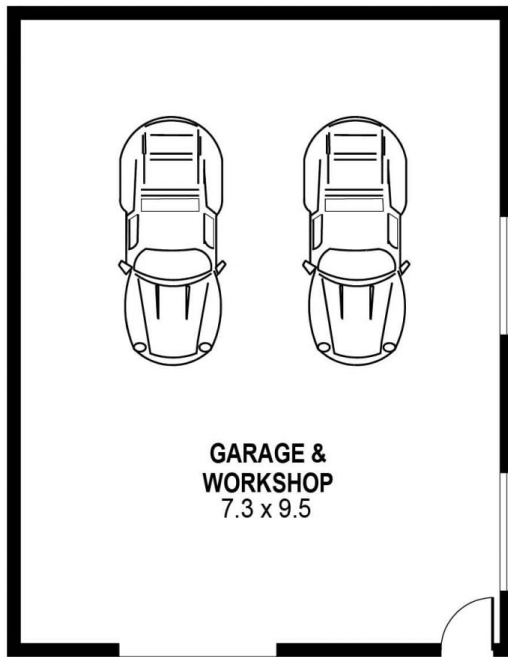
Defining "The Great Australian Dream" is to own a spacious and comfortable home. 47 Avondale Road holds the dream in the yard. Set on a huge level 892.4m² the yard seems endless both front and back. The property is well positioned on the block being set back from the street just enough to capture the sun the whole way around the home. Truly a beautiful country style cottage.

Type : House
Price : \$ 557,500
Building Size : 18 sqm
Land Size : 892.4 sqm
View : <https://www.mcneice.com.au/8482999>

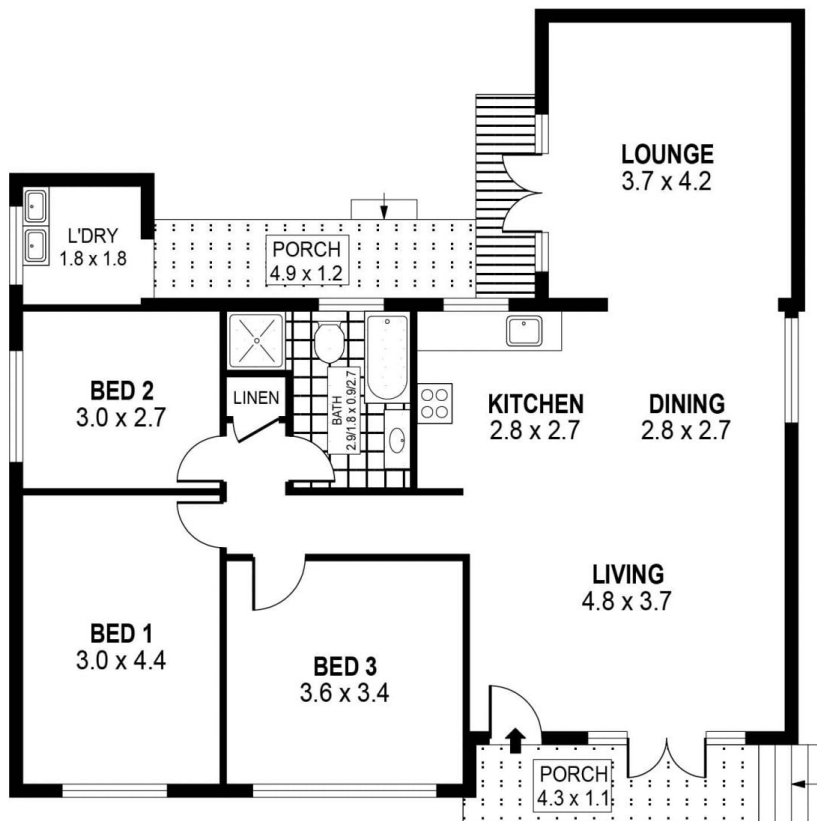
The Main Features:

- 3 spacious bedrooms all with high ceilings and loads of floor space
- Huge 69m² garage with side access. Perfect for the boats, caravan, trailer or toys

[For full version visit the website](https://www.mcneice.com.au)



DETACHED

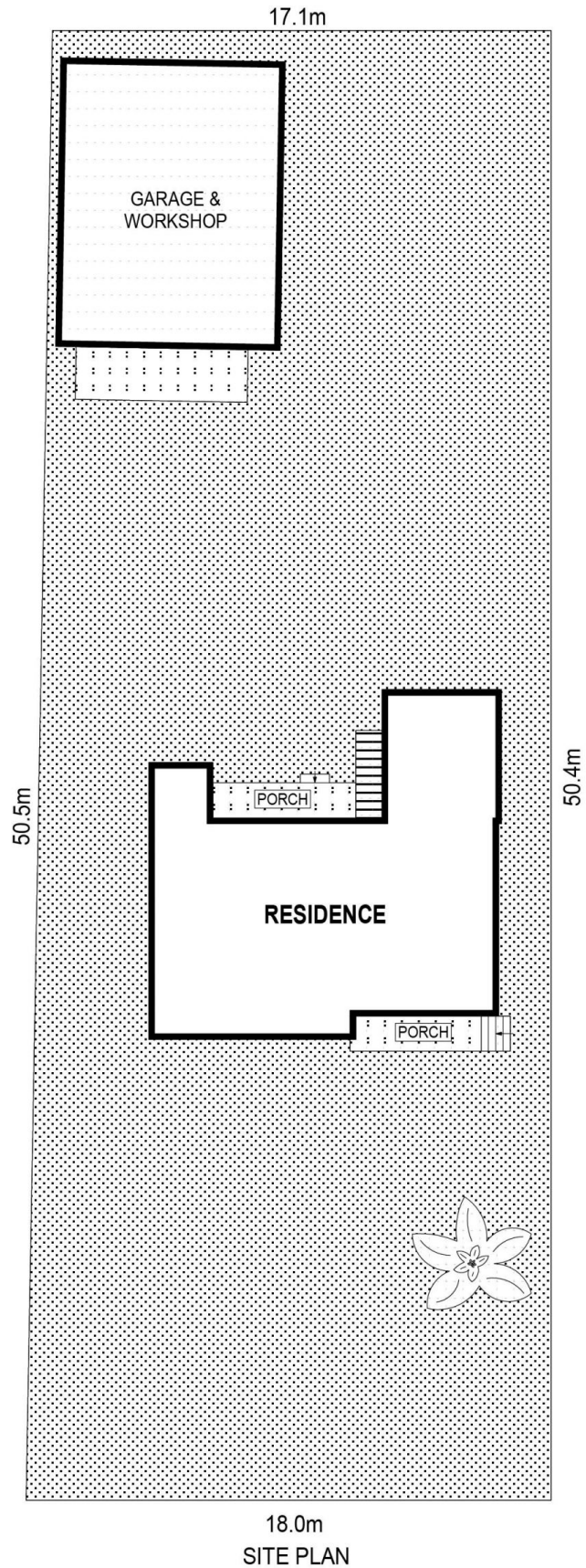


PLANS SHOWN ONLY INDICATIVE OF LAYOUT. DIMENSIONS ARE APPROXIMATE.
Ref. No: 73135

INT	: 96m ²
EXT	: 9m ²
L'DRY	: 3m ²
DETACHED	: 69m ²

47 AVONDALE ROAD

AVONDALE



SCALE (METRES)

PLANS SHOWN ONLY INDICATIVE OF LAYOUT. DIMENSIONS ARE APPROXIMATE.
Ref. No: 73135

LAND SIZE : 885m²

47 AVONDALE ROAD

AVONDALE