



5 Barham Place Horsley NSW

4 2 2

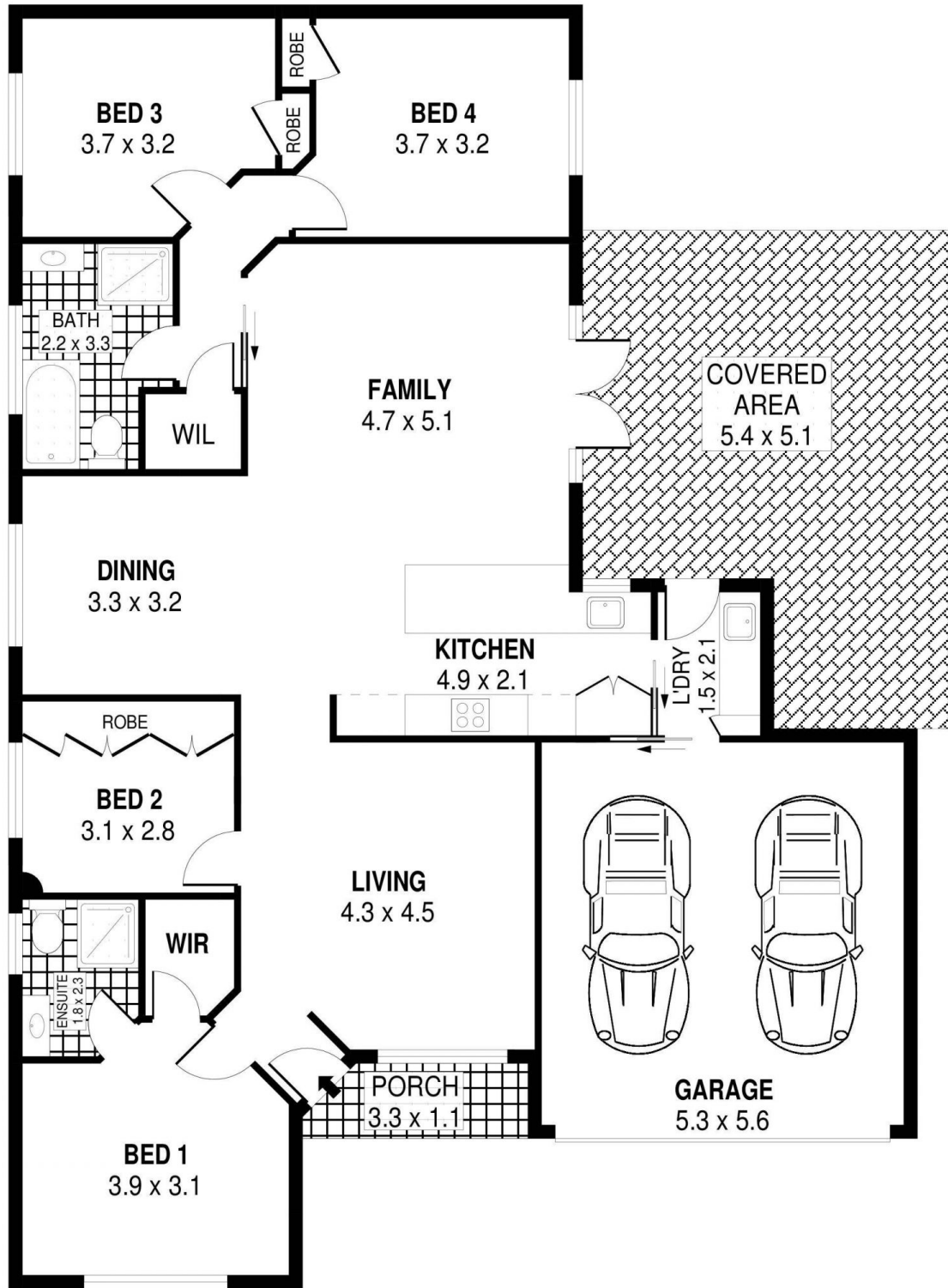
Welcome to 5 Barham Place Horsley, located within a private pocket of real estate. This is where contemporary design meets family functionality. Incorporating a tranquil lifestyle, single level build and low maintenance features, this 4-bedroom home with a stunning inground saltwater pool offers everything you're looking for & more!

Type : House
Building Size : 22 sqm
Land Size : 540 sqm
View : <https://www.mcneice.com.au/8482961>

The Main Features:

- 4 spacious bedrooms, main with walk in robe and ensuite with under floor heating
- Open plan living, kitchen & dining areas with additional formal lounge at the front of the home
- Large modern galley style kitchen with loads of bench

[For full version visit the website](https://www.mcneice.com.au)



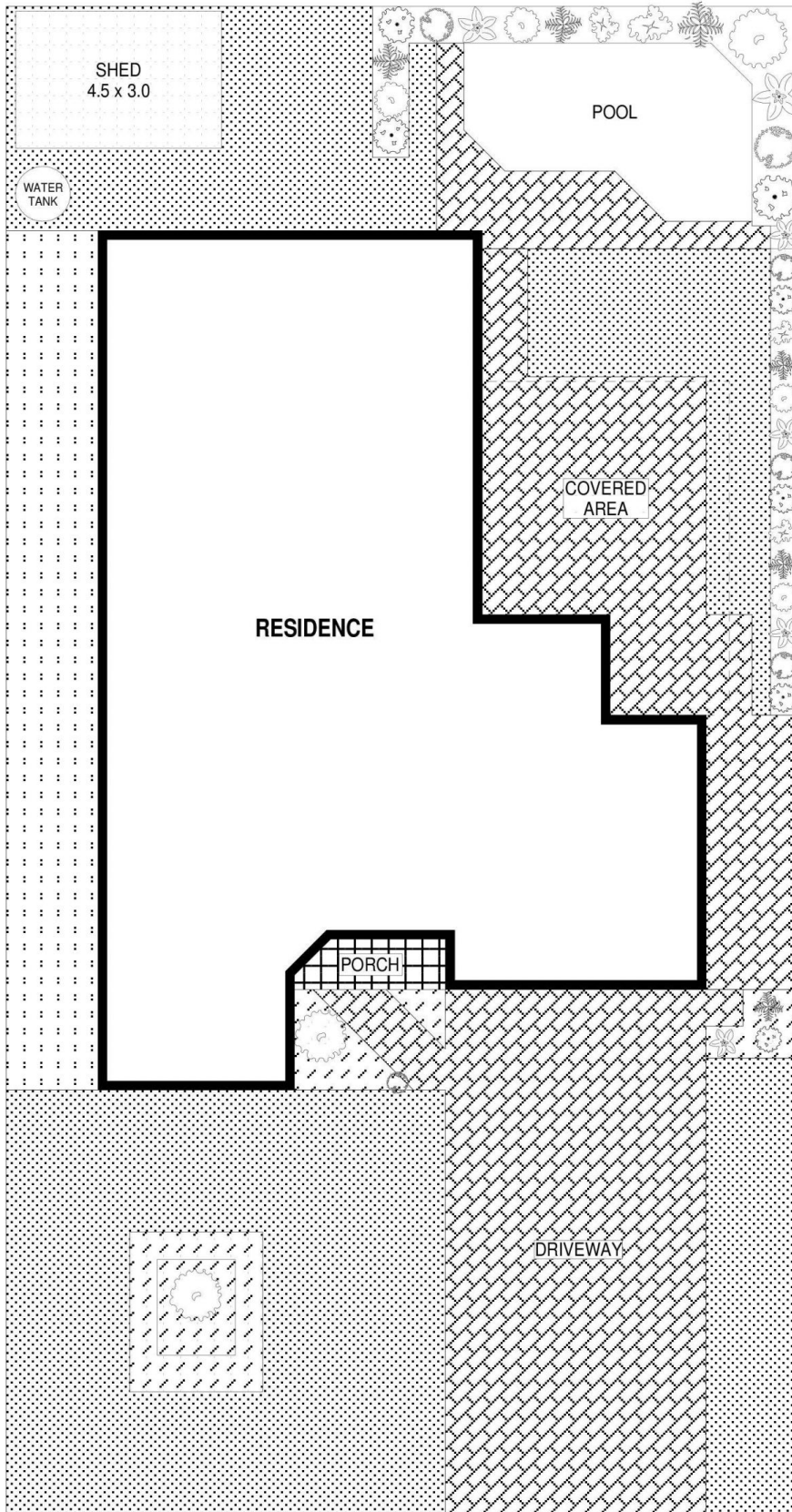
SCALE (METRES)

PLANS SHOWN ONLY INDICATIVE OF LAYOUT. DIMENSIONS ARE APPROXIMATE.
Ref. No: 101201

INT :138m²
EXT : 37m²
GARAGE : 30m²

5 BARNHAM PLACE

HORSLEY



SITE PLAN

PLANS SHOWN ONLY INDICATIVE OF LAYOUT. DIMENSIONS ARE APPROXIMATE.
Ref. No: 101201

5 BARNHAM PLACE

HORSLEY