



3 Riverpark Way Horsley NSW

4 2 2

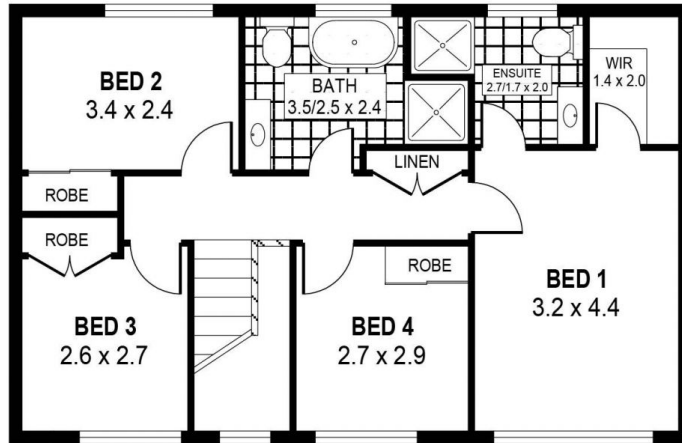
Quietly tucked away in a cul-de-sac street is this immaculately renovated 4 bedroom family home which offers size, quality & entertaining at it's very finest.

Conveniently positioned within close proximity to Dapto Public School, Dapto CBD, M1 motor way and much more.

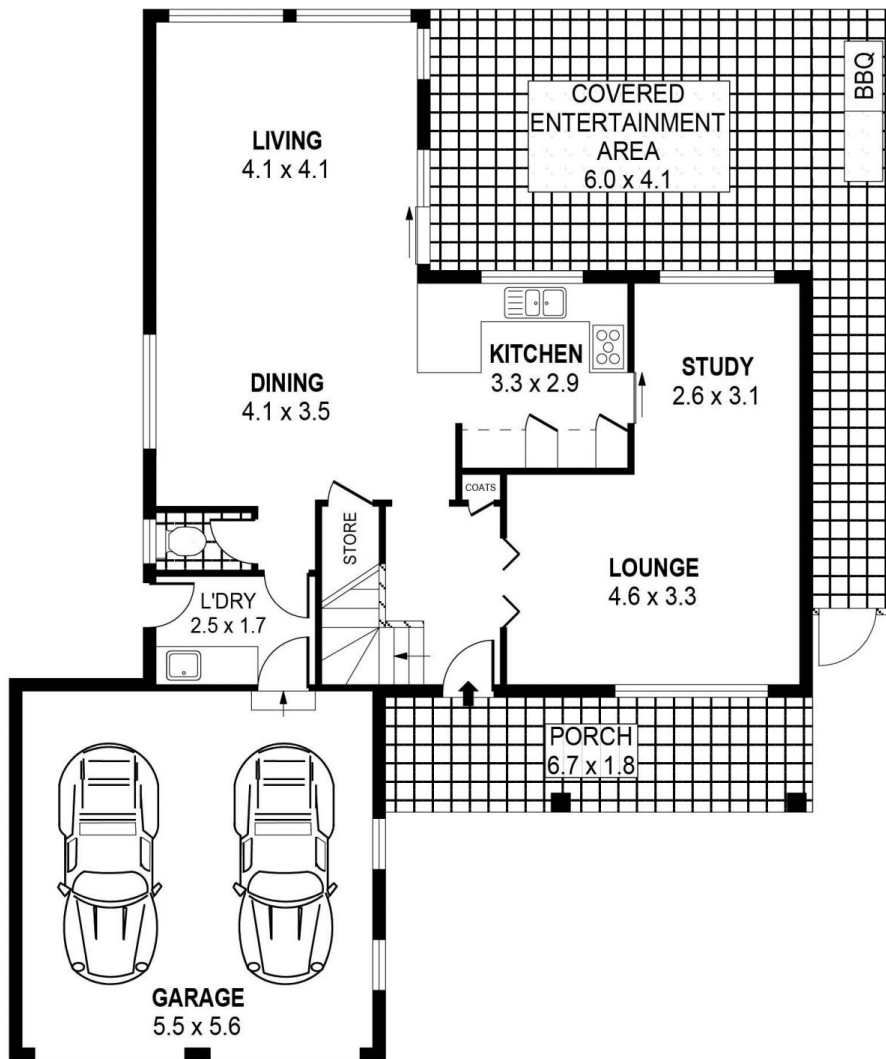
Offering multiple living areas, good sized bedrooms with built in wardrobes - main with walk in robe & ensuite, floating laminate floors, stylish main bathroom, modern laundry cabinetry, quality quantum quartz stone kitchen with Smeg & Miele appliances and shaker style cabinetry, separate study nook for those working or studying from home, ducted air conditioning upstairs with a split system

Type : House
Price : \$ 990,000
Building Size : 22 sqm
Land Size : 500.6 sqm
View : <https://www.mcneice.com.au/8482960>

[For full version visit the website](https://www.mcneice.com.au)



UPPER LEVEL



GROUND LEVEL

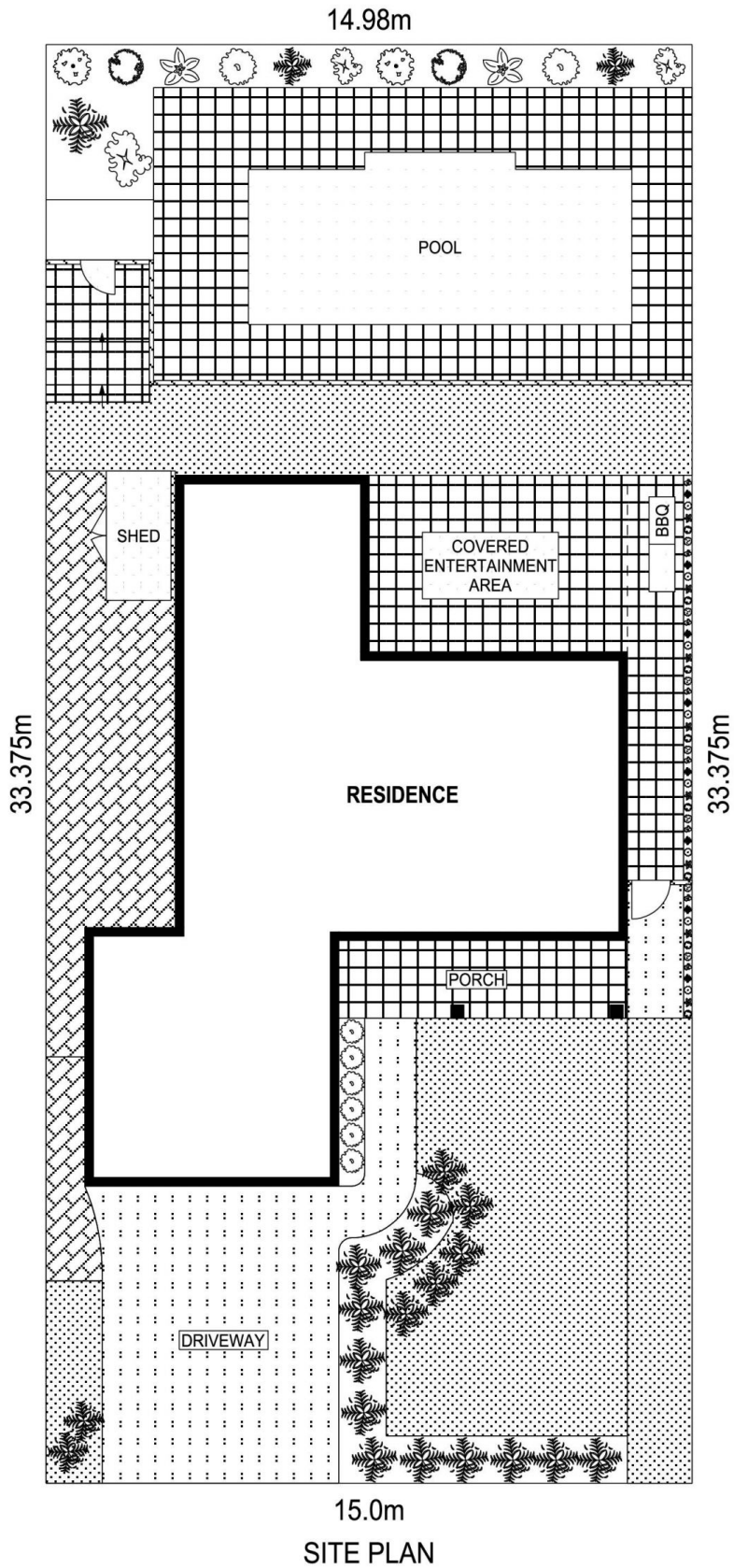


PLANS SHOWN ONLY INDICATIVE OF LAYOUT. DIMENSIONS ARE APPROXIMATE.
Ref. No: 104440

INT : 147m²
EXT : 37m²
GARAGE : 31m²

3 RIVERPARK WAY

HORSLEY



SCALE (METRES)

PLANS SHOWN ONLY INDICATIVE OF LAYOUT. DIMENSIONS ARE APPROXIMATE.
Ref. No: 104440

3 RIVERPARK WAY

HORSLEY