



## 25 Madoline Street Gwynneville NSW

3 1 2

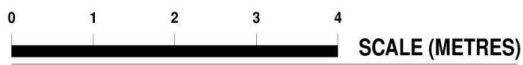
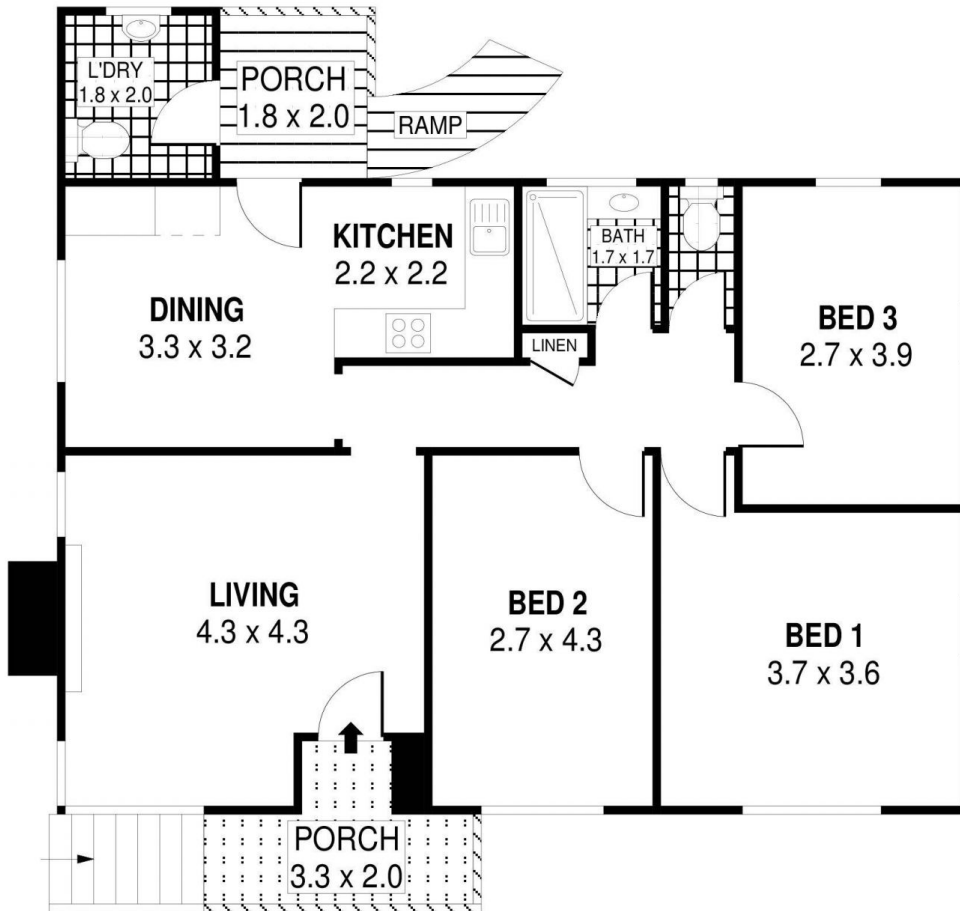
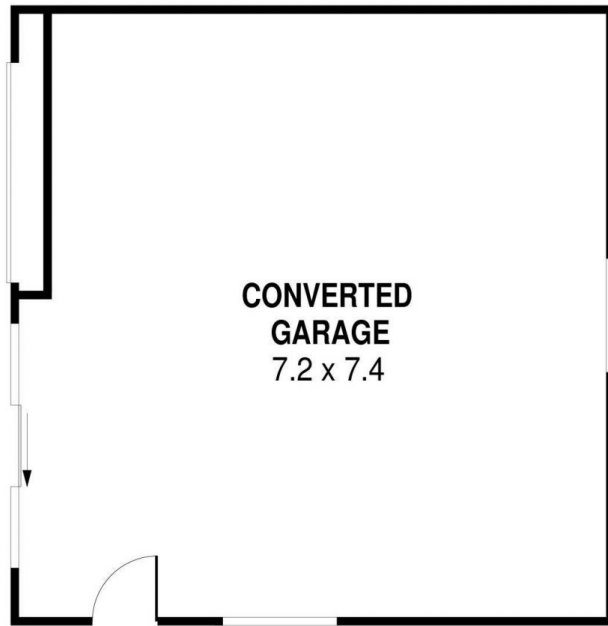
Welcome to 25 Madoline Street Gwynneville, this is one opportunity not to be overlooked. Set on a commanding 664m2 corner block in one of Gwynneville's in demand streets. This home is set in a quiet yet central location handy to everything and all within easy access to the University of Wollongong & the CBD.

**Type** : House  
**Land Size** : 664 sqm  
**View** : <https://www.mcneice.com.au/8482958>

### The Main Features:

- 3 spacious bedrooms all with high ceilings
- Open kitchen and dining area backing onto the rear deck
- Massive double garage
- Huge 664m2 corner block with loads of potential and enough room for the kids to run around

[For full version visit the website](#)

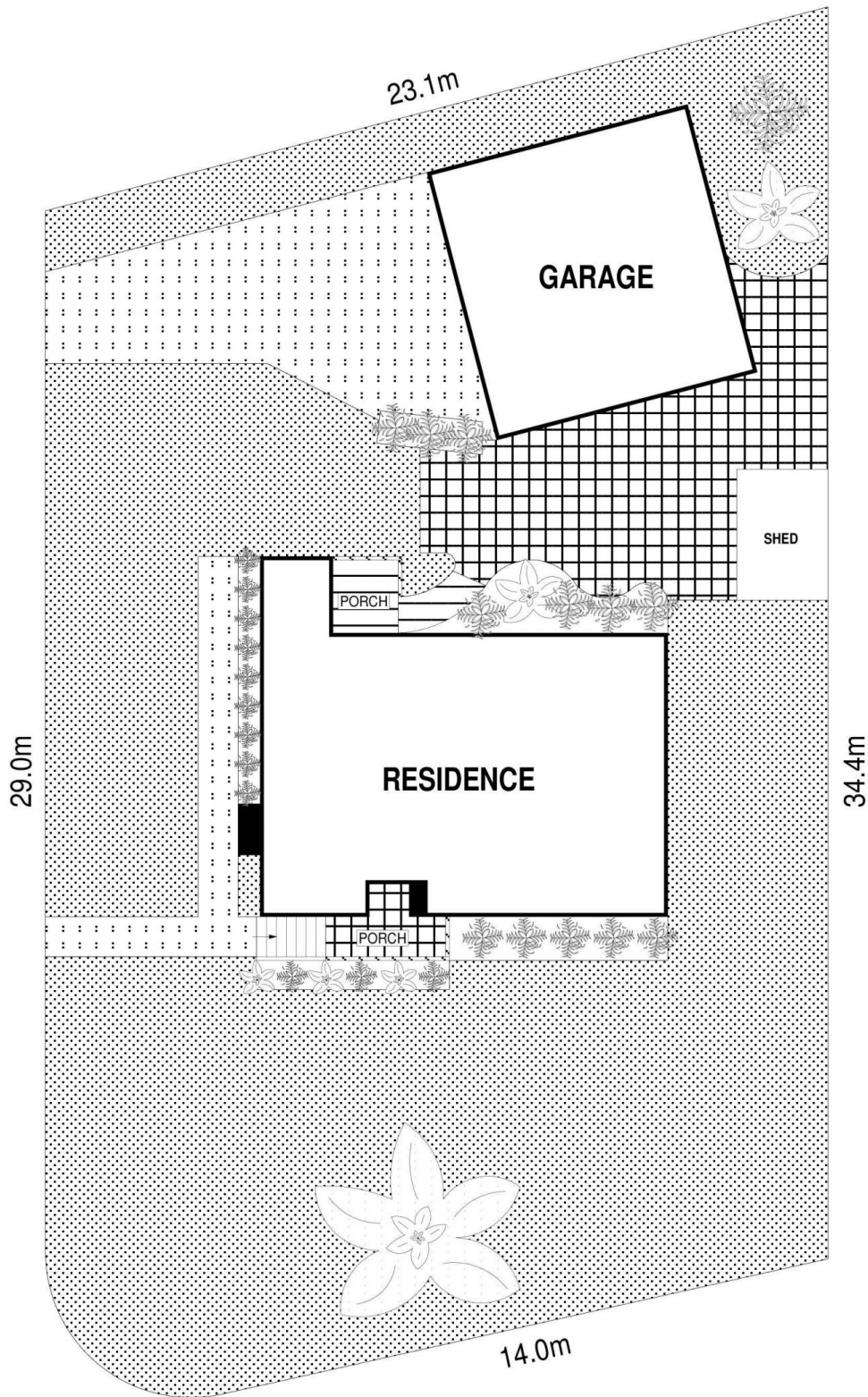


PLANS SHOWN ONLY INDICATIVE OF LAYOUT. DIMENSIONS ARE APPROXIMATE.  
Ref. No: 100714

INT : 86m<sup>2</sup>  
EXT : 9m<sup>2</sup>  
GARAGE : 53m<sup>2</sup>

25 MADOLINE STREET

GWYNNEVILLE



SITE PLAN



SCALE (METRES)

PLANS SHOWN ONLY INDICATIVE OF LAYOUT. DIMENSIONS ARE APPROXIMATE.  
Ref. No: 100714

25 MADOLINE STREET

GWYNNEVILLE