



3 Woodbury Place Mount Keira NSW

5 3 2

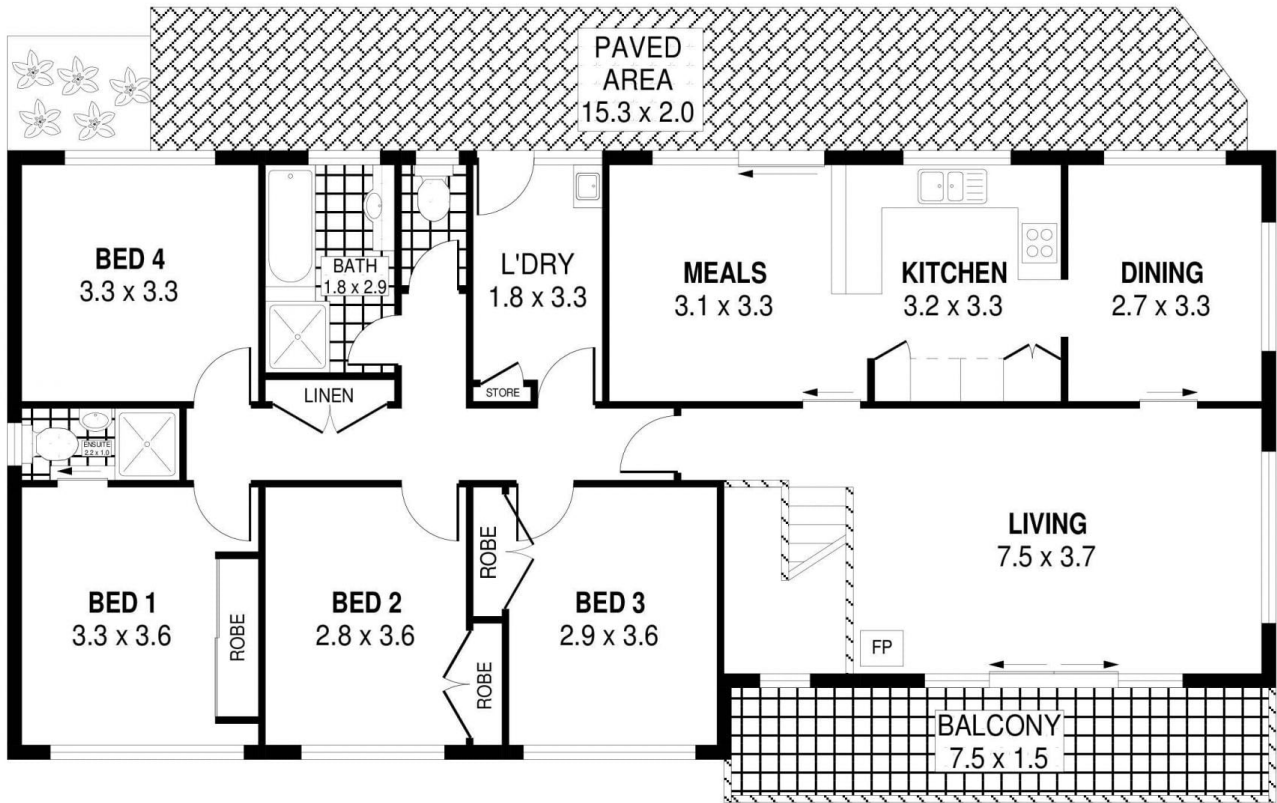
Peacefully tucked away in a quiet, cul-de-sac position in the highly sought after & exclusive pocket of Mount Keira, is this spacious 5-bedroom family home, which is ideal for when size matters.

The practical & versatile floor plan caters to larger families or those looking for additional accommodation for guests, teenagers, parents or in-laws, with a fully self-contained rumpus area downstairs which includes a fully functioning kitchen, the 5th bedroom with ensuite & a generous sized storage / utility room.

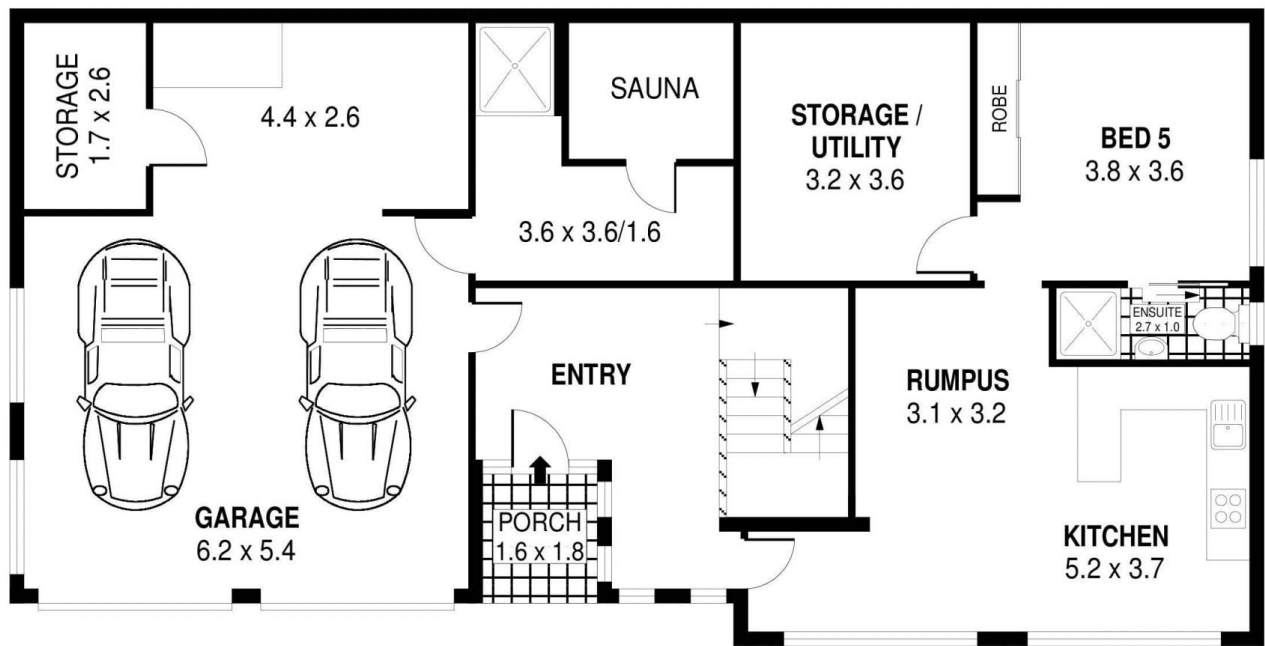
Offering good sized bedrooms with built in wardrobes in 4 of them, 3 neat bathrooms with a 4th shower in the

[For full version visit the website](https://www.mcneice.com.au/8482950)

Type : House
Price : \$ 1,050,000
Land Size : 688.1 sqm
View : <https://www.mcneice.com.au/8482950>



UPPER LEVEL



GROUND LEVEL

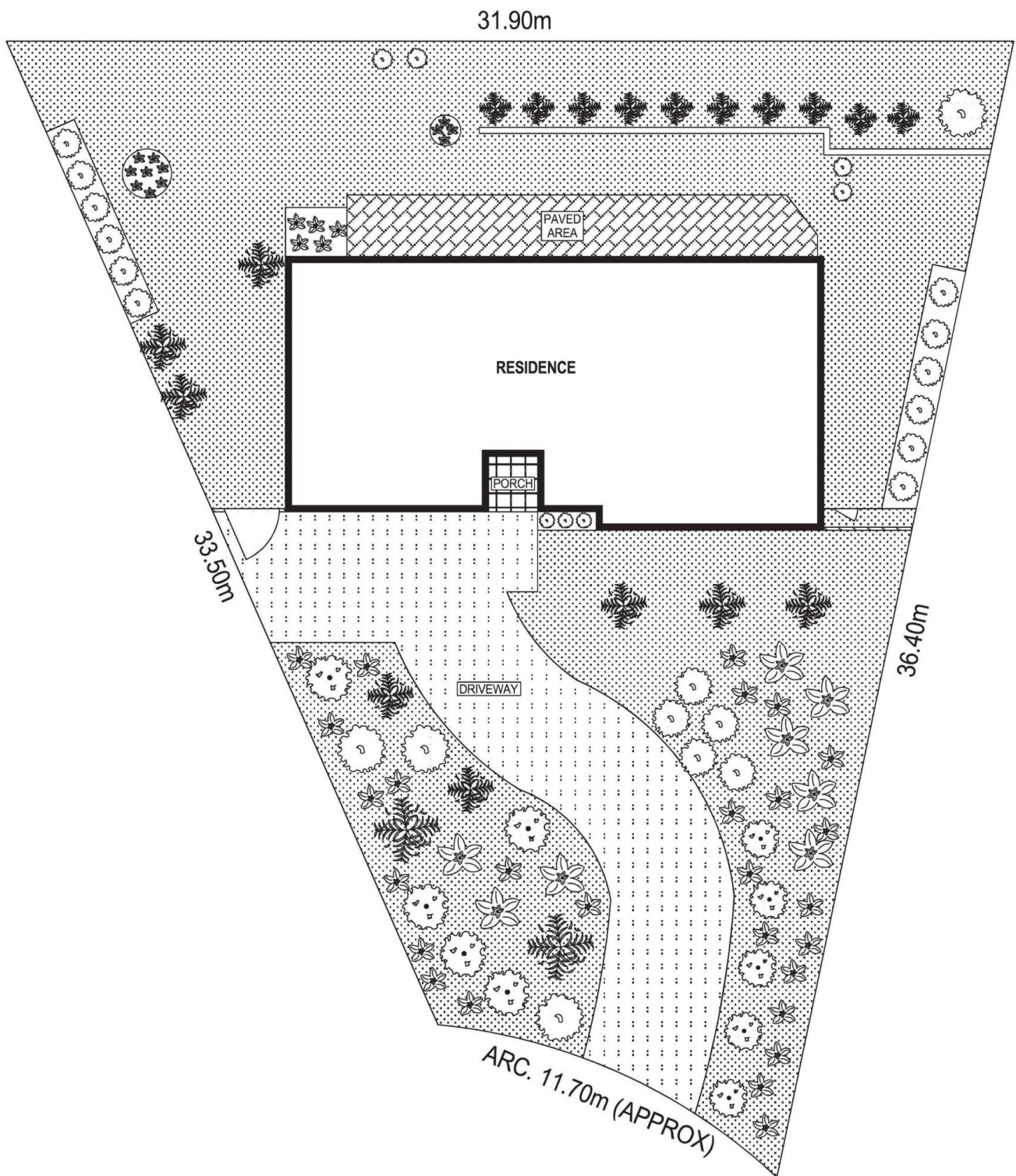


PLANS SHOWN ONLY INDICATIVE OF LAYOUT. DIMENSIONS ARE APPROXIMATE.
Ref. No: 102201

INT : 235m²
EXT : 44m²
GARAGE : 33m²

3 WOODBURY PLACE

MOUNT KEIRA



SITE PLAN



SCALE (METRES)

PLANS SHOWN ONLY INDICATIVE OF LAYOUT. DIMENSIONS ARE APPROXIMATE.
 Ref. No: 102201

3 WOODBURY PLACE

MOUNT KEIRA