



## 86 Laver Road Dapto NSW

4 2 1

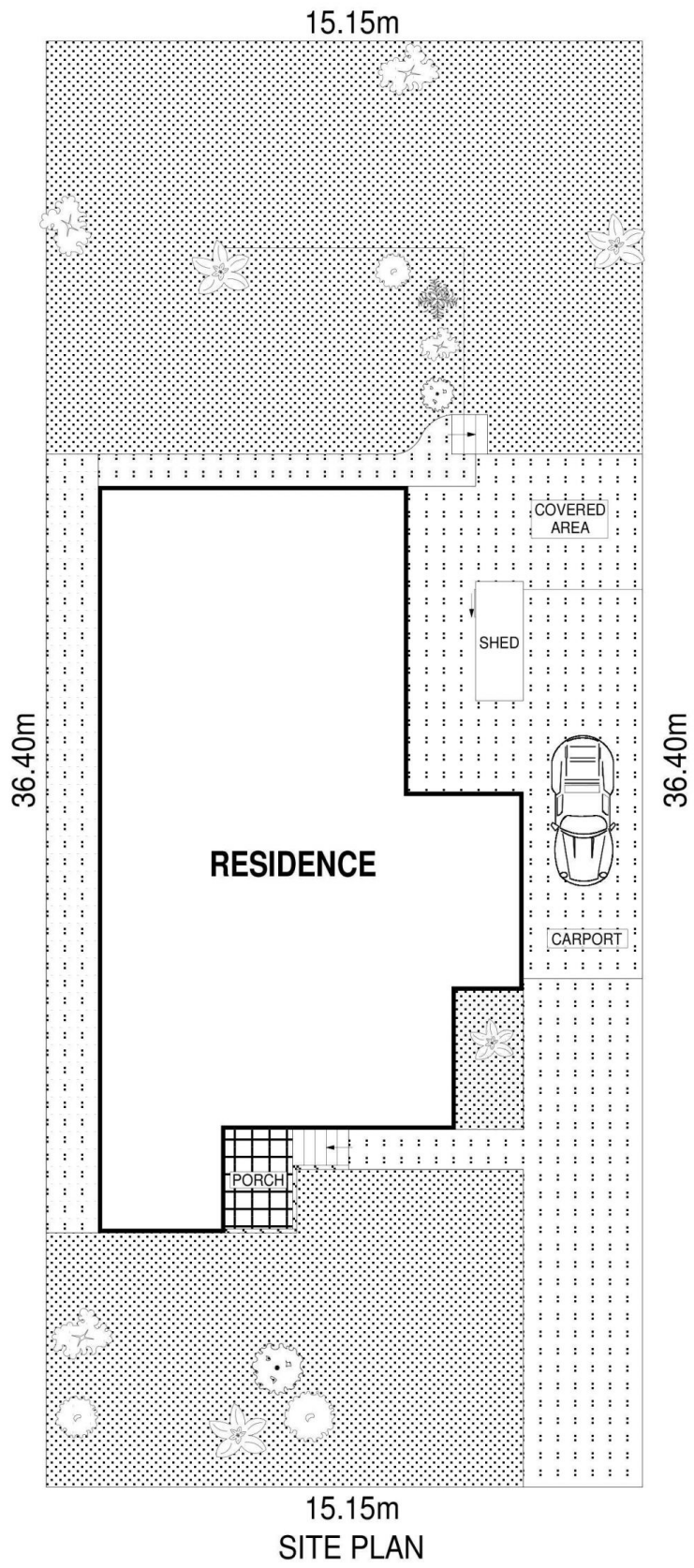
Spread over a 556m<sup>2</sup> block, in an elevated & convenient position, is this spacious 4 bedroom weatherboard home which offers plenty of space for the growing family.

The convenient access to Dapto CBD shops, local schools, the M1 motorway, sporting facilities & other essential amenities makes this home the ideal location.

Offering good sized bedrooms, built in wardrobes in 2 bedrooms & a walk in robe and ensuite off the main bed, renovated main bathroom, neat kitchen, 2 separate living areas, a good sized backyard for the kids and a lock up carport to top it off.

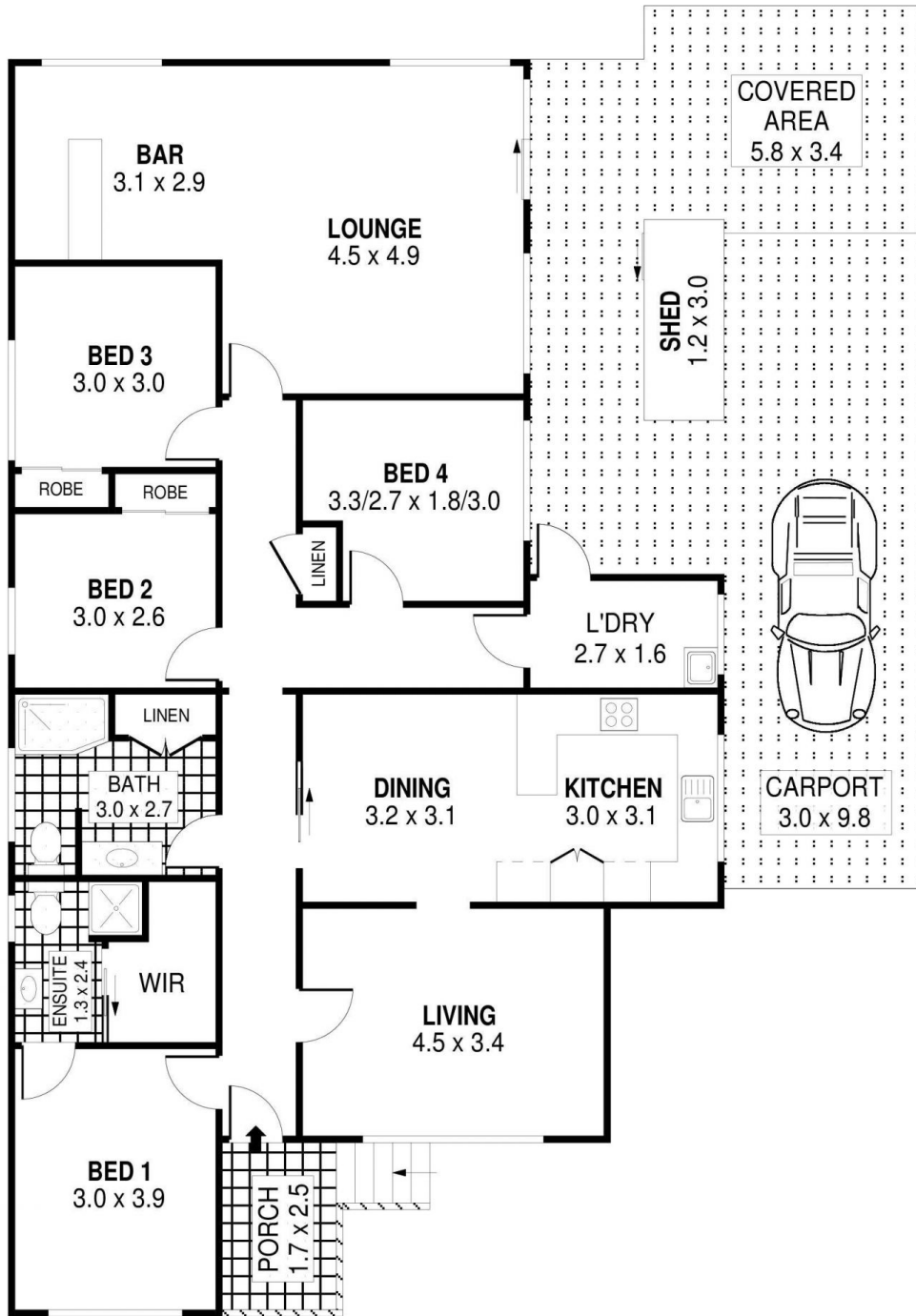
**Type** : House  
**Land Size** : 556 sqm  
**View** : <https://www.mcneice.com.au/8482949>

[For full version visit the website](https://www.mcneice.com.au)



SCALE (METRES)

PLANS SHOWN ONLY INDICATIVE OF LAYOUT. DIMENSIONS ARE APPROXIMATE.  
 Ref. No: 100408



PLANS SHOWN ONLY INDICATIVE OF LAYOUT. DIMENSIONS ARE APPROXIMATE.  
 Ref. No: 100408

INT	: 148m <sup>2</sup>
EXT	: 43m <sup>2</sup>
CARPORT	: 23m <sup>2</sup>

86 LAVER ROAD

DAPTO