



## 46 Essex Street Berkeley NSW

3  1 

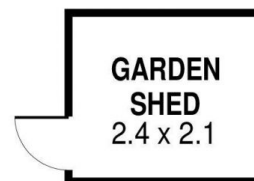
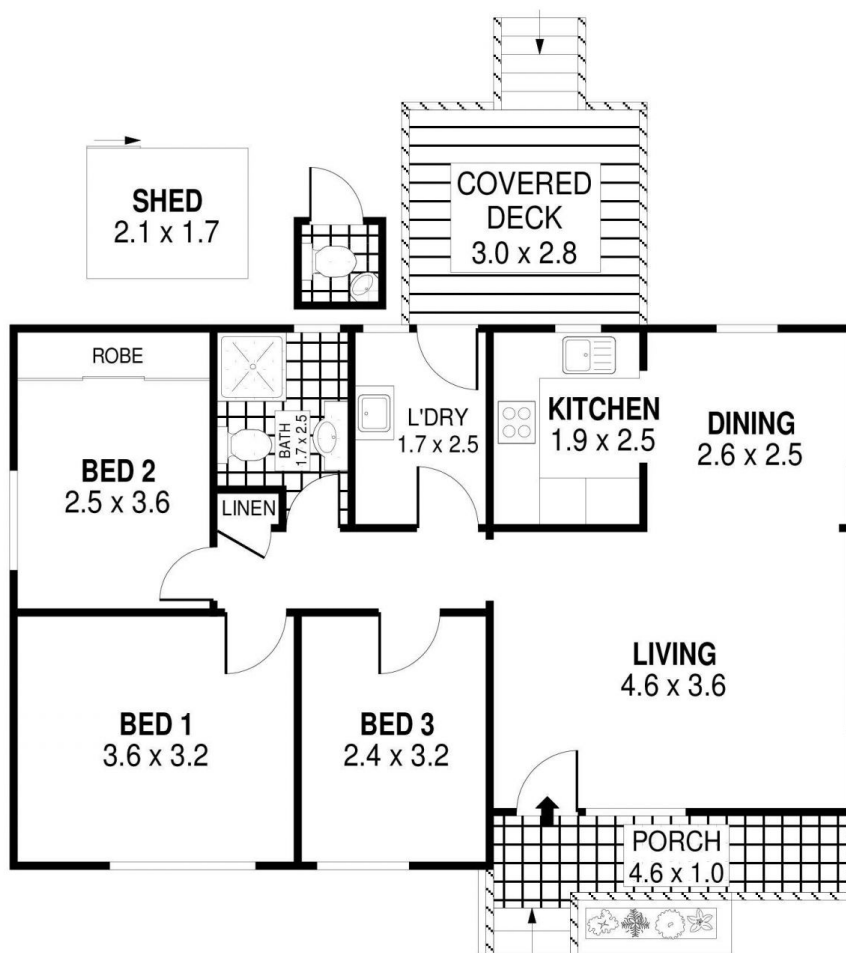
When they talk about The Great Australian Dream, it involves a beautiful cottage on a large block of land. 46 Essex Street Berkeley is exactly that. A neat and tidy home on a 657m<sup>2</sup> level block with loads of potential.

**Type** : House  
**Building Size** : 11 sqm  
**Land Size** : 658 sqm  
**View** : <https://www.mcneice.com.au/8482946>

### The Main Features:

- 3 spacious bedrooms all carpeted and one with a large built-in wardrobe
- Neat kitchen with gas stove, well utilised cupboard space & tiled splashback
- Modern fully tiled bathroom, near new condition
- Massive lounge room with an easterly aspect, perfect for the morning sun

[For full version visit the website](#)



DETACHED



DETACHED

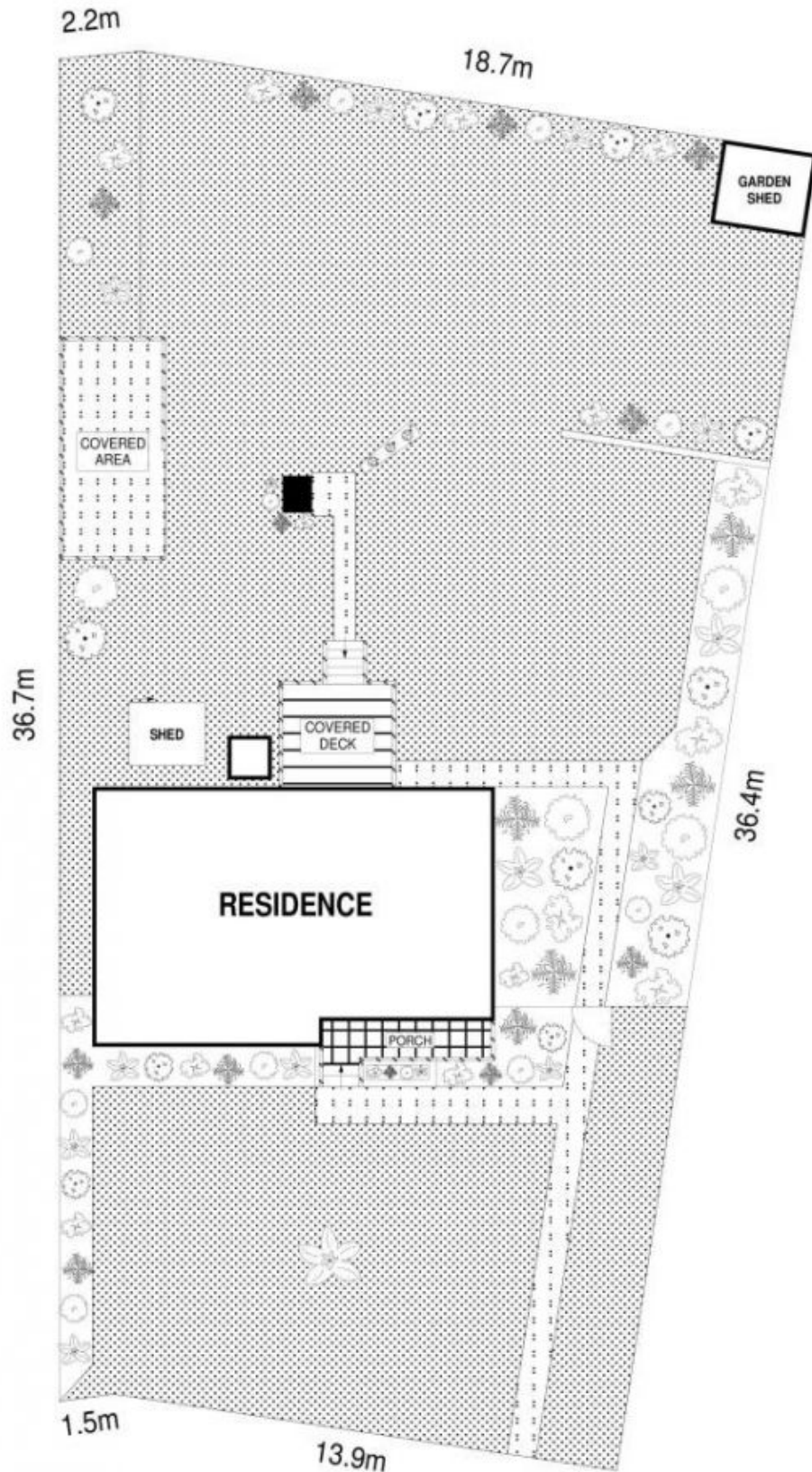


PLANS SHOWN ONLY INDICATIVE OF LAYOUT. DIMENSIONS ARE APPROXIMATE.  
Ref. No: 99324

INT	: 71m <sup>2</sup>
EXT	: 13m <sup>2</sup>
GARDEN SHED	: 5m <sup>2</sup>
SHED	: 4m <sup>2</sup>
COVERED AREA	: 16m <sup>2</sup>

46 ESSEX STREET

BERKELEY



SITE PLAN



SCALE (METRES)

PLANS SHOWN ONLY INDICATIVE OF LAYOUT. DIMENSIONS ARE APPROXIMATE.  
 Ref. No: 95324