



42 Cygnet Avenue Blackbutt NSW

3  1  2 

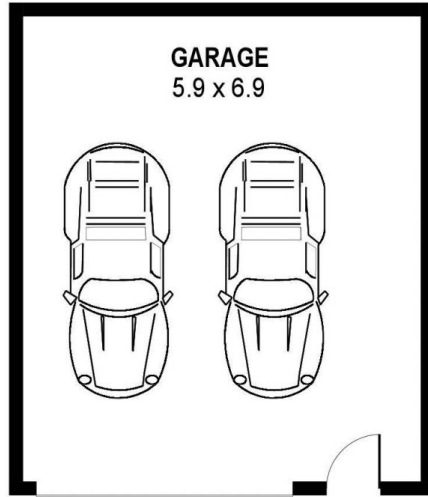
When it comes to your first home this one ticks all the boxes. From the single level low maintenance aspect of the home, matched with the huge detached garage and then add the location being so central to the Shellharbour CBD, it really doesn't get any better than this!

Type : House
Building Size : 14 sqm
Land Size : 537 sqm
View : <https://www.mcneice.com.au/8482939>

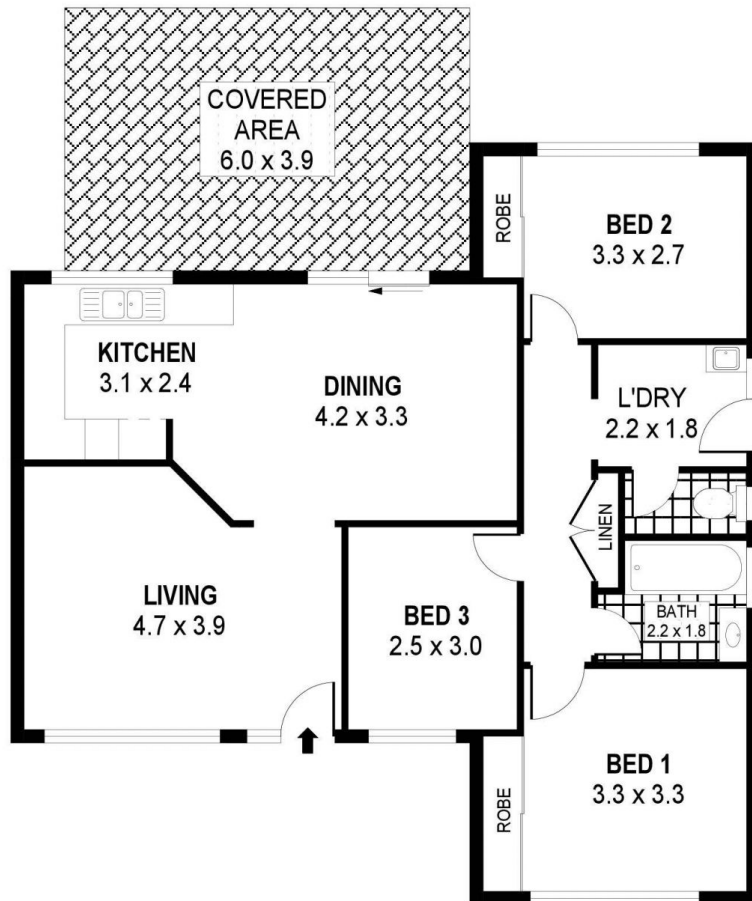
The Main Features:

- 3 spacious bedrooms, 2 with built in wardrobes
- Large open lounge room with neat timber floors throughout
- Near new kitchen & meals area with electric appliances
- Modern fully-tiled bathroom with shower over bath
- 3 split system reverse cycle air conditioners

[For full version visit the website](#)



DETACHED

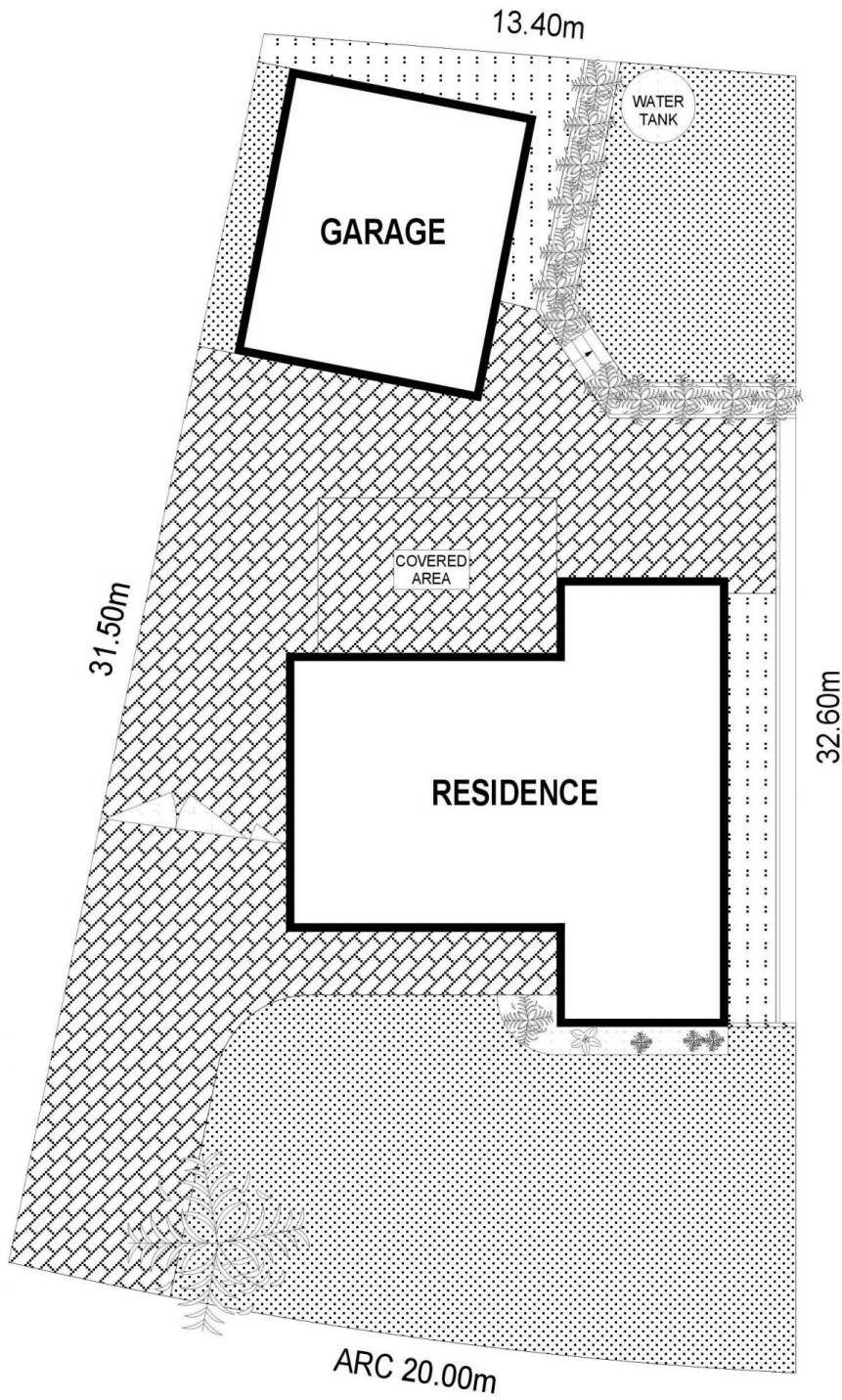


PLANS SHOWN ONLY INDICATIVE OF LAYOUT. DIMENSIONS ARE APPROXIMATE.
Ref. No: 99304

INT : 87m²
EXT : 23m²
GARAGE : 41m²

42 CYGNET AVENUE

BLACKBUTT



SITE PLAN



SCALE (METRES)

PLANS SHOWN ONLY INDICATIVE OF LAYOUT. DIMENSIONS ARE APPROXIMATE.
 Ref. No: 99304