



## 48 Burke Road Dapto NSW

3 2 1

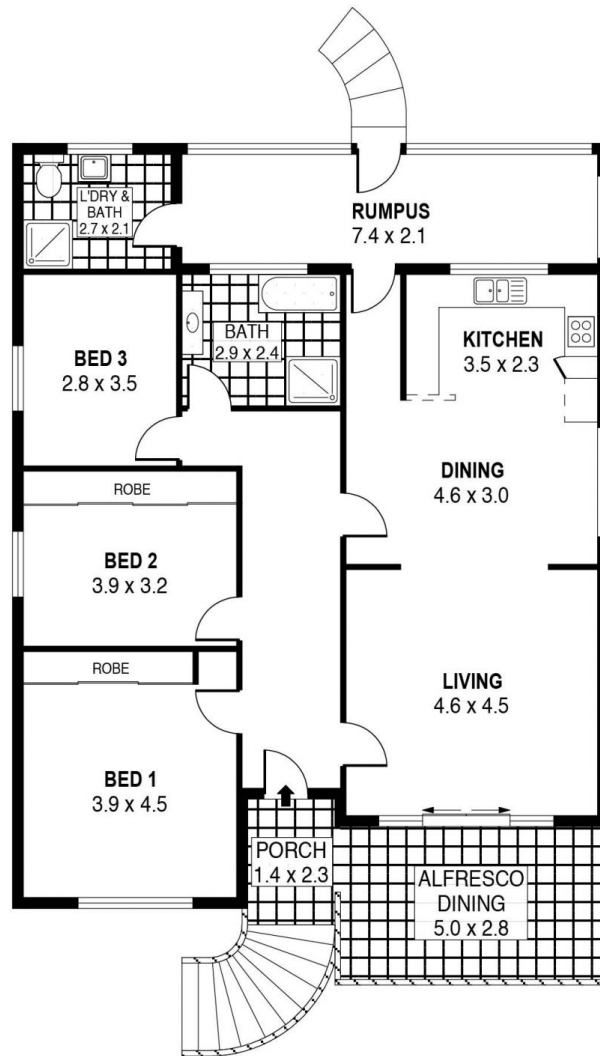
An incredible home boasting space, character and charm, 48 Burke Road Dapto is second to none. With some original features including the high ceilings with original crown moulding, in addition the modern touch with surprising kerbside aspect, you must visually inspect to truly appreciate the home. The double brick home isn't only unique inside, externally the side access unlocks loads of future potential for the growing family & those that need the space.

**Type** : House  
**Building Size** : 18 sqm  
**Land Size** : 581.7 sqm  
**View** : <https://www.mcneice.com.au/8482933>

### The Main Features:

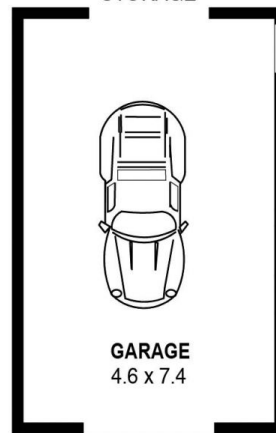
- 3 oversized bedrooms off the traditional wide hallway
- Large east facing living area opening onto the front porch

[For full version visit the website](#)



GROUND LEVEL

UNDER HOUSE STORAGE



LOWER LEVEL



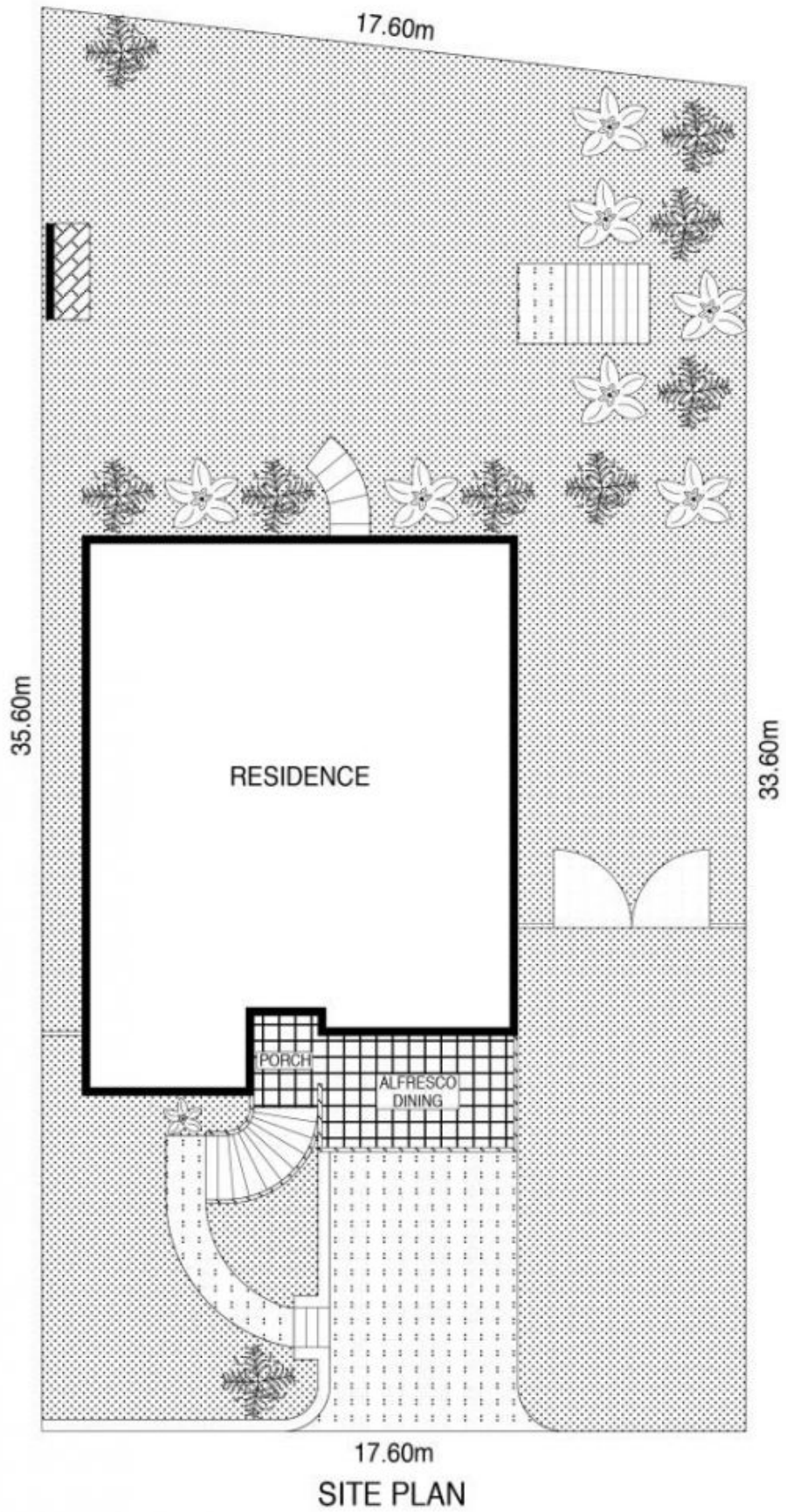
SCALE (METRES)

PLANS SHOWN ONLY INDICATIVE OF LAYOUT. DIMENSIONS ARE APPROXIMATE.  
Ref. No: 94001

INT	: 132m <sup>2</sup>
EXT	: 17m <sup>2</sup>
GARAGE	: 34m <sup>2</sup>

48 BURKE ROAD

DAPTO



PLANS SHOWN ONLY INDICATIVE OF LAYOUT. DIMENSIONS ARE APPROXIMATE.  
 Ref. No. 94001

48 BURKE ROAD

DAPTO