



## 40 Coronet Place Dapto NSW

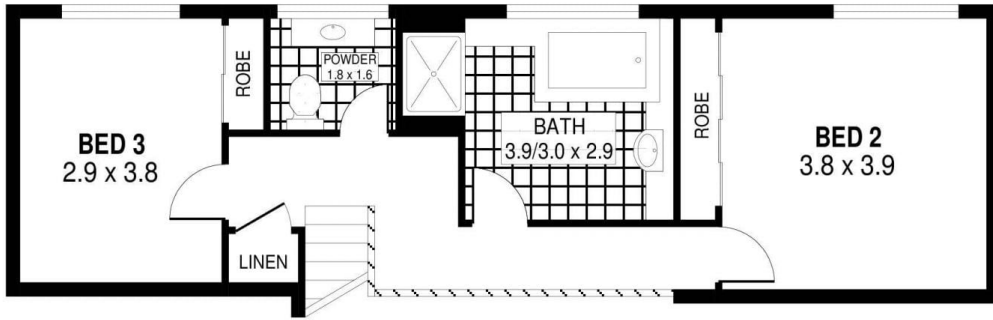
4 2 2

Quietly tucked away in a peaceful cul-de-sac street with a stunning escarpment backdrop & spread over a large, sloping 1,852m<sup>2</sup> block with plenty of usable yard, is this sunny northeast facing, 4 bedroom, split level family home, which will suit larger families looking for space.

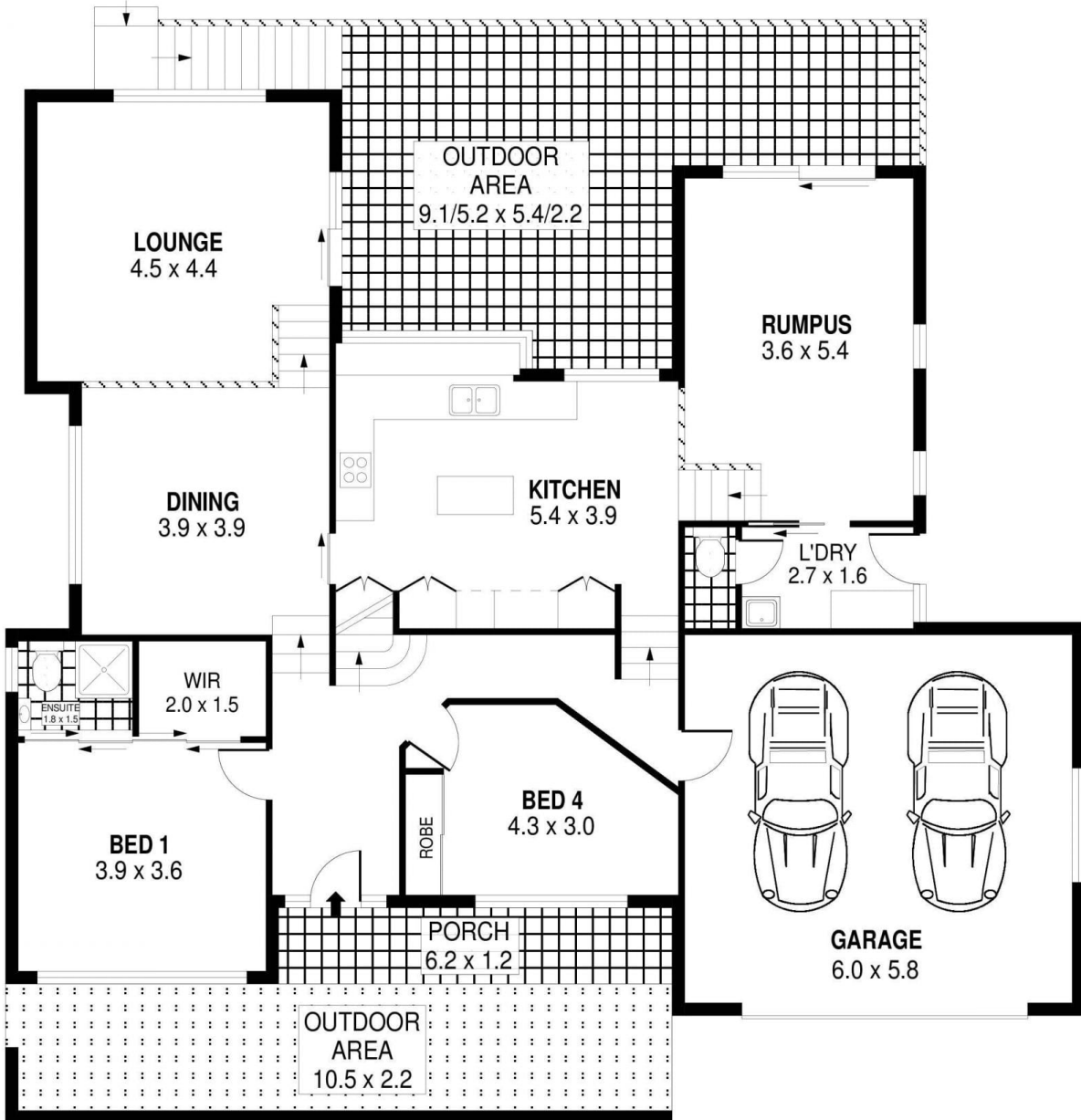
Offering great energy efficiency with the 5.2kW solar panel system installed, multiple separate spacious living areas, renovated polyurethane kitchen with 20mm Caesarstone benchtops, good sized bedrooms with built in wardrobes main with ensuite & walk in robe, large outdoor entertaining area overlooking the escarpment views, neat main bathroom, reverse cycle split system air conditioning, loads of under house storage and a double lock up garage to top

**Type** : House  
**Price** : \$ 940,000  
**Building Size** : 24 sqm  
**Land Size** : 1852 sqm  
**View** : <https://www.mcneice.com.au/8482930>

[For full version visit the website](#)



UPPER LEVEL

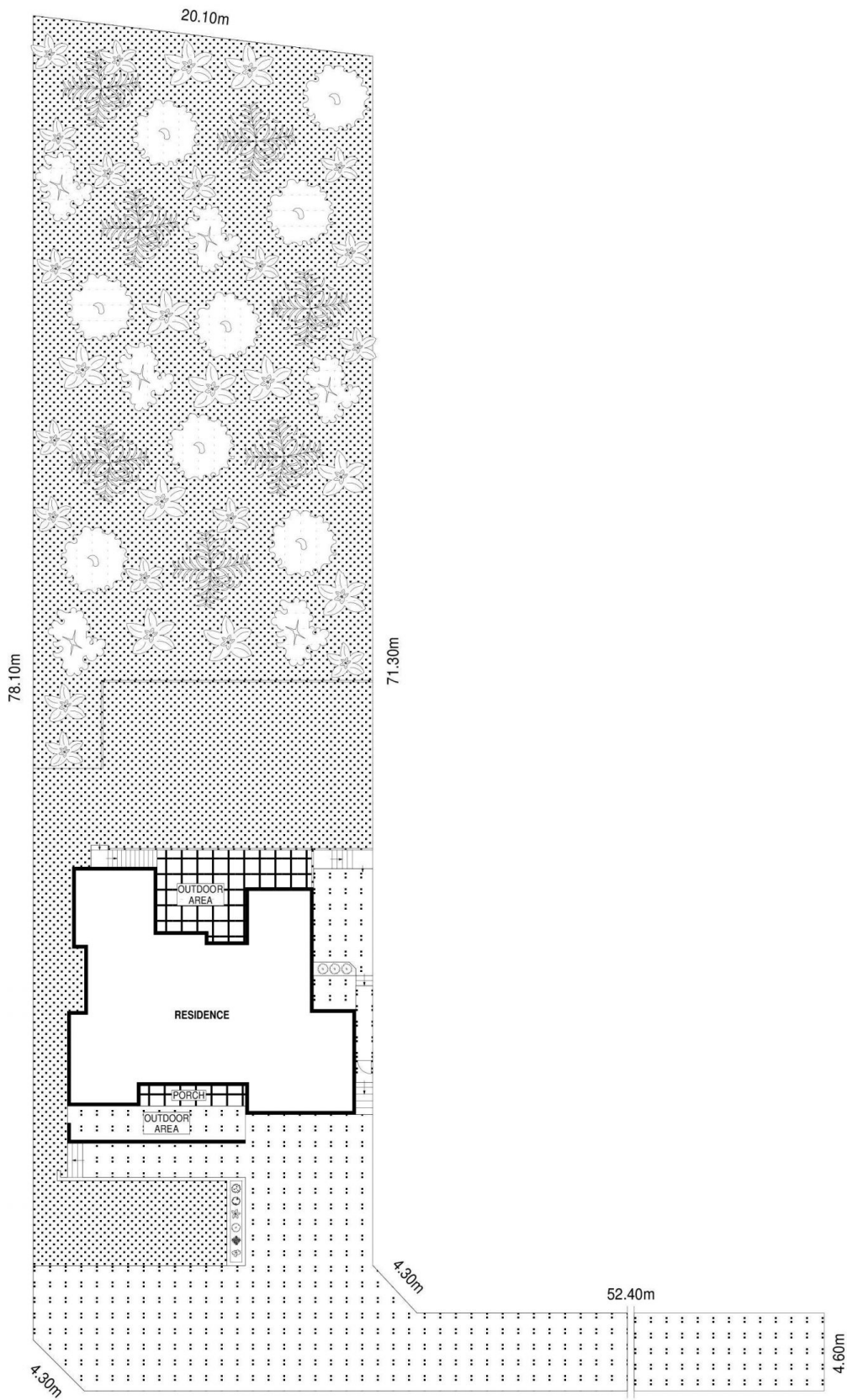


GROUND LEVEL



PLANS SHOWN ONLY INDICATIVE OF LAYOUT. DIMENSIONS ARE APPROXIMATE.  
 Ref. No: 98353

INT : 185m<sup>2</sup>  
 EXT : 65m<sup>2</sup>  
 GARAGE : 35m<sup>2</sup>



72.0m  
SITE PLAN

SCALE (METRES)



PLANS SHOWN ONLY INDICATIVE OF LAYOUT. DIMENSIONS ARE APPROXIMATE.  
Ref. No: 98353