



50B Brooks Terrace Kanahooka NSW

4 3 1

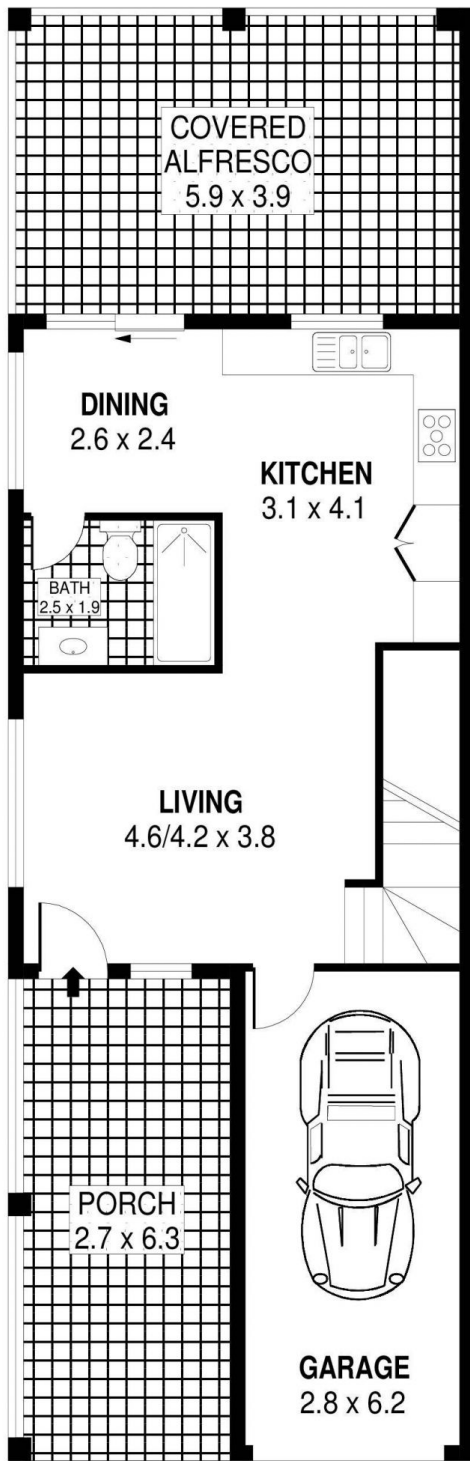
Set across two levels this home has more than meets the eye. With 3 bathrooms, 2 outdoor entertaining space and a very practical design, this one will be suit any first home owner or those looking to enter the Brooks Terrace Estate.

Type : House
Building Size : 15 sqm
Land Size : 262 sqm
View : <https://www.mcneice.com.au/8482929>

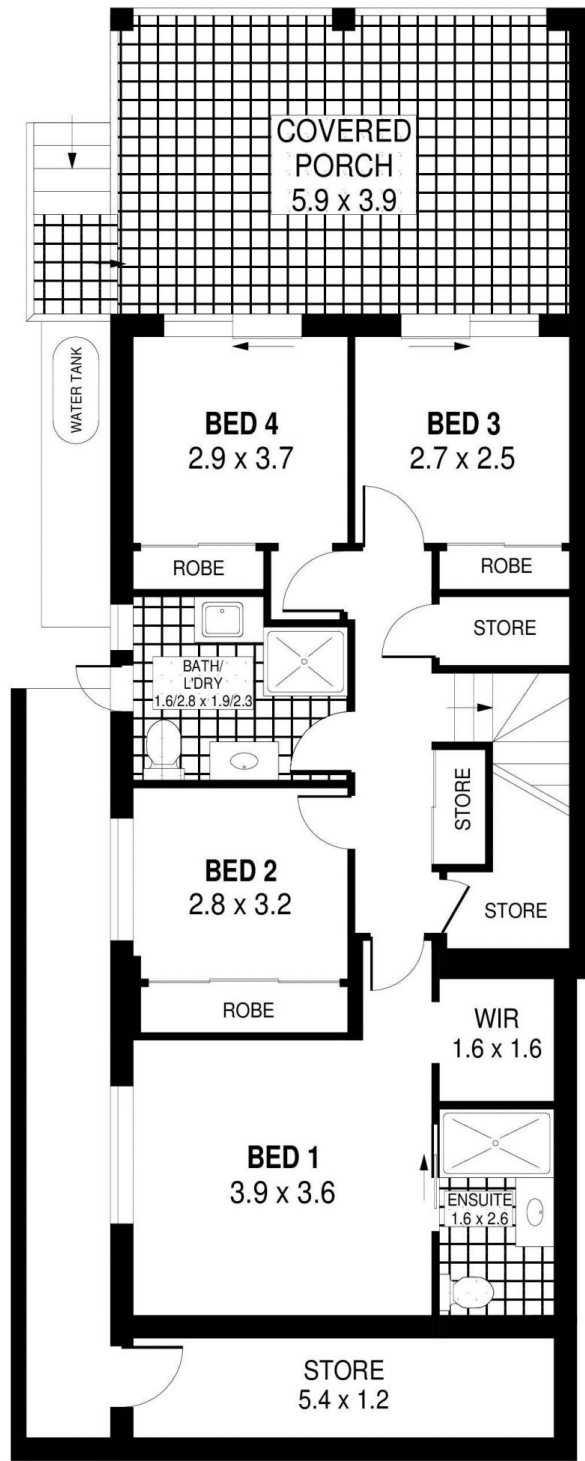
The Main Features:

- 4 spacious bedrooms all with built in robes and main with large ensuite & walk in robe
- Practical design with all bedrooms on the lower level with the remaining living, kitchen, dining, garage and additional bathroom on the upper level
- Large open plan kitchen and meals area with top easterly aspect

[For full version visit the website](https://www.mcneice.com.au)



GROUND LEVEL

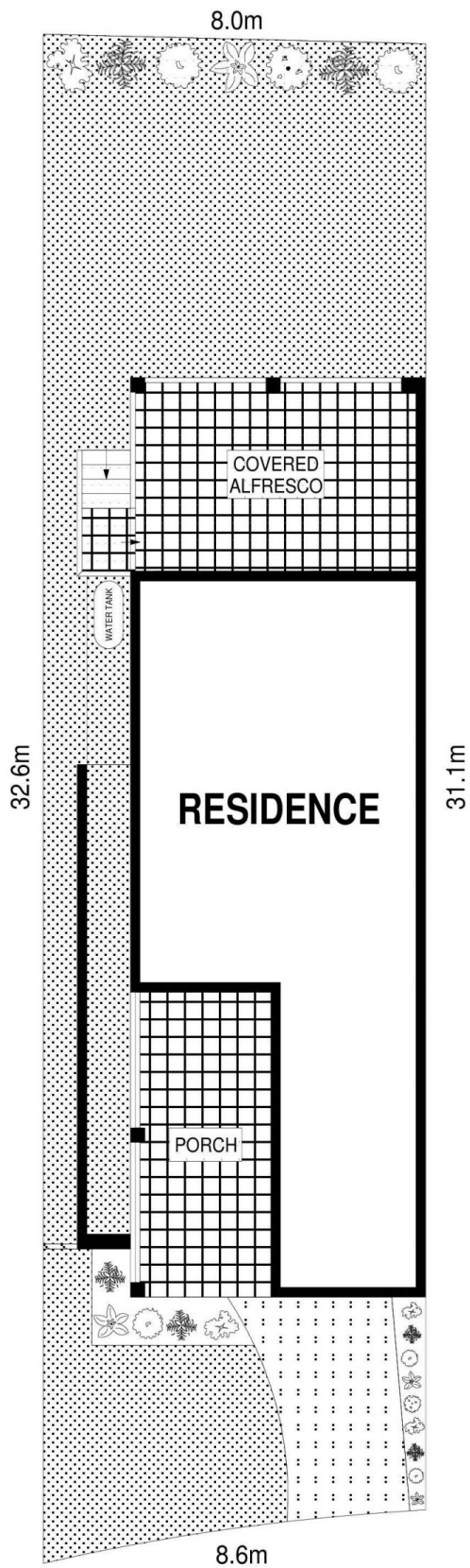


LOWER GROUND LEVEL



PLANS SHOWN ONLY INDICATIVE OF LAYOUT. DIMENSIONS ARE APPROXIMATE.
Ref. No: 97709

INT : 119m²
EXT : 81m²
GARAGE : 17m²



SITE PLAN



SCALE (METRES)

PLANS SHOWN ONLY INDICATIVE OF LAYOUT. DIMENSIONS ARE APPROXIMATE.
Ref. No: 97709