



## 31 Timberi Avenue Dapto NSW

3 1 2

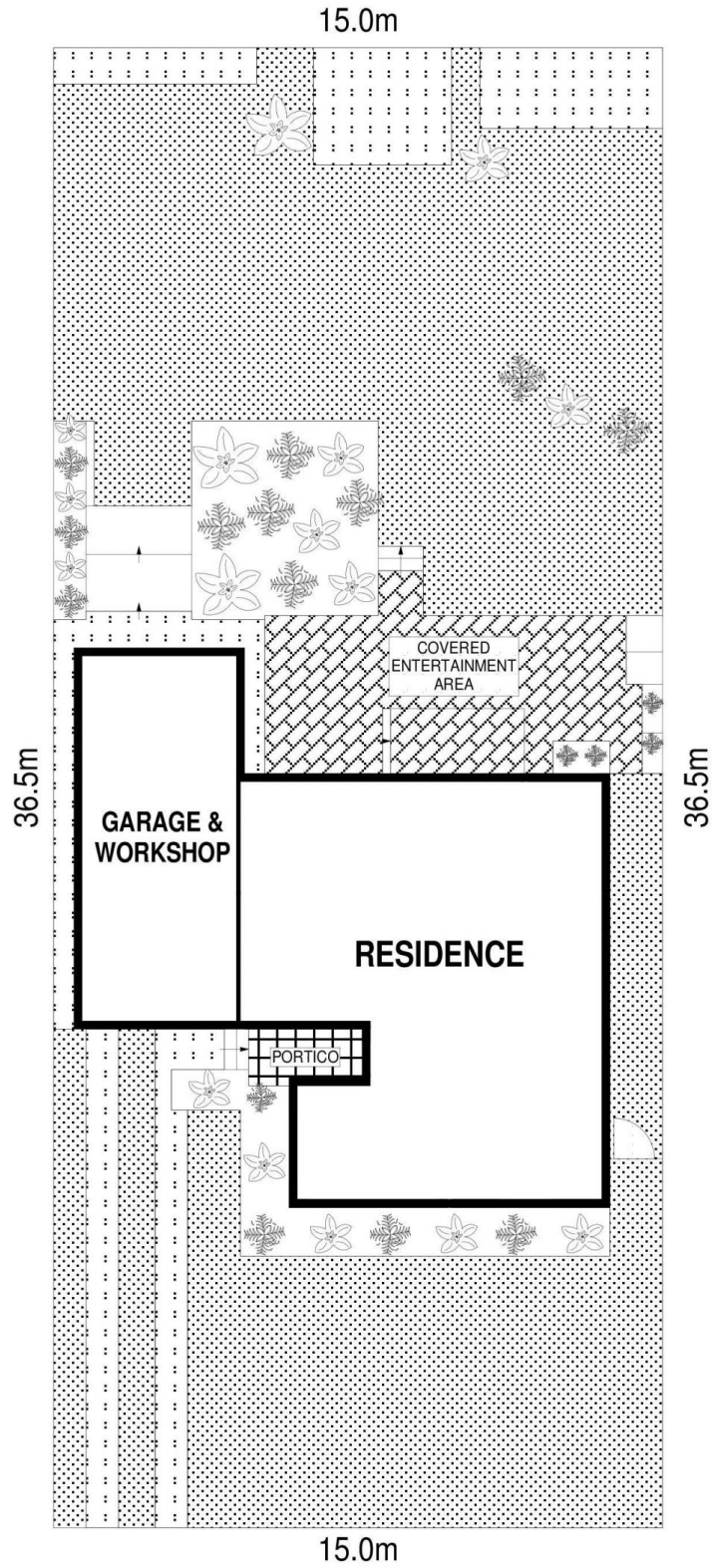
This neat and tidy 3-bedroom brick home is situated in a popular area and is only a short walk to local parks, schools and Dapto CBD. Nestled in a no through street and on top of a large 556 sqm block 31 Timberi Avenue is ideal for a first home buyer or investor alike.

**Type** : House  
**Building Size** : 12 sqm  
**Land Size** : 556 sqm  
**View** : <https://www.mcneice.com.au/8482927>

### The Main Features:

- 3 spacious bedrooms all with new carpet and two with built in robes
- Sizeable loungeroom with timber floor and reverse cycle air conditioning
- Timber kitchen with dishwasher and plenty of cupboard and bench space

[For full version visit the website](#)

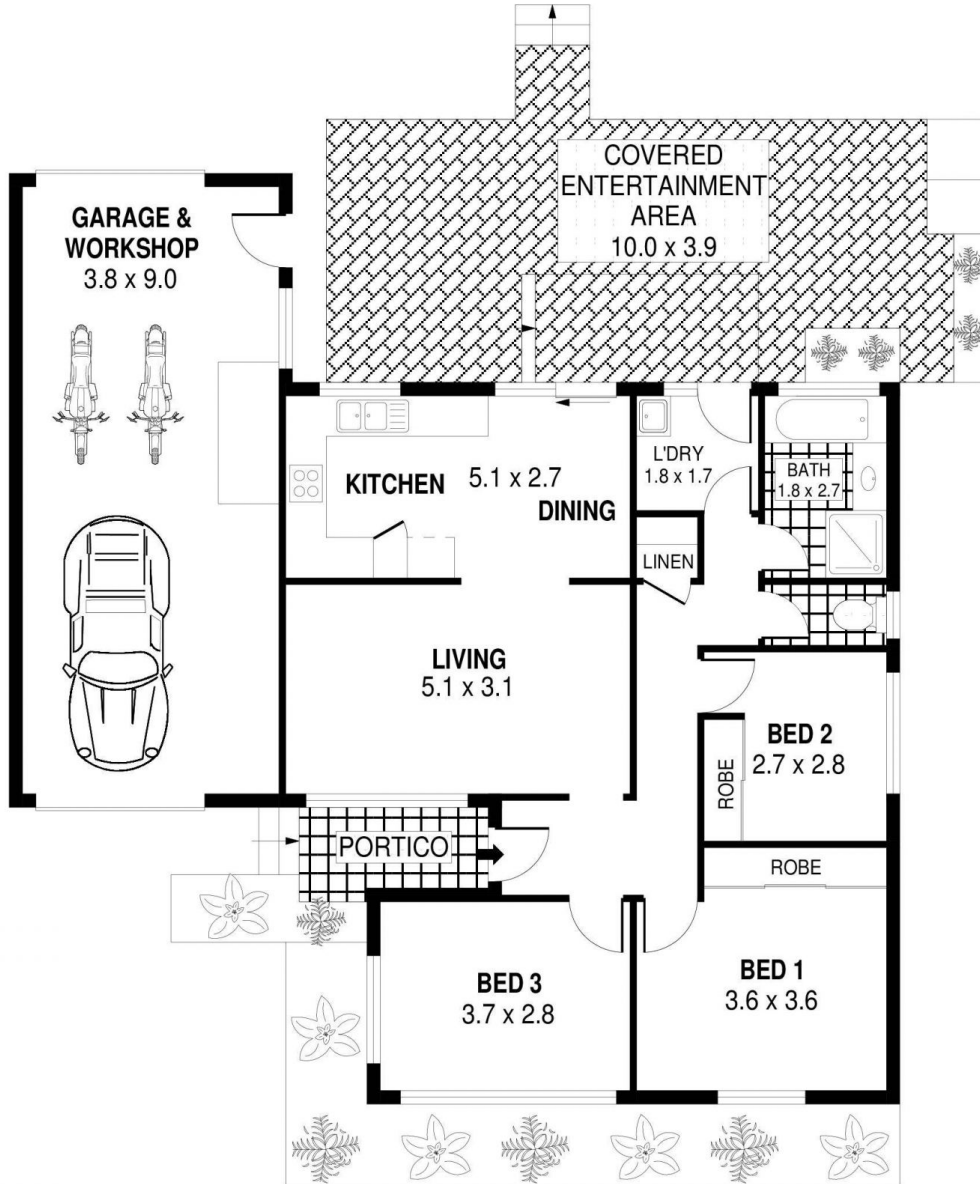


SITE PLAN



SCALE (METRES)

PLANS SHOWN ONLY INDICATIVE OF LAYOUT. DIMENSIONS ARE APPROXIMATE.  
Ref. No: 97316



PLANS SHOWN ONLY INDICATIVE OF LAYOUT. DIMENSIONS ARE APPROXIMATE.  
 Ref. No: 97316

INT : 83m<sup>2</sup>  
 EXT : 39m<sup>2</sup>  
 GARAGE : 34m<sup>2</sup>

31 TIMBERI AVENUE

DAPTO