



6 Siltstone Avenue Horsley NSW

4 2 2

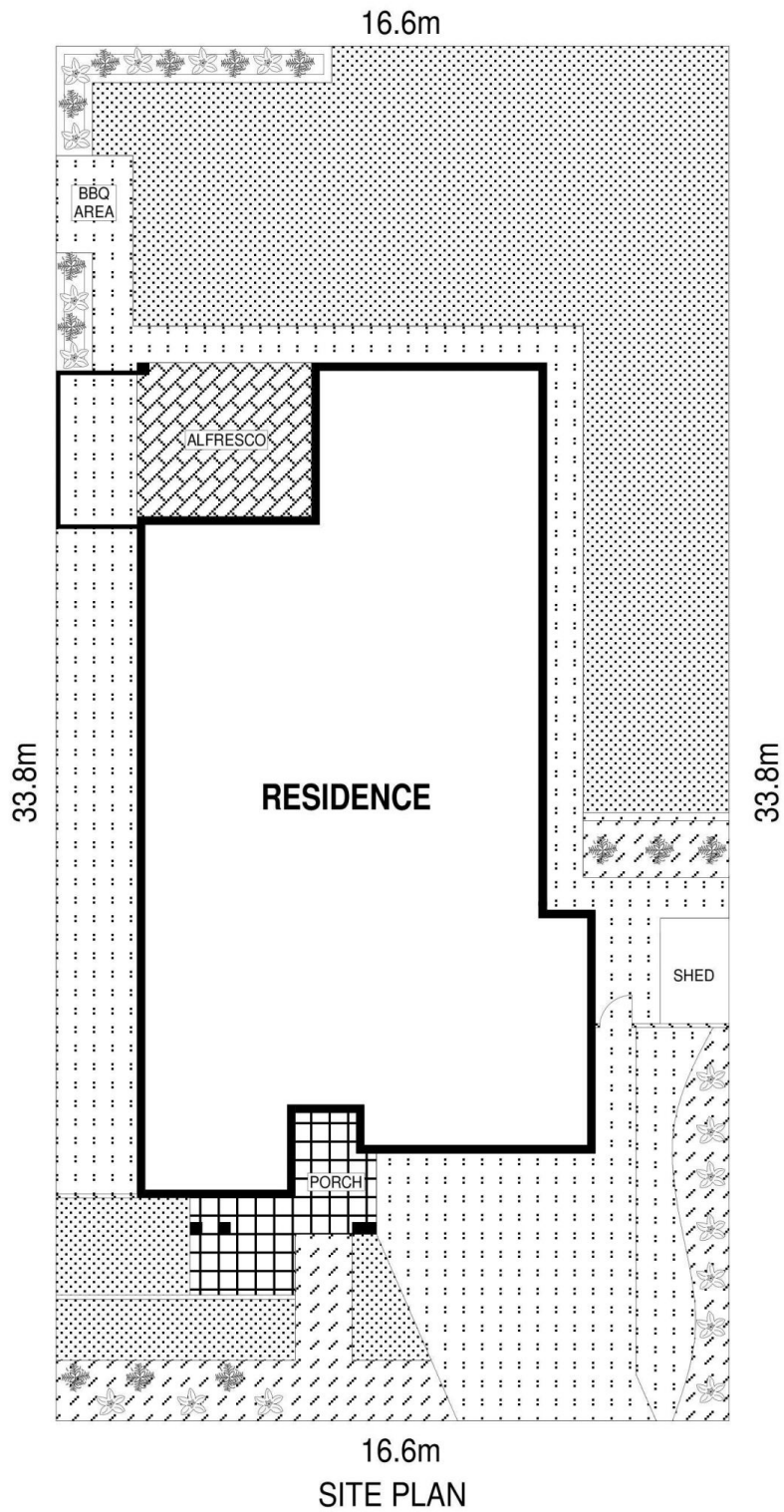
This impressive single level family home showcases the ultimate blend of family living mixed with the ideal layout for those who love to entertain. Conveniently located in the beautiful Brooks Reach Estate, this home boasts 4 generously sized bedrooms, quality neutral finishes, 2 living areas, a huge backyard perfect for the kids along with a spectacular alfresco area perfect for those summer days.

Type : House
Price : \$ 1,030,000
Land Size : 564 sqm
View : <https://www.mcneice.com.au/8482925>

The Main Features:

- Four massive bedrooms all with built in robes, main with walk in robe and ensuite
- Open plan living, kitchen and dining overlooking the big backyard

[For full version visit the website](https://www.mcneice.com.au)

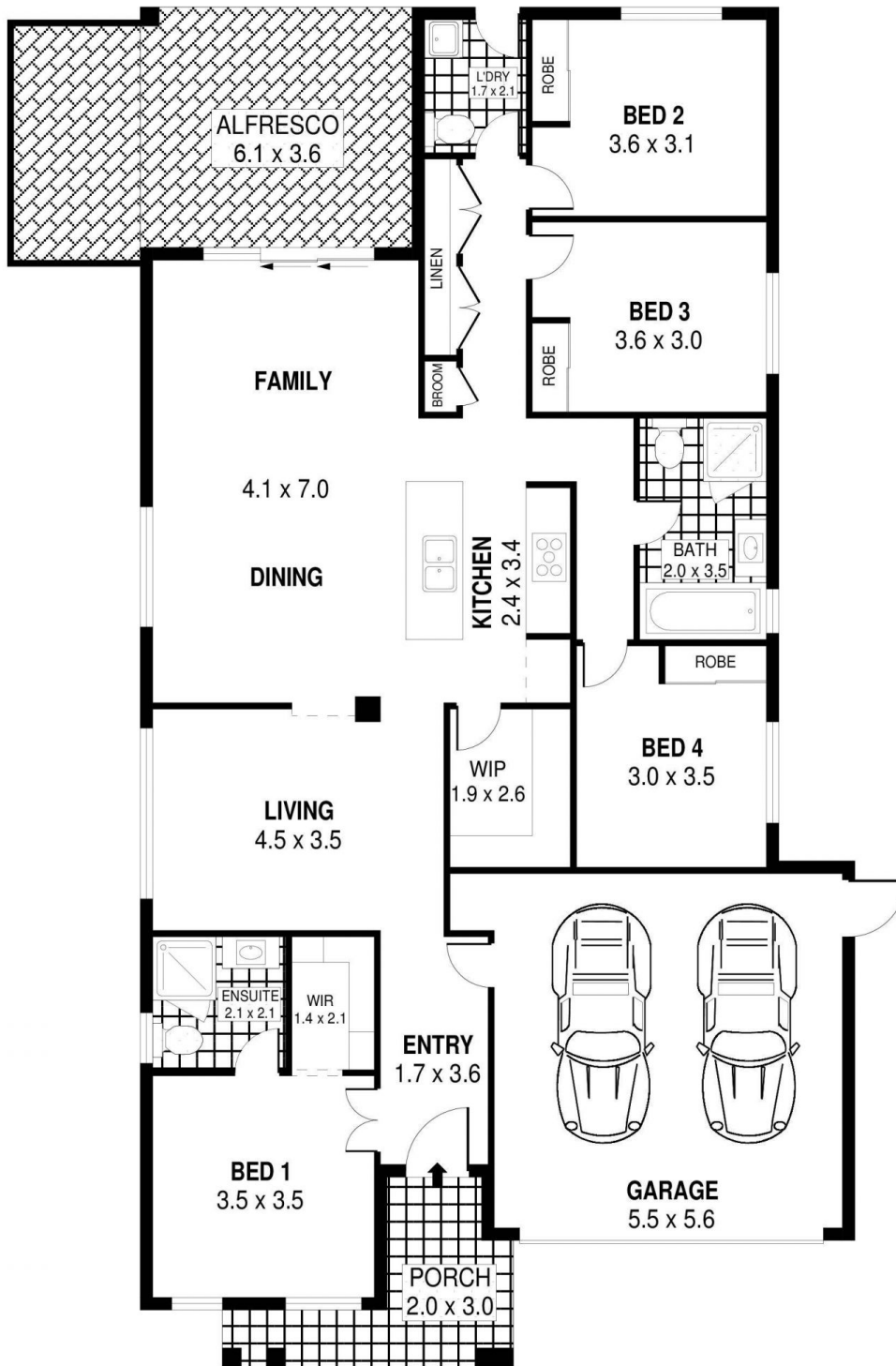


SCALE (METRES)

PLANS SHOWN ONLY INDICATIVE OF LAYOUT. DIMENSIONS ARE APPROXIMATE.
 Ref. No: 100631

6 SILTSTONE AVENUE

HORSLEY



PLANS SHOWN ONLY INDICATIVE OF LAYOUT. DIMENSIONS ARE APPROXIMATE.
 Ref. No: 100631

INT : 145m²
 EXT : 24m²
 GARAGE : 31m²

6 SILTSTONE AVENUE

HORSLEY