



1/22 Horsley Drive Horsley NSW

2 1 1

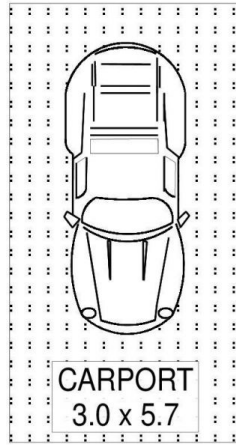
Quietly tucked away in a convenient location with loads of privacy, is this single level 2 bedroom villa which has been completely renovated throughout.

The practical layout, yard space, entertaining options and the no strata fees factor, makes this villa home truly unique and provides downsizers, first home buyers & investors with a great opportunity to enter the market.

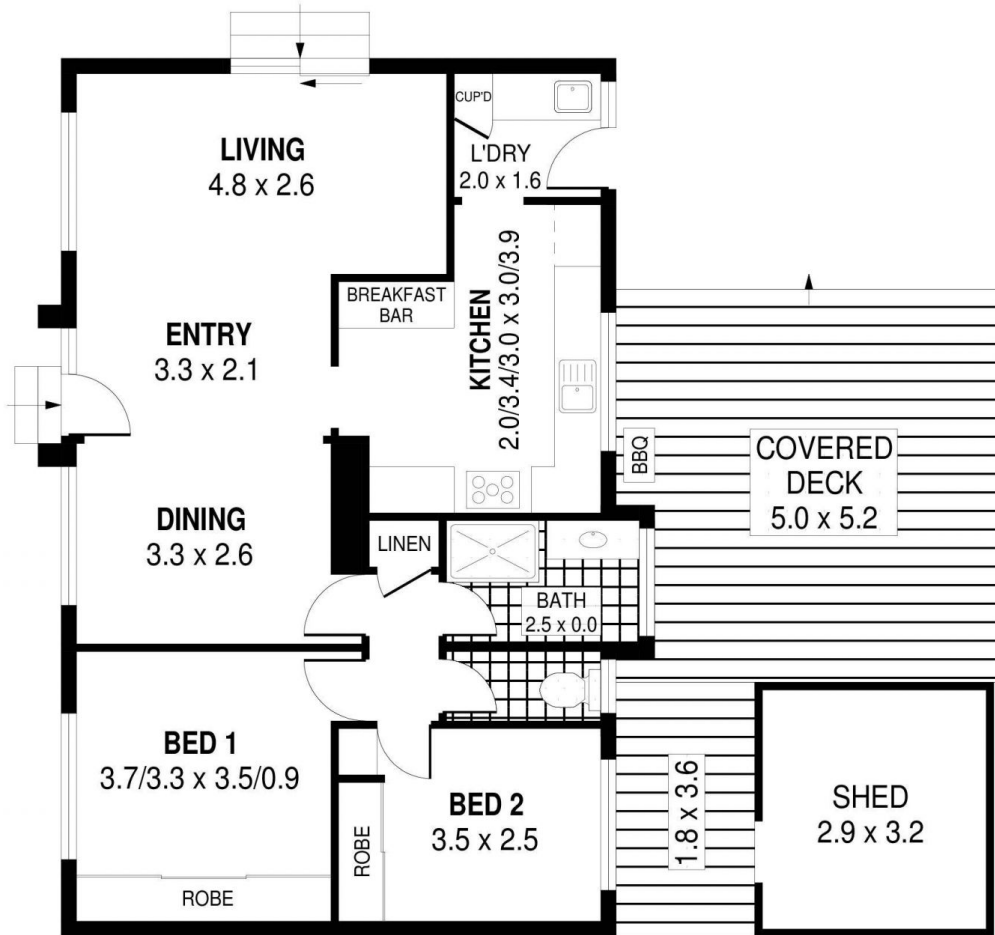
Offering built in wardrobes in both bedrooms, stylish kitchen & bathroom, spacious covered outdoor entertainers deck with pergola, a second smaller open air deck to enjoy the leafy surrounds and beautiful birdlife, generous yard space which backs onto a peaceful reserve with easy

[For full version visit the website](#)

Type : Villa
Price : \$ 615,000
Building Size : 11 sqm
View : <https://www.mcneice.com.au/8482919>



DETACHED



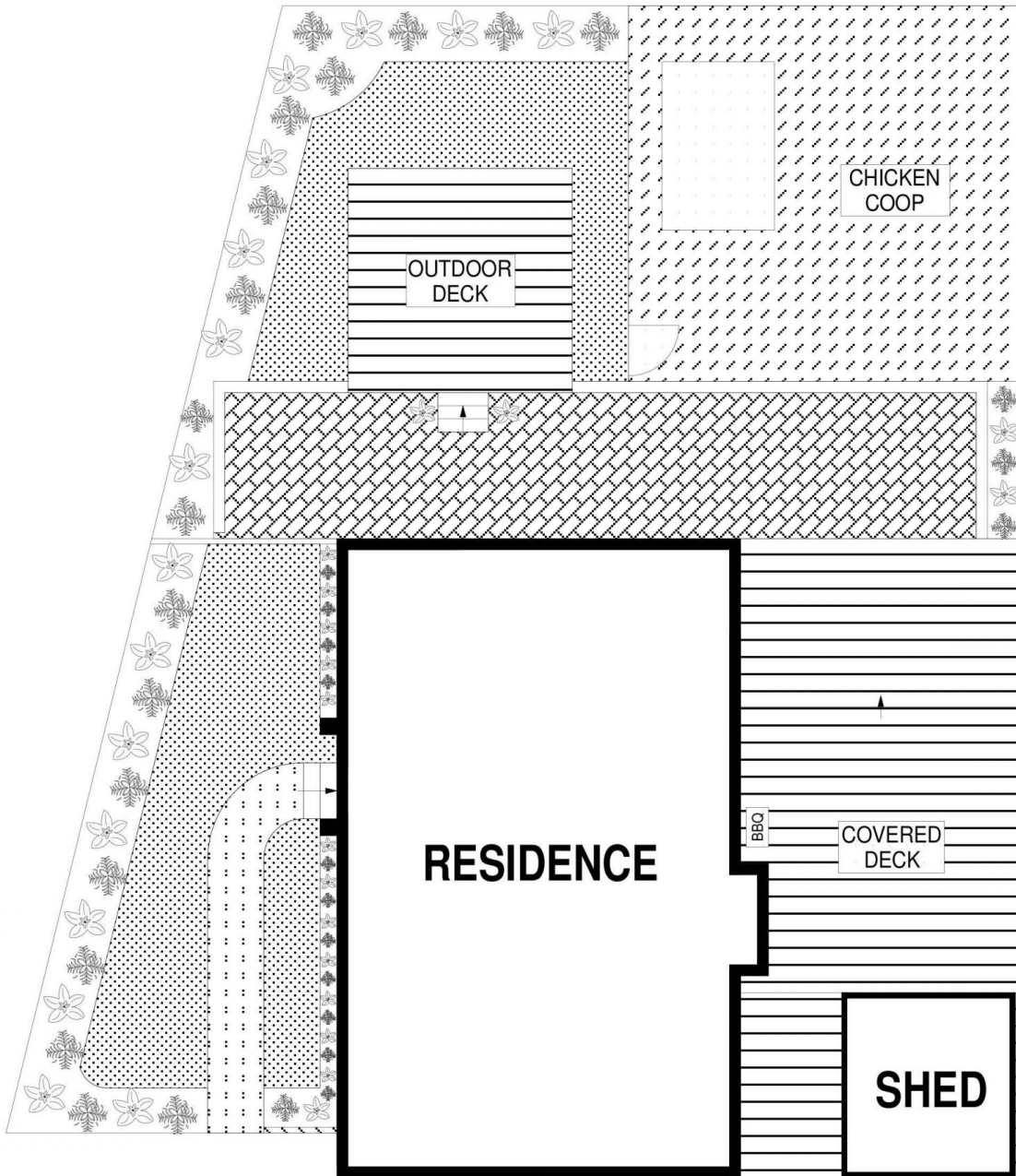
PLANS SHOWN ONLY INDICATIVE OF LAYOUT. DIMENSIONS ARE APPROXIMATE.
Ref. No: 102325

INT	: 76m ²
EXT	: 30m ²
SHED	: 9m ²
CARPORT	: 17m ²

1/22 HORSLEY DRIVE

HORSLEY

13.3m



SITE PLAN



PLANS SHOWN ONLY INDICATIVE OF LAYOUT. DIMENSIONS ARE APPROXIMATE.
Ref. No: 102325