



## 20 Parrish Avenue Mount Pleasant NSW

4 2 3

20 Parrish Avenue Mount Pleasant combines the essence of natural ambiance with an architectural re-designed home ready for you & your family.

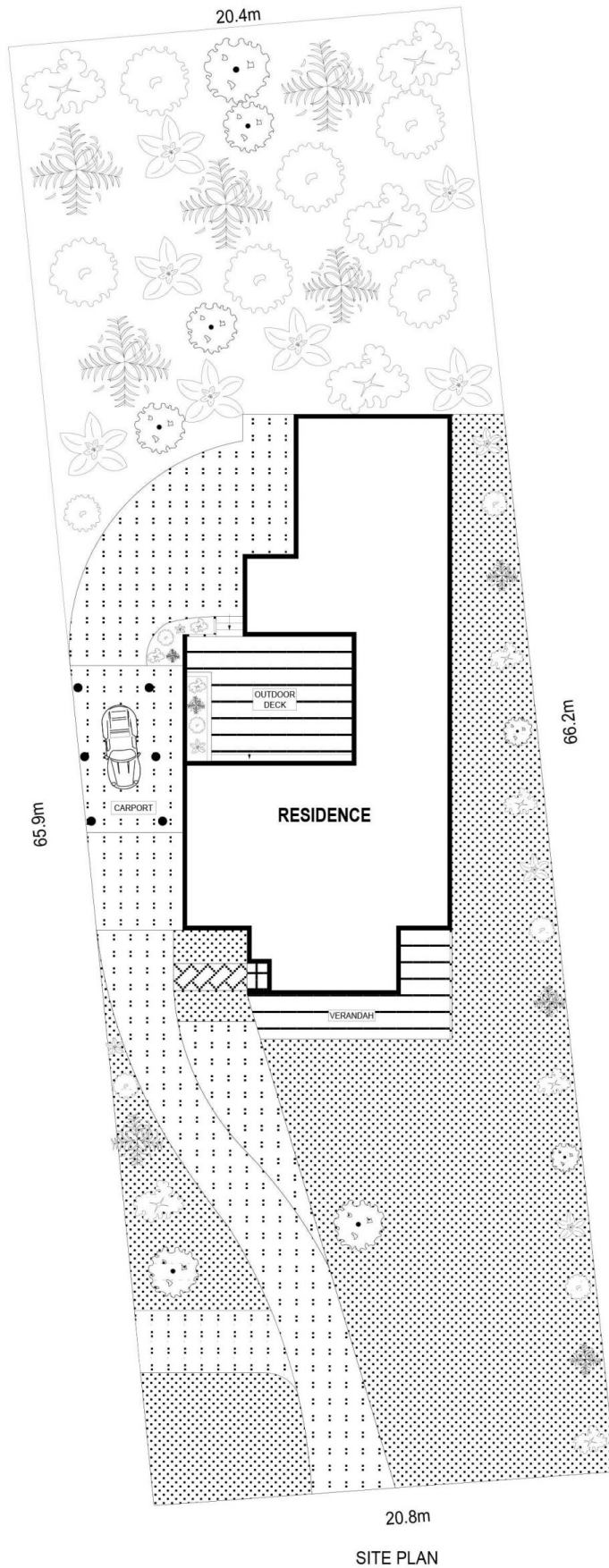
The location needs no introduction. One of Wollongong's best streets, emersed in nature and unrivalled leafy streets, this home is private, large, and only 10 minutes away from the Wollongong CDB, beaches and cafes.

The Main Features:

- 4 spacious bedrooms most with built in wardrobes and main with a quality designed ensuite
- Open plan kitchen with silestone benches, loads of

[For full version visit the website](https://www.mcneice.com.au)

**Type** : House  
**Building Size** : 21 sqm  
**Land Size** : 1353 sqm  
**View** : <https://www.mcneice.com.au/8482918>

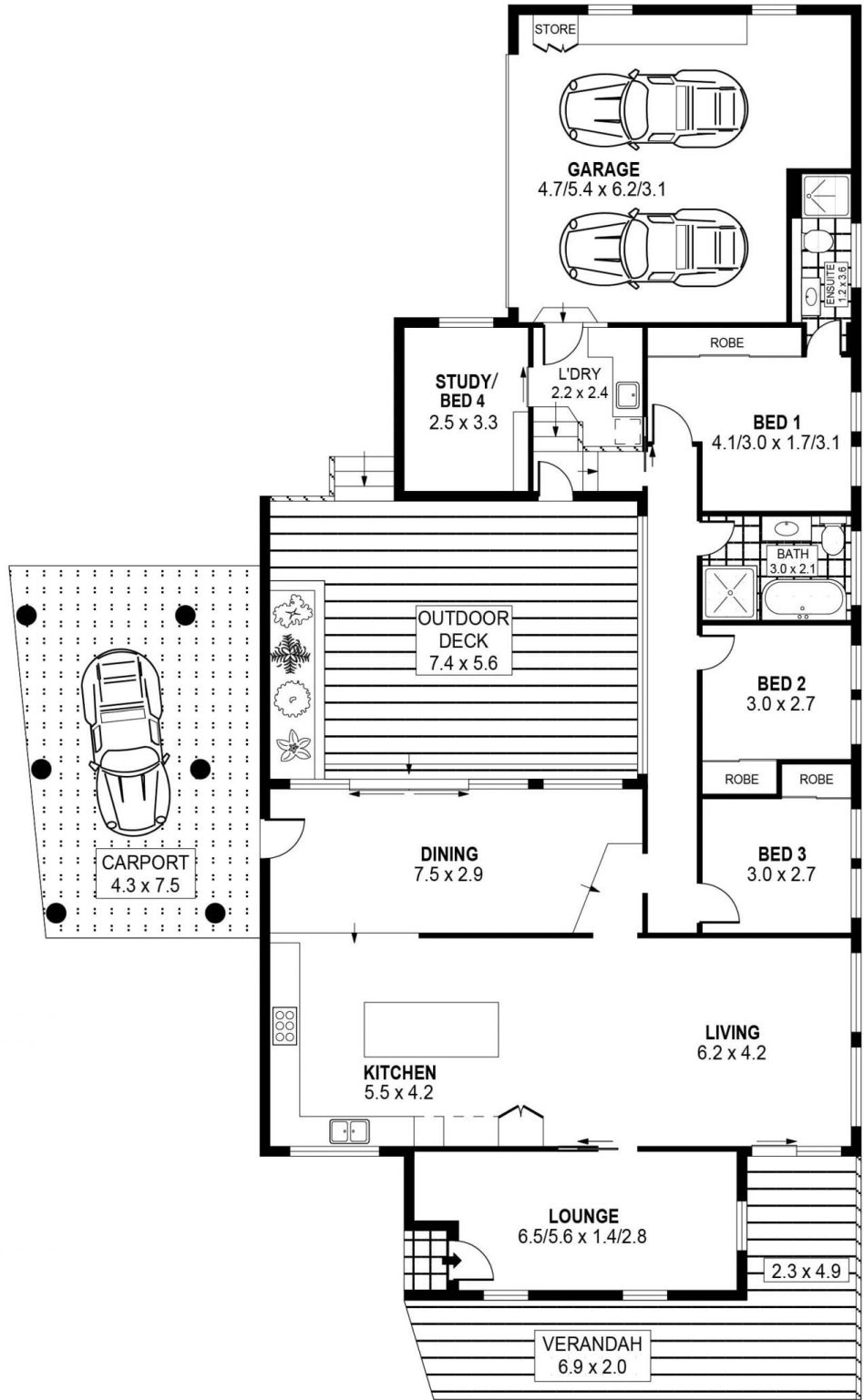


**SCALE (METRES)**

PLANS SHOWN ONLY INDICATIVE OF LAYOUT. DIMENSIONS ARE APPROXIMATE.  
 Ref. No: 97189

20 PARRISH AVENUE

MOUNT PLEASANT



**SCALE (METRES)**

PLANS SHOWN ONLY INDICATIVE OF LAYOUT. DIMENSIONS ARE APPROXIMATE.  
Ref. No: 97189

INT	: 160m <sup>2</sup>
EXT	: 66m <sup>2</sup>
GARAGE	: 38m <sup>2</sup>
CARPORT	: 35m <sup>2</sup>

20 PARRISH AVENUE

MOUNT PLEASANT