



## 14 Bentley Road Kembla Grange NSW

6 2 2

Just 2 years young stands this outstanding, 6-bedroom home in the newly established Kembla Grange Estate. This grand 2-story home is truly one to be admired, with unparalleled space, comfort, and style.

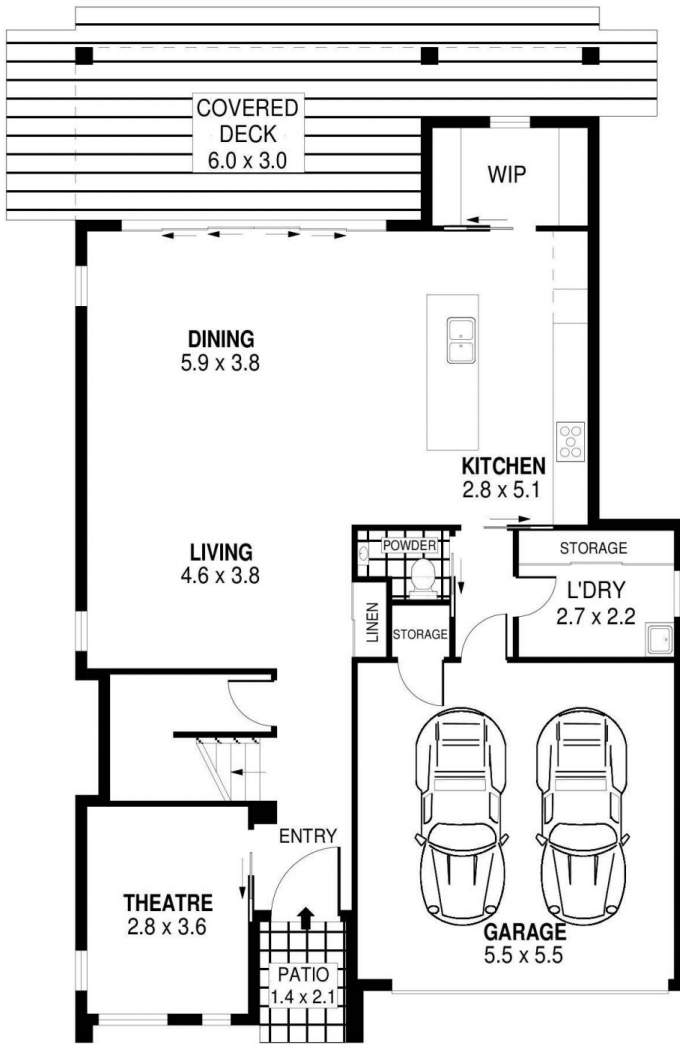
Featuring multiple large living areas, oversized bedrooms and a sparkling inground pool, it doesn't get much better than this.

The Main Features:

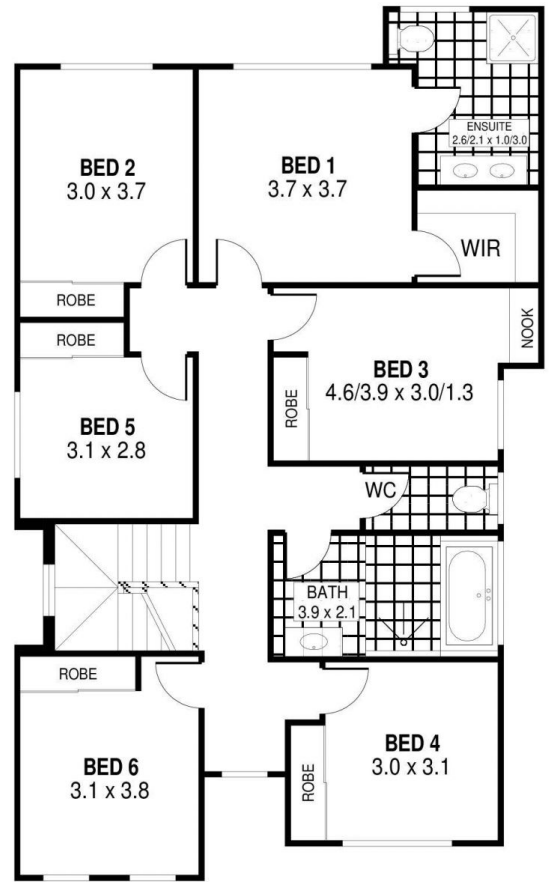
- Luxurious master suite with a walk-in wardrobe and fully tiled ensuite
- 5 additional spacious bedrooms all with built in robes
- Oversized open plan living and dining with polished

[For full version visit the website](#)

**Type** : House  
**Building Size** : 26 sqm  
**Land Size** : 450 sqm  
**View** : <https://www.mcneice.com.au/8482911>



GROUND LEVEL



LEVEL ONE



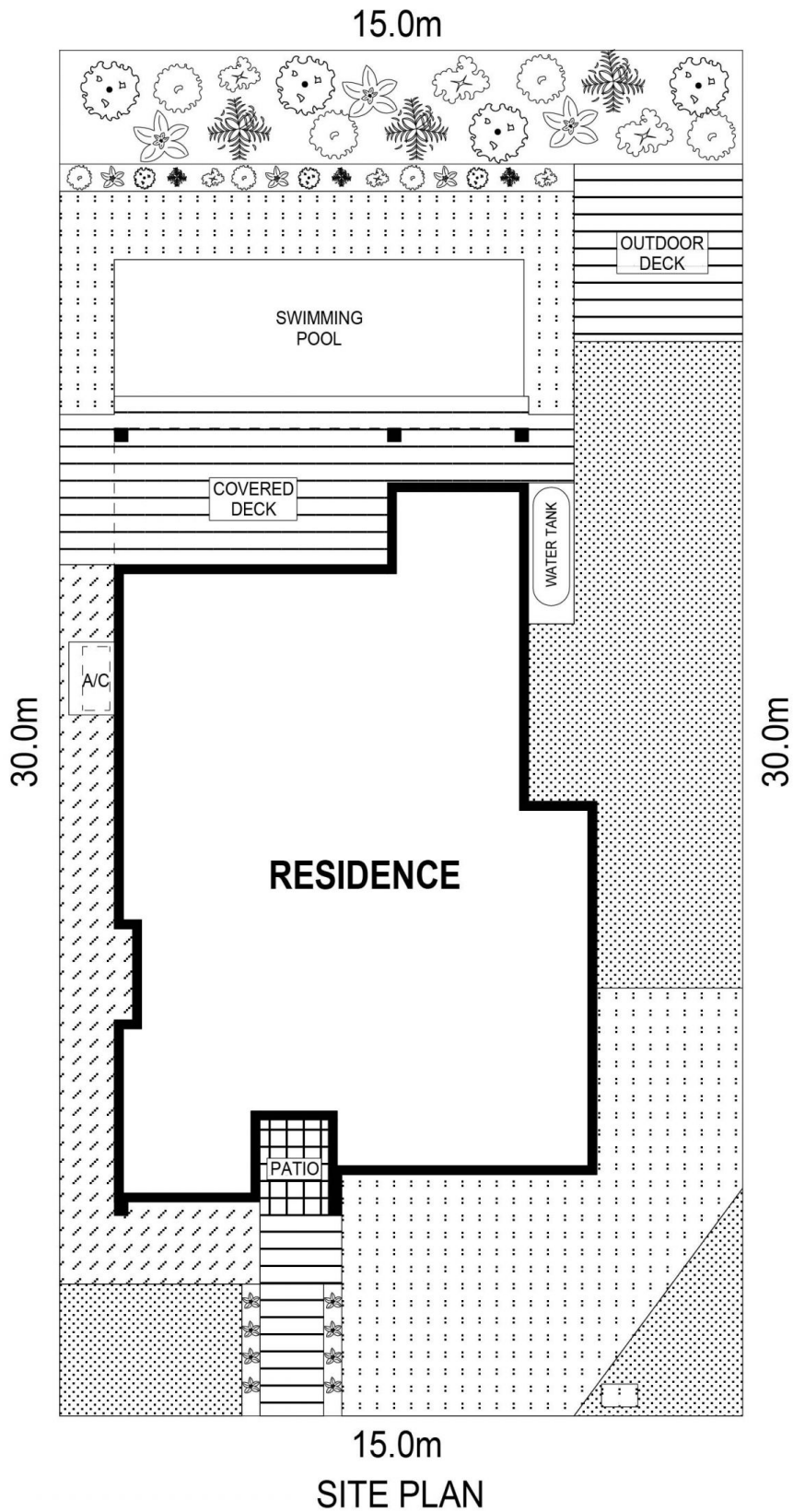
SCALE (METRES)

PLANS SHOWN ONLY INDICATIVE OF LAYOUT. DIMENSIONS ARE APPROXIMATE.  
Ref. No: 96774

|        |                    |
|--------|--------------------|
| INT    | :212m <sup>2</sup> |
| EXT    | : 37m <sup>2</sup> |
| GARAGE | : 31m <sup>2</sup> |

14 BENTLEY ROAD

KEMBLA GRANGE



SCALE (METRES)

PLANS SHOWN ONLY INDICATIVE OF LAYOUT. DIMENSIONS ARE APPROXIMATE.  
Ref. No: 96774

14 BENTLEY ROAD

KEMBLA GRANGE