



8 Jurunga Court Horsley NSW

3  1  1 

A beautiful low maintenance, single level 3-bedroom home with everything you need inside accompanied by the perfect entertaining space outside. Located within one of Horsley's most secluded streets, 8 Jurunga Court is ideal for any first homeowners, downsizers or investors.

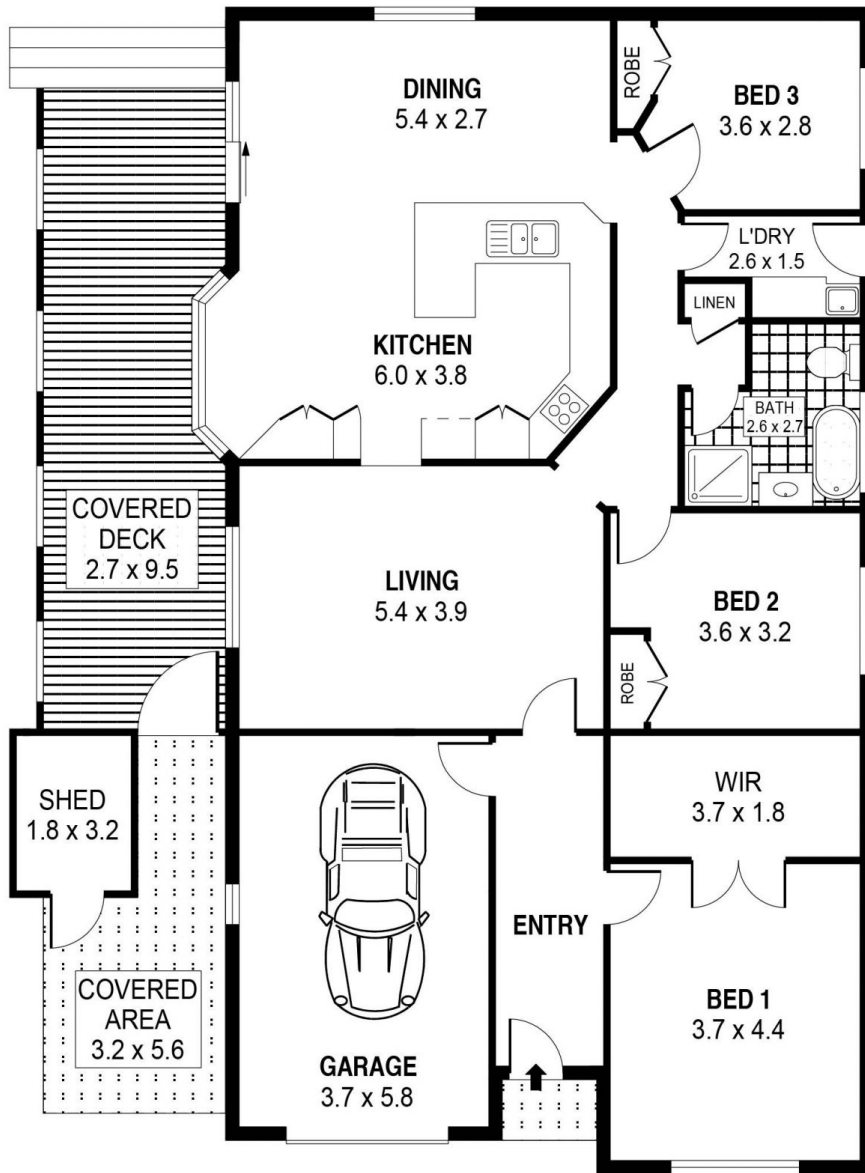
Type : House

View : <https://www.mcneice.com.au/8482909>

The Main Features:

- 3 spacious bedrooms all with built in robes and main with large walk in robe and roller shutter
- Ultra modern kitchen and dining area flowing in between the dual living spaces
- 2 living areas, perfect for the growing family
- Modern fully tiled bathroom, perfectly designed to

[For full version visit the website](https://www.mcneice.com.au)

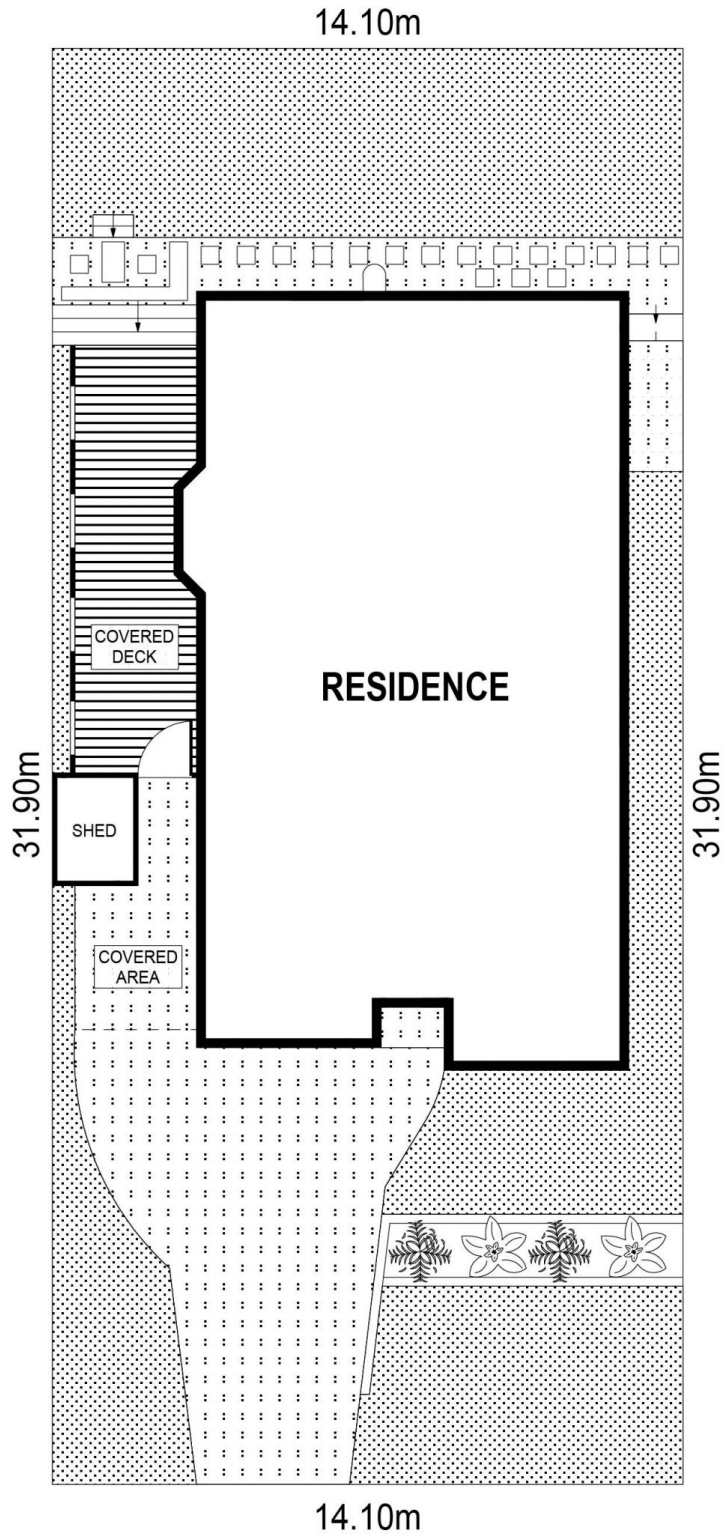


PLANS SHOWN ONLY INDICATIVE OF LAYOUT. DIMENSIONS ARE APPROXIMATE.
Ref. No: 95308

INT	: 130m ²
EXT	: 36m ²
GARAGE	: 21m ²
SHED	: 4m ²

8 JURUNGA COURT

HORSLEY



14.10m
31.90m
RESIDENCE
COVERED DECK
SHED
COVERED AREA
31.90m
14.10m
SITE PLAN



SCALE (METRES)

PLANS SHOWN ONLY INDICATIVE OF LAYOUT. DIMENSIONS ARE APPROXIMATE.
Ref. No: 95308