



## 20 Burgess Avenue Figtree NSW

4 1 1

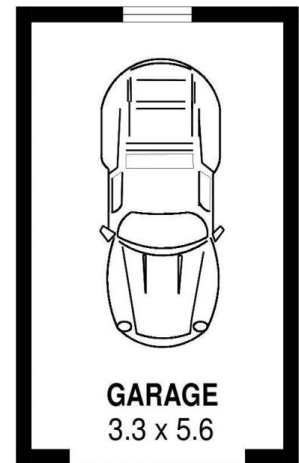
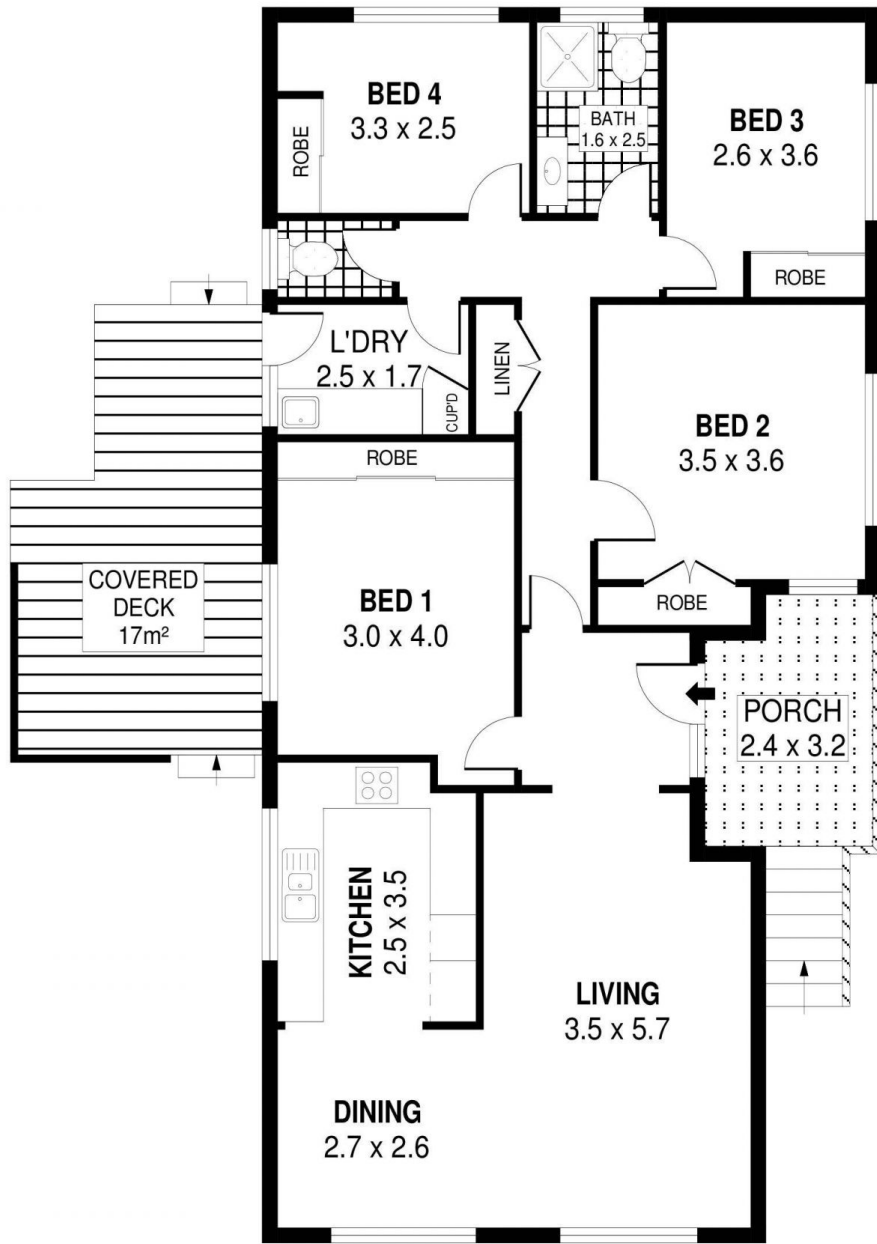
Relishing in an elevated position with expansive views and contemporary internal finishes, is this renovated 4 bedroom family home, which is perfect for those looking to live in one of the Illawarra's most popular suburbs.

**Type** : House  
**Land Size** : 556 sqm  
**View** : <https://www.mcneice.com.au/8482906>

Conveniently located within close proximity to schools, public transport, restaurants, parklands, cafes, Figtree Grove Shopping Centre and only a 10 minute drive to Wollongong CBD.

Featuring generous sized bedrooms with built in wardrobes, polished timber floors throughout, good sized living area, covered entertaining area, low maintenance yard and a single lock up garage.

[For full version visit the website](#)



DETACHED

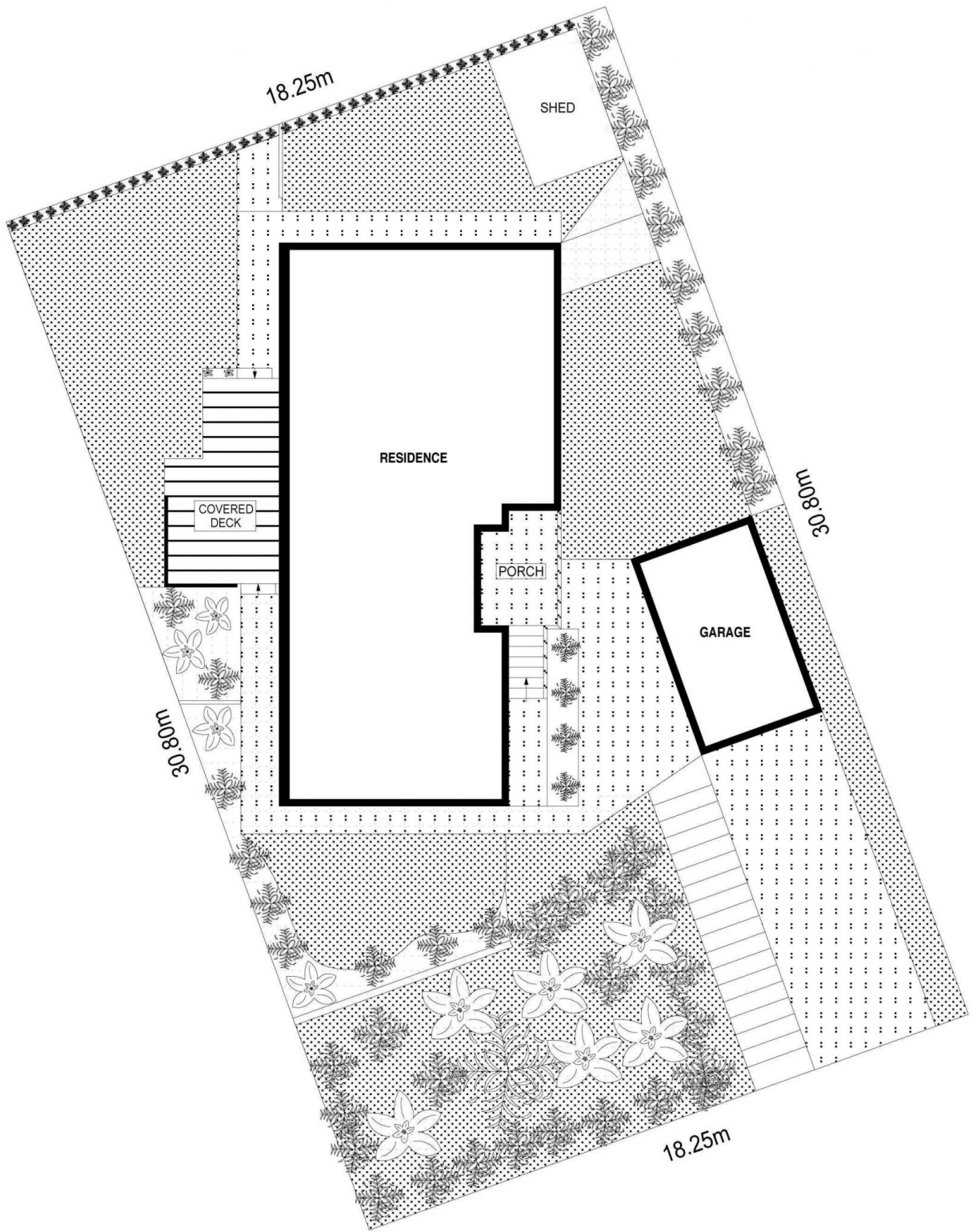


PLANS SHOWN ONLY INDICATIVE OF LAYOUT. DIMENSIONS ARE APPROXIMATE.  
Ref. No: 97216

INT : 106m<sup>2</sup>  
EXT : 23m<sup>2</sup>  
GARAGE : 18m<sup>2</sup>

20 BURGESS AVENUE

FIGTREE



SITE PLAN



SCALE (METRES)

PLANS SHOWN ONLY INDICATIVE OF LAYOUT. DIMENSIONS ARE APPROXIMATE.

Ref. No: 97216