




15 Godson Way Wongawilli NSW

3  2  2 

A beautifully presented low maintenance 3-bedroom home with everything you need inside accompanied by the perfect zero maintenance yard! Set in the heart of the Vista Park Estate, this home is certainly the most ideal start you'll find!

Type : House

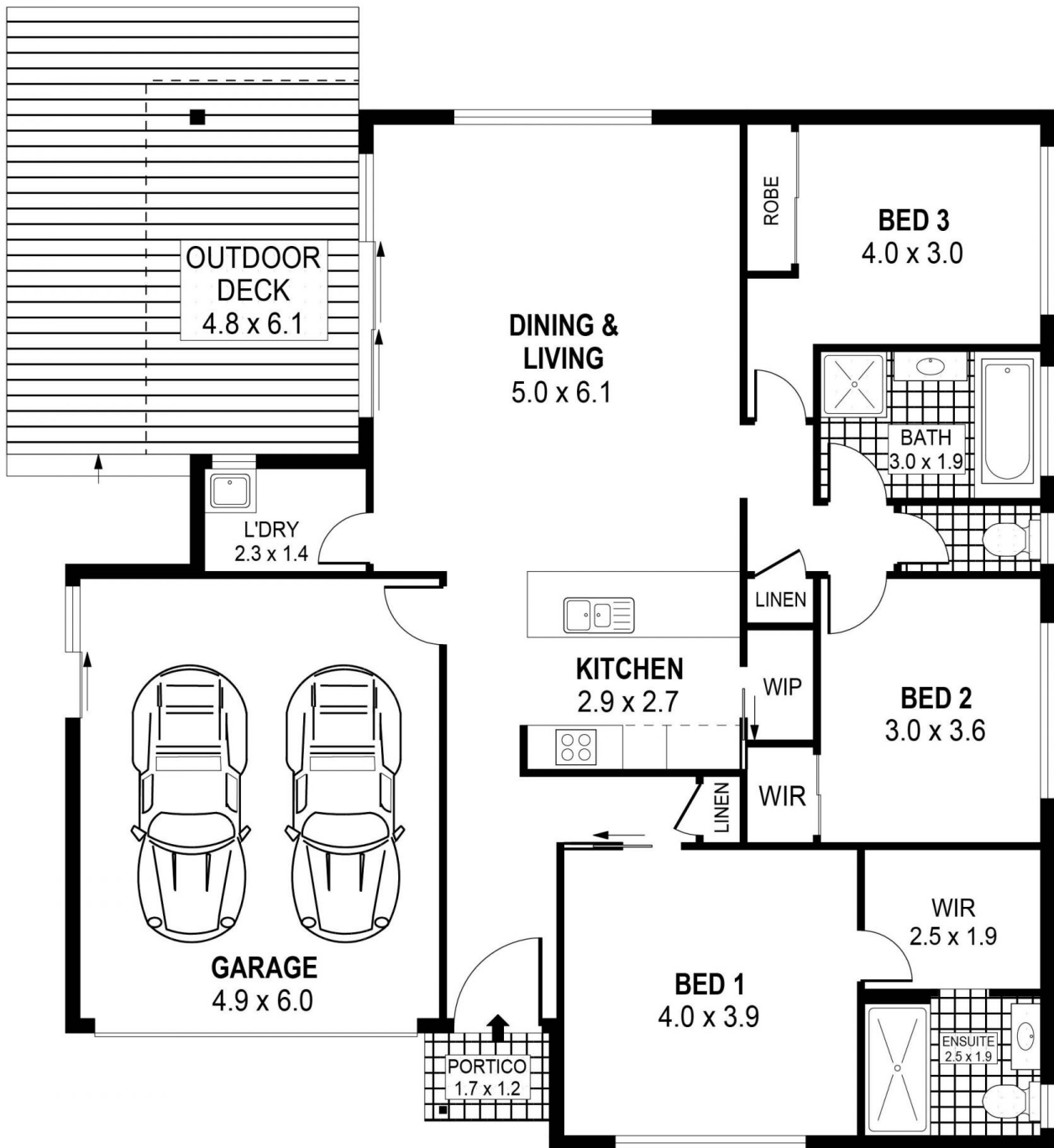
Price : \$ 760,000

View : <https://www.mcneice.com.au/8482890>

The Main Features:

- 3 spacious bedrooms all with built in robes and main with large ensuite and walk in robe
- Open plan living, kitchen and meals area, flowing onto the outdoor alfresco area
- Large galley style kitchen with breakfast bench, built in bin, dishwasher and walk in pantry

[For full version visit the website](https://www.mcneice.com.au)



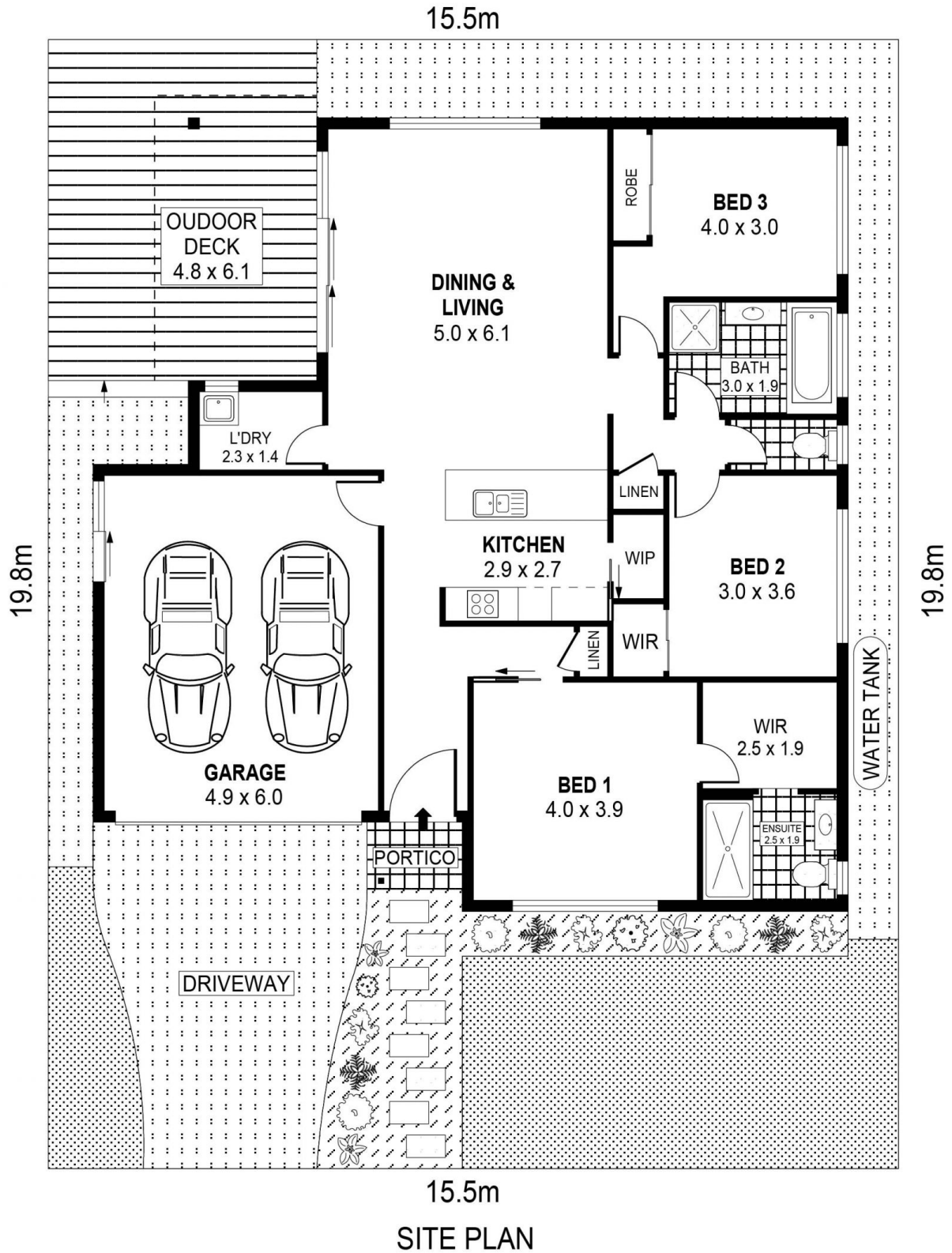
SCALE (METRES)

PLANS SHOWN ONLY INDICATIVE OF LAYOUT. DIMENSIONS ARE APPROXIMATE.
Ref. No: 87962

INT : 115m²
EXT : 17m²
GARAGE : 29m²

15 GODSON WAY

WONGAWILLI



PLANS SHOWN ONLY INDICATIVE OF LAYOUT. DIMENSIONS ARE APPROXIMATE.
Ref. No: 87962

15 GODSON WAY

WONGAWILLI