



22 Karara Avenue Horsley NSW

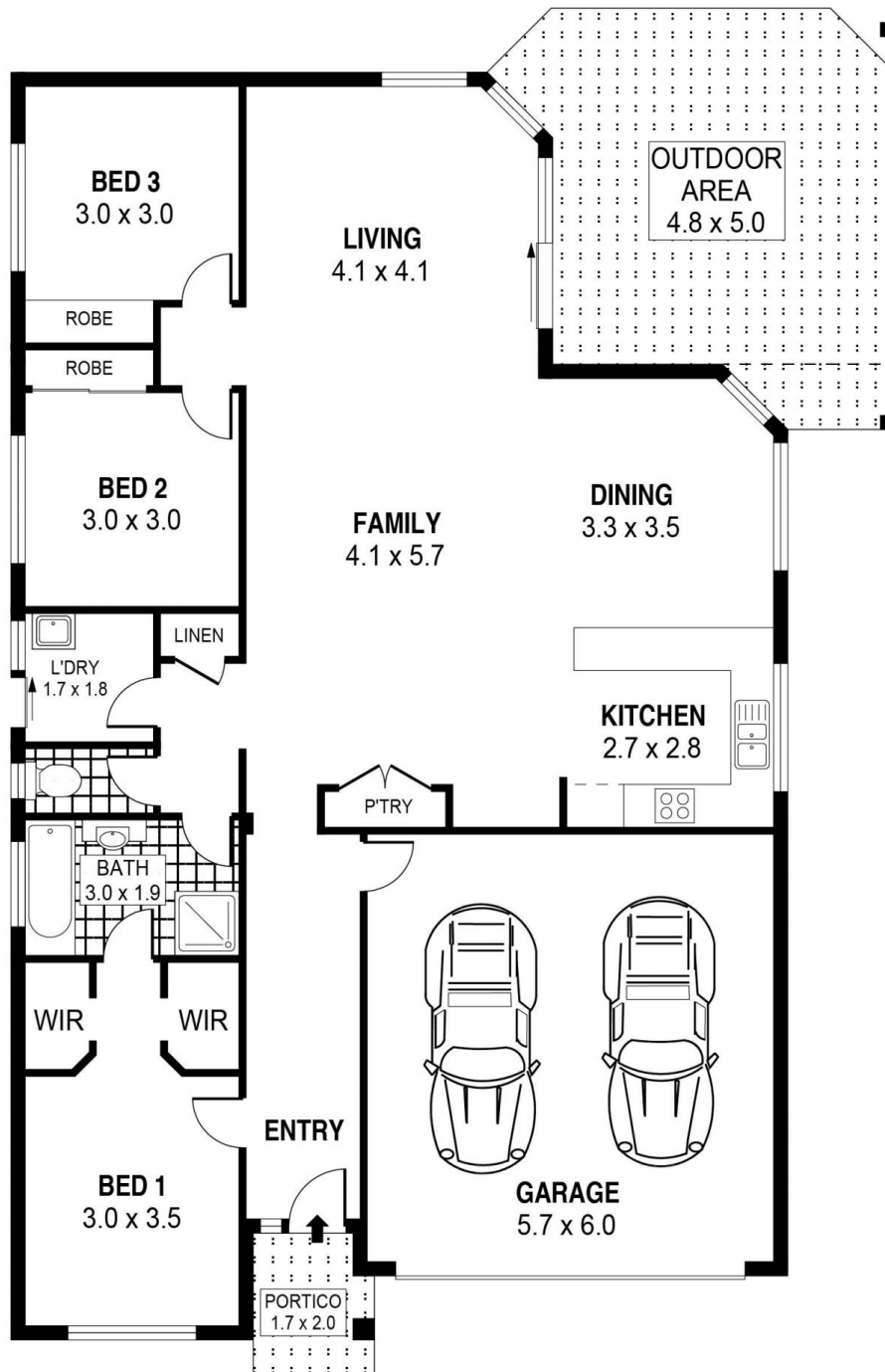
3 1 2

Quietly tucked away in a convenient position of Horsley, is this spacious, single level, energy efficient family home which is sure to impress those looking to nest or invest.

Offering plenty of space throughout with 3 good sized bedrooms, open plan layout, neat 2-way ensuite and main bathroom, separate toilet, well presented galley style kitchen with plenty of bench & cupboard space, solar panels installed which offers great energy efficiency to reduce electricity bills, great undercover outdoor alfresco entertaining area for barbeques & entertaining guests, easy maintenance backyard with manicured gardens, space to park a small trailer on the side of the home & a big double lock up garage to top it off!

Type : House
Price : \$ 690,000
Land Size : 450 sqm
View : <https://www.mcneice.com.au/8482888>

[For full version visit the website](#)

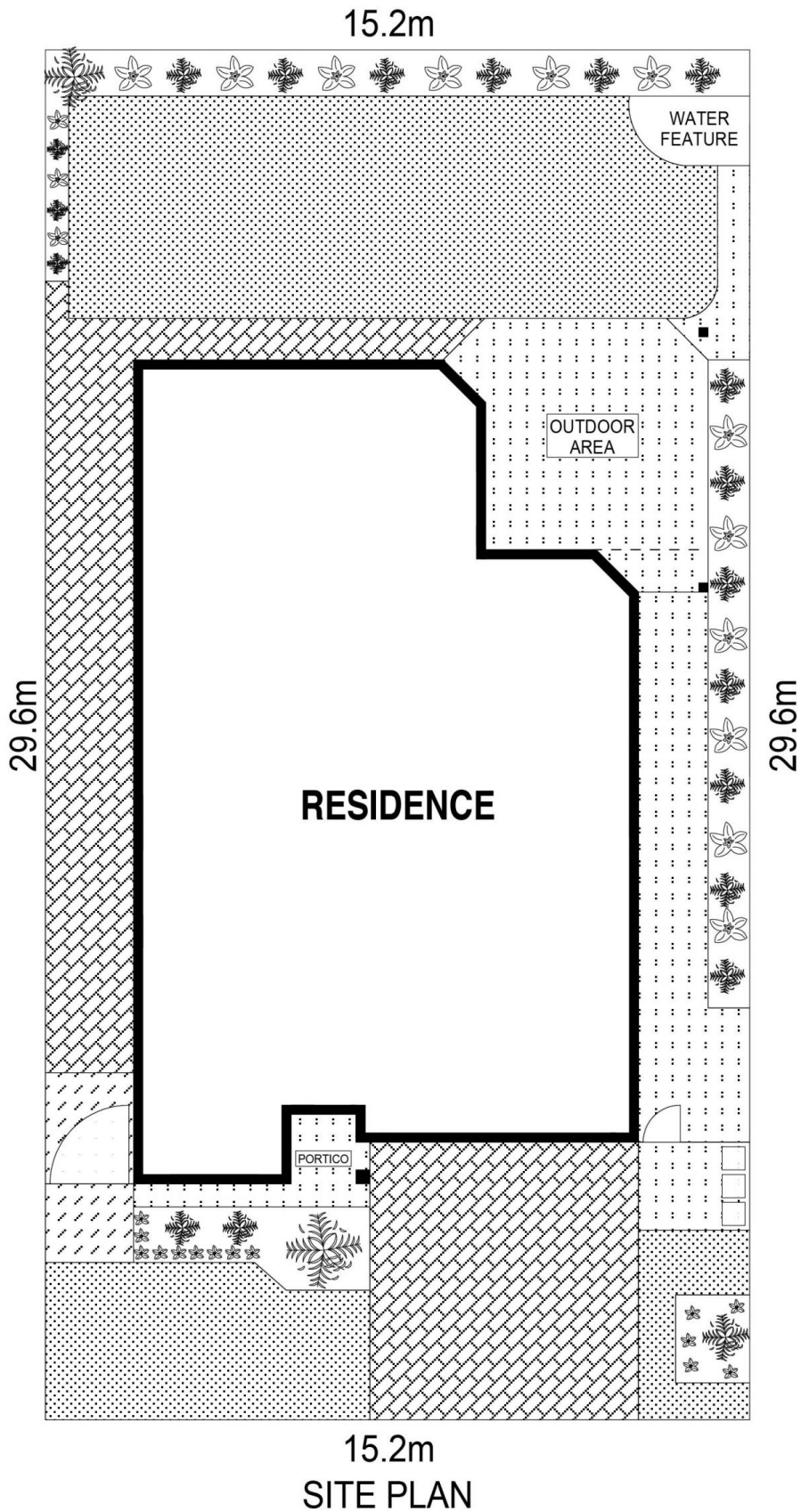


PLANS SHOWN ONLY INDICATIVE OF LAYOUT. DIMENSIONS ARE APPROXIMATE.
Ref. No: 87047

INT : 125m²
EXT : 29m²
GARAGE : 34m²

22 KARARA AVENUE

HORSLEY



SCALE (METRES)

PLANS SHOWN ONLY INDICATIVE OF LAYOUT. DIMENSIONS ARE APPROXIMATE.
Ref. No: 87047

22 KARARA AVENUE

HORSLEY