

3 Amanda Place Horsley NSW

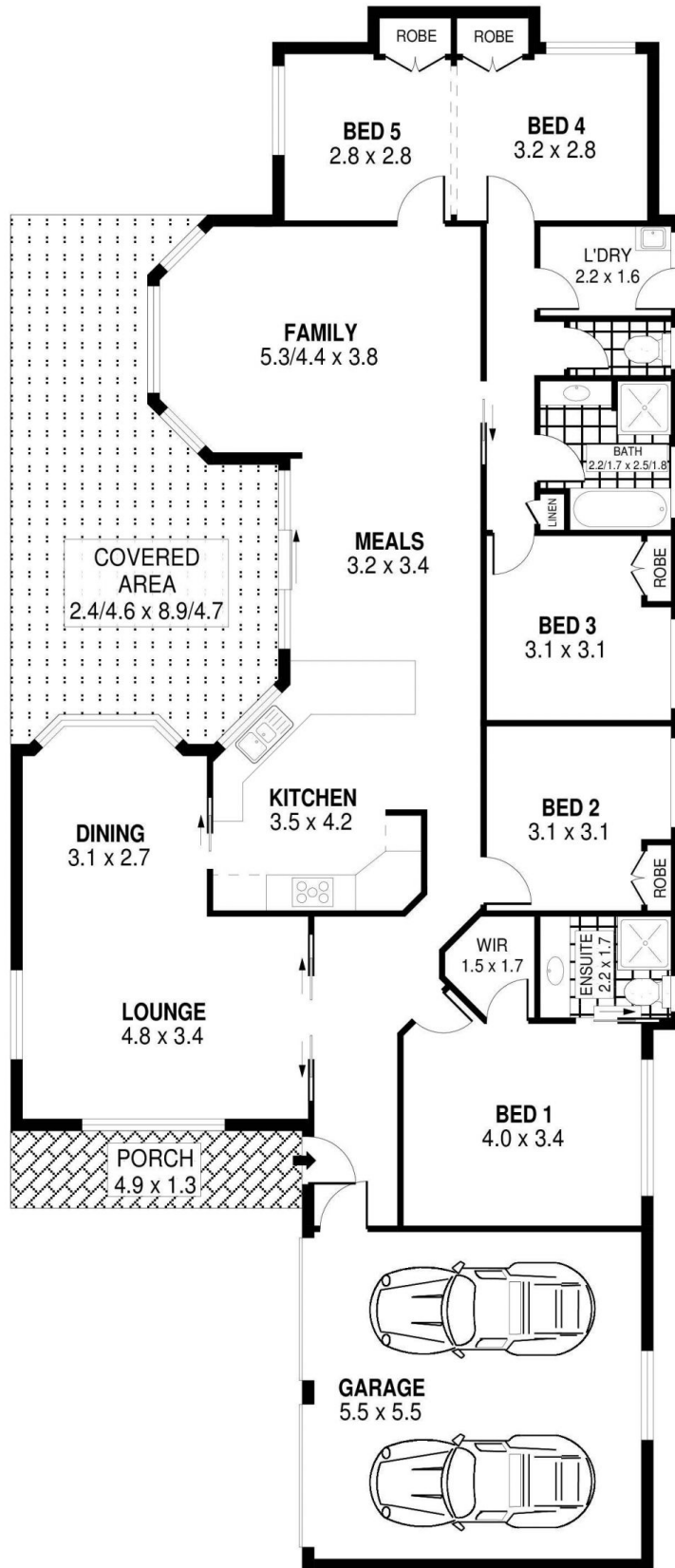
4 2 4

Nestled in a quiet cul-de-sac location which is perfect for families, is this spacious 4 bedroom brick veneer home with potential to add a 5th bedroom and offers loads of great features.

Type : House
Price : \$ 762,500
View : <https://www.mcneice.com.au/8482877>

Occupying a generous sized 679m² parcel of level land, enjoying renovated features throughout with multiple living areas and great energy efficiency (solar panels & battery installed), a great undercover outdoor entertaining area to host guests, a swimming pool to enjoy as the weather heats up and loads of parking for the entire family which includes space for a boat, caravan or additional cars makes this home a stand out from other homes in the area and one not to be missed

[For full version visit the website](https://www.mcneice.com.au)

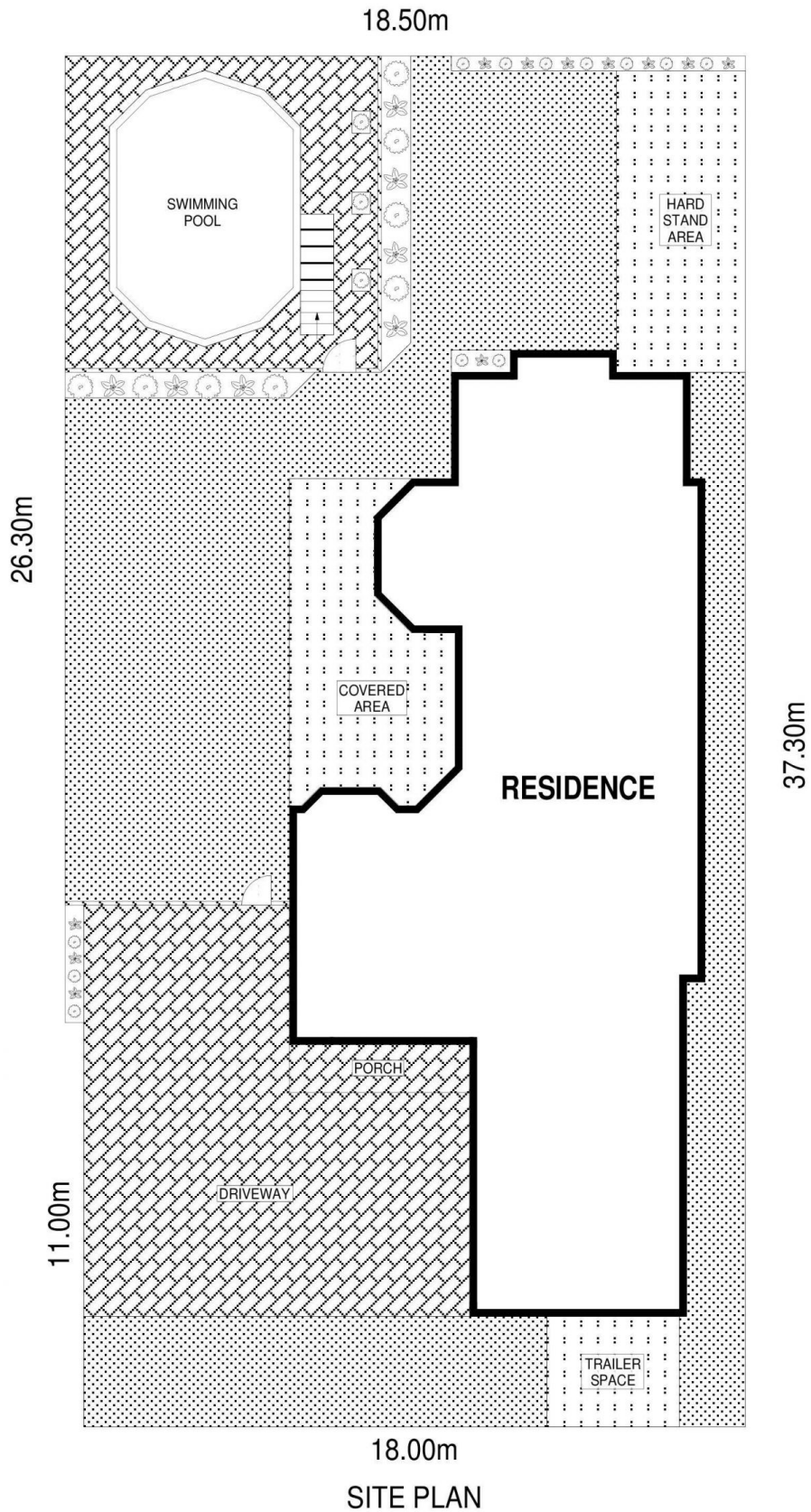


PLANS SHOWN ONLY INDICATIVE OF LAYOUT. DIMENSIONS ARE APPROXIMATE.
Ref. No: 85427

INT : 161m²
EXT : 37m²
GARAGE : 30m²

3 AMANDA PLACE

HORSLEY



SCALE (METRES)

PLANS SHOWN ONLY INDICATIVE OF LAYOUT. DIMENSIONS ARE APPROXIMATE.
Ref. No: 85427

3 AMANDA PLACE

HORSLEY