



328 Flagstaff Road Lake Heights NSW

4 3 2

It's not too often a large-scale family home in a super convenient location hits the market. 328 Flagstaff Road offers unrivalled space, quality and design, catering to all corners of the marketplace.

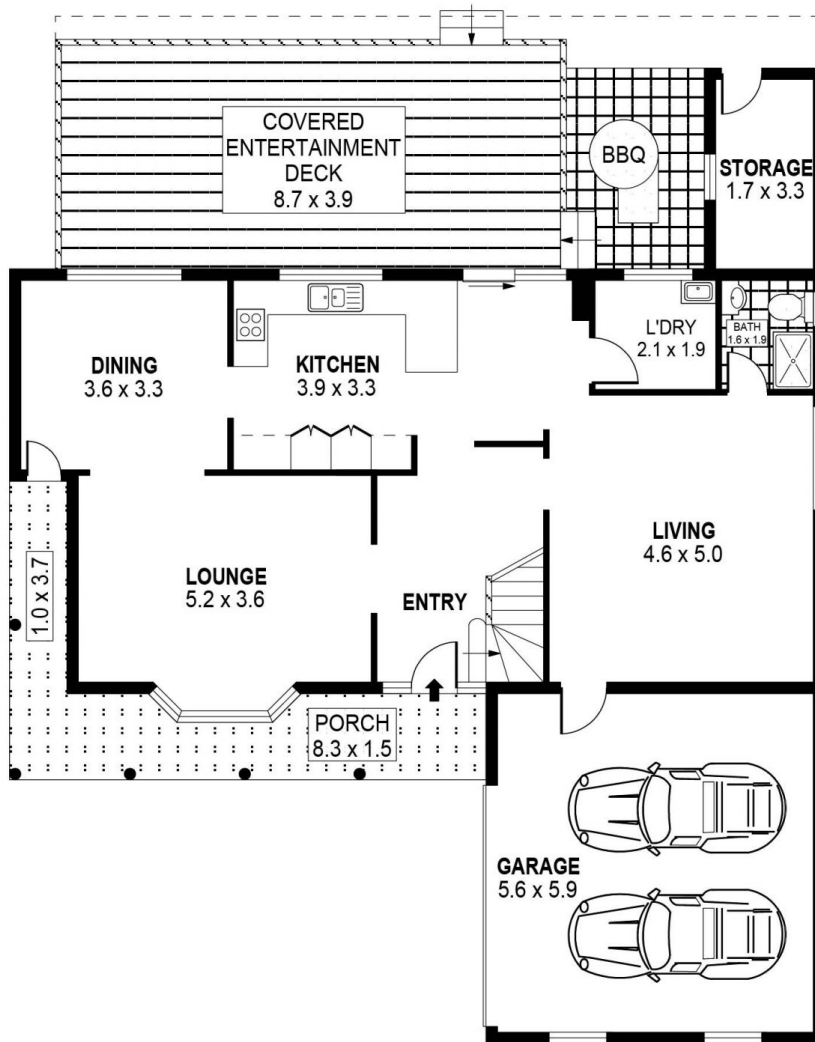
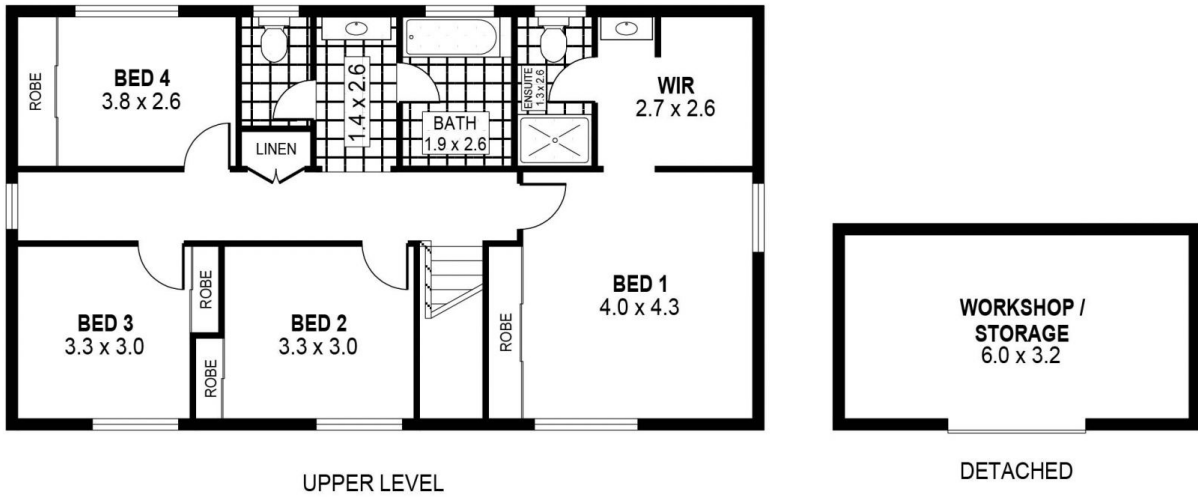
Type : House
Land Size : 564 sqm
View : <https://www.mcneice.com.au/8482876>

From the large front and rear yards, to the huge 2 story internal space, this home offers so many additional benefits to your everyday property!

Accompanying all of these benefits the property is located within a 5-minute walk directly to the lake

The Main Features:

[For full version visit the website](#)



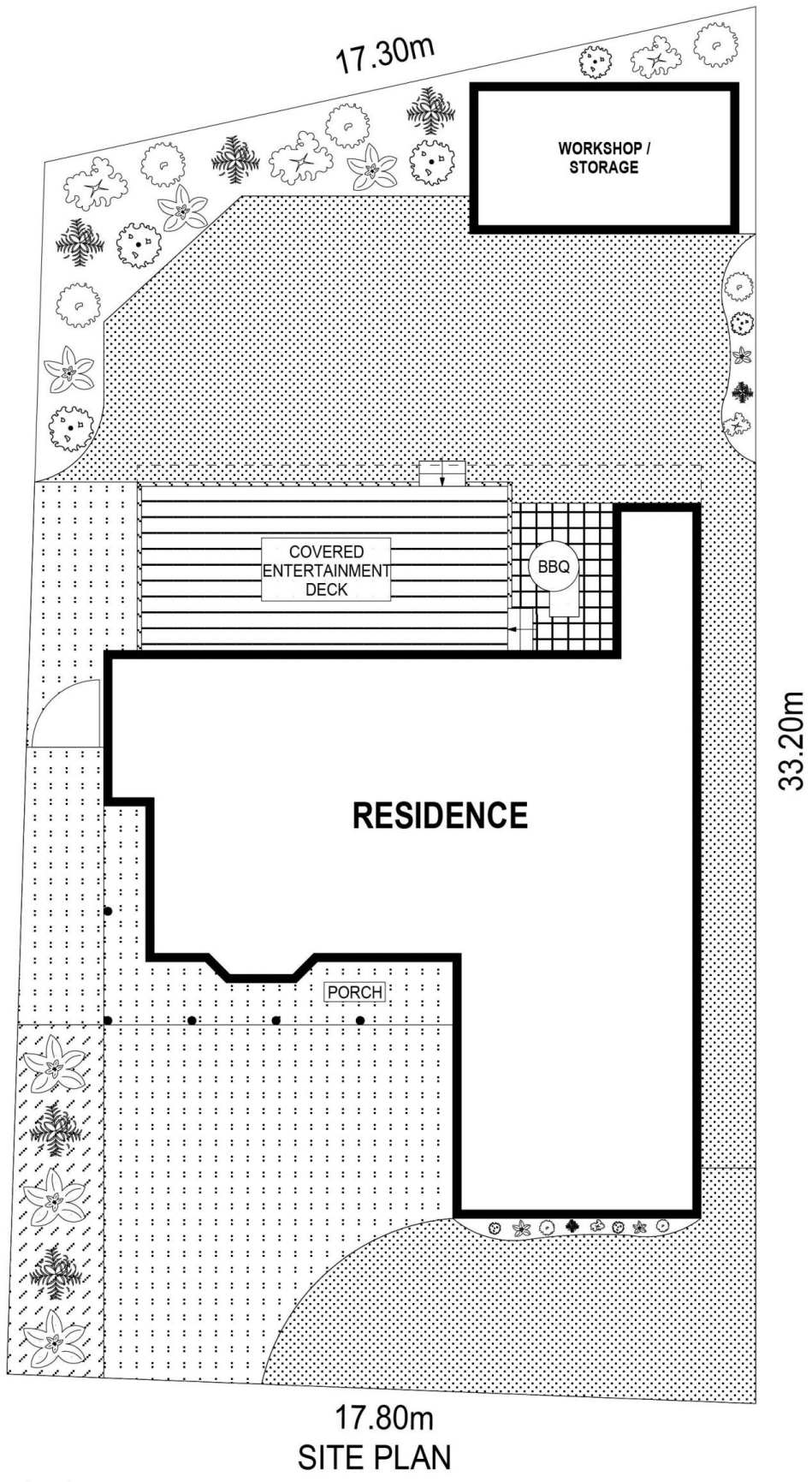
0 1 2 3 4 5
SCALE (METRES)

PLANS SHOWN ONLY INDICATIVE OF LAYOUT. DIMENSIONS ARE APPROXIMATE.
 Ref. No: 85467

INT : 184m²
 EXT : 49m²
 GARAGE : 32m²
 STORAGE : 6m²
 DETACHED : 19m²

328 FLAGSTAFF ROAD

LAKE HEIGHTS



SCALE (METRES)

PLANS SHOWN ONLY INDICATIVE OF LAYOUT. DIMENSIONS ARE APPROXIMATE.
Ref. No: 85467

328 FLAGSTAFF ROAD

LAKE HEIGHTS