






376 Crown Street Wollongong NSW

3  1  1 

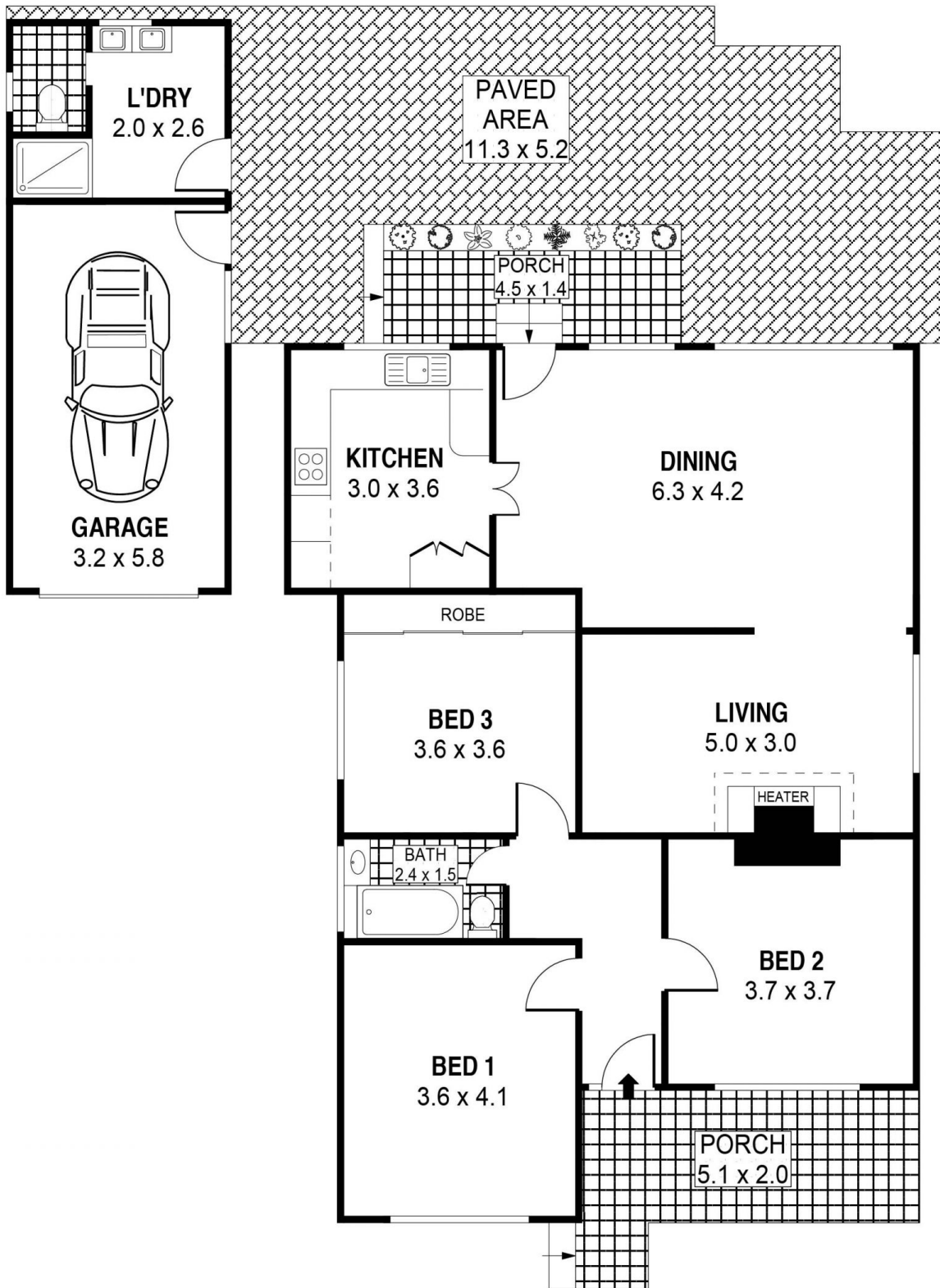
A character filled cottage like no other. From the high ceilings, original charm right through to the large level backyard, this home is ideal for any investor or first home buyer. The location speaks for itself as you're within minutes of the Wollongong CBD and medical precinct. This home is truly something special and offers loads of future potential.

Type : House
Price : \$ 1,000,000
Land Size : 638 sqm
View : <https://www.mcneice.com.au/8482872>

The Main Features:

- 3 spacious bedrooms all with high ceilings and one with built in wardrobes
- Huge living and dining space, offering the potential for 2

[For full version visit the website](#)



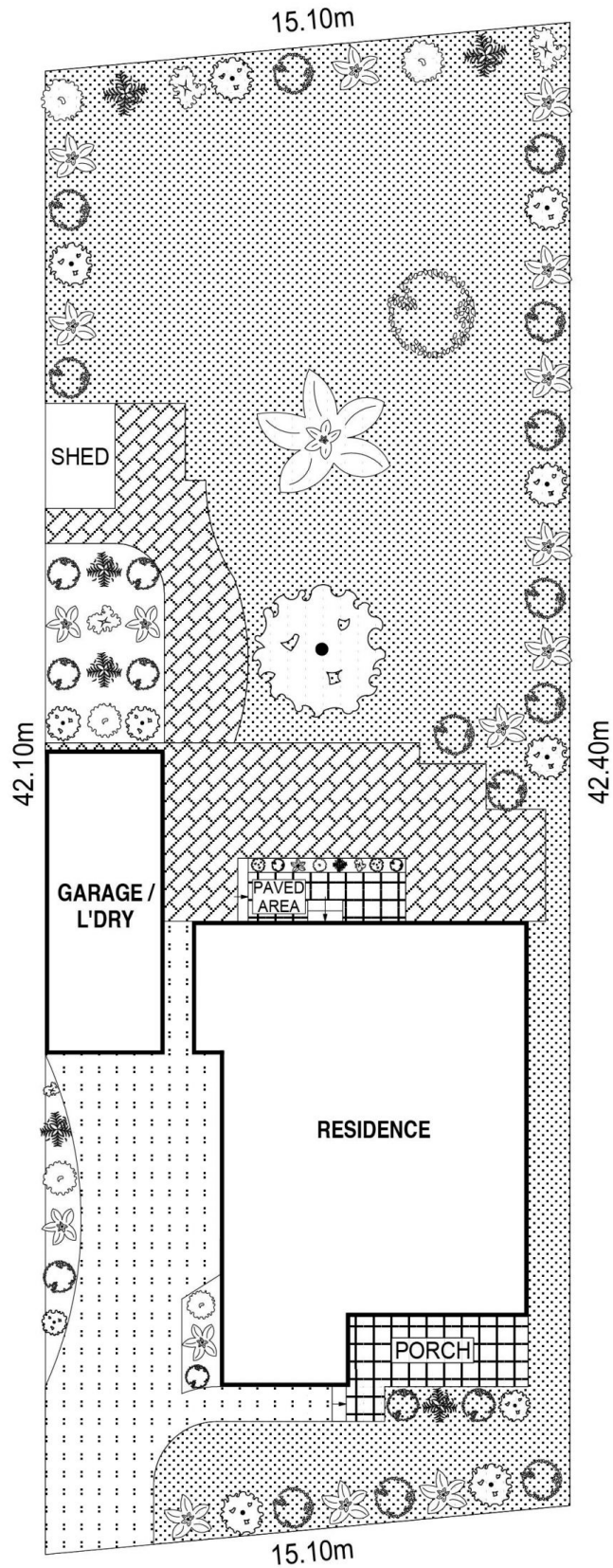
0 1 2 3 4 5
 SCALE (METRES)

PLANS SHOWN ONLY INDICATIVE OF LAYOUT. DIMENSIONS ARE APPROXIMATE.
 Ref. No: 84808

INT : 105m²
 EXT : 52m²
 GARAGE / L'DRY : 27m²

376 CROWN STREET

WOLLONGONG



SITE PLAN

PLANS SHOWN ONLY INDICATIVE OF LAYOUT. DIMENSIONS ARE APPROXIMATE.
 Ref. No: 84808

376 CROWN STREET

WOLLONGONG