






88 Hillside Drive Albion Park NSW

3  2  1 

Conveniently set on a 635m² block in a quiet neighbourhood, in an elevated position and taking full advantage of the sunny north easterly aspect towards Lake Illawarra, is this renovated 3 bedroom brick veneer family home with side rear yard access!

Type : House

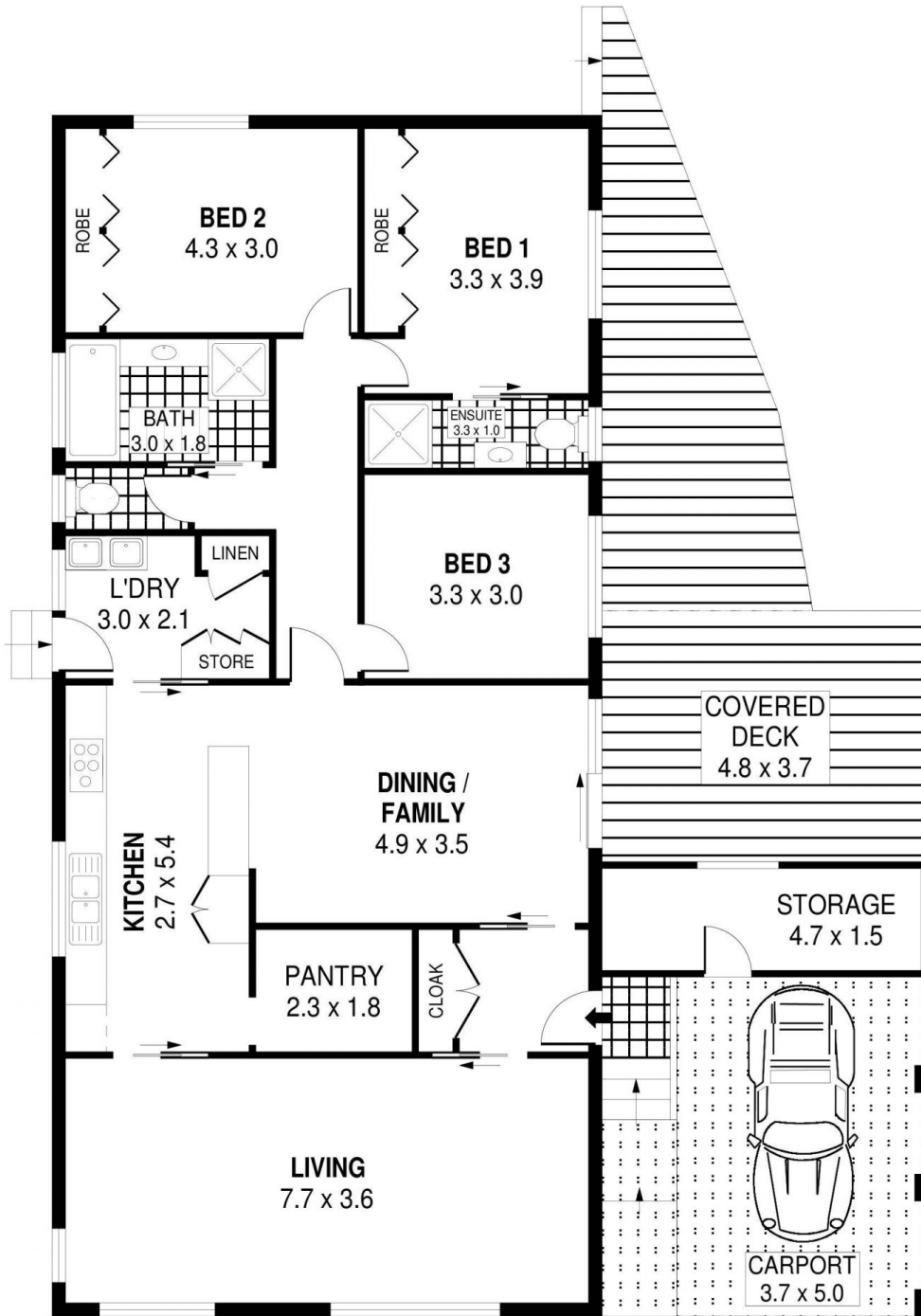
View : <https://www.mcneice.com.au/8482870>

With it's close proximity to schools, cafes, parks, Croome Road Sporting Complex and the town centre it is sure to appeal to families, first home buyers & investors.

The Main Features:

- 3 generous sized bedrooms with built in robes in beds 1 & 2 with an ensuite in the main.

[For full version visit the website](#)

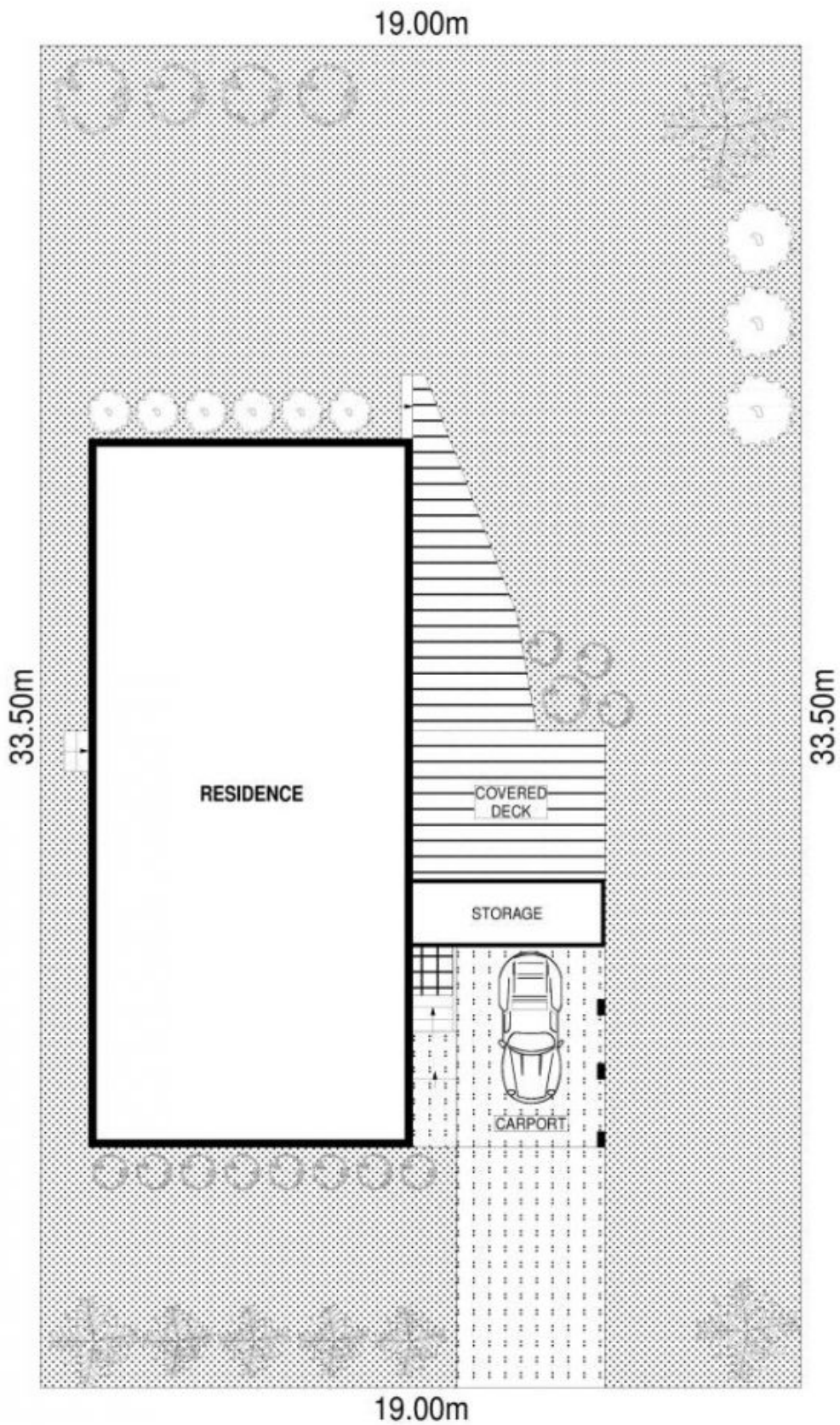


PLANS SHOWN ONLY INDICATIVE OF LAYOUT. DIMENSIONS ARE APPROXIMATE.
Ref. No: 84783

INT : 133m²
EXT : 18m²
CARPORT : 19m²
STORAGE : 7m²

88 HILLSIDE DRIVE

ALBION PARK



19.00m
SITE PLAN



SCALE (METRES)

PLANS SHOWN ONLY INDICATIVE OF LAYOUT. DIMENSIONS ARE APPROXIMATE.
 Ref. No. 84783

88 HILLSIDE DRIVE

ALBION PARK