



5 Crystal Avenue Horsley NSW

4 2 2

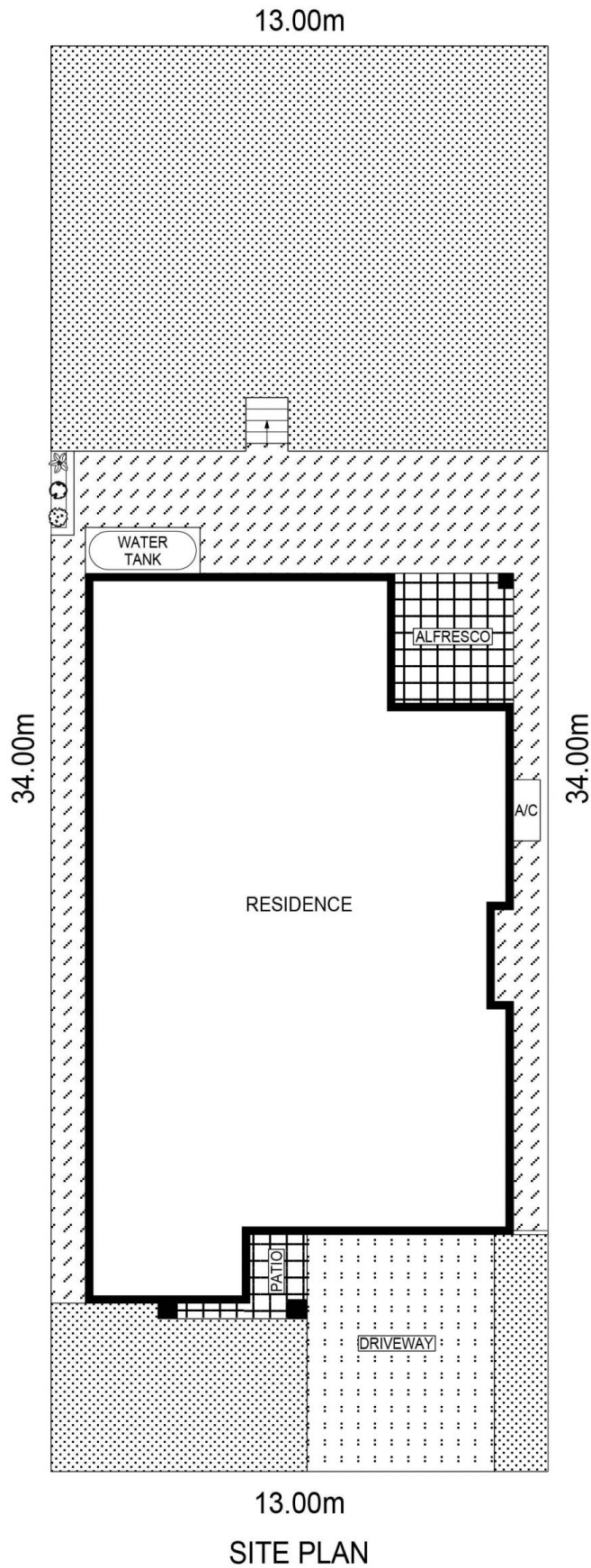
Set in a quiet pocket of the Brooks Reach Estate and exuding quality & sophistication throughout, is this spacious 4 bedroom, split level, McDonald Jones built home with beautiful contemporary finishes throughout, a clever floorplan and plenty of yard space for the kids!

Type : House
Price : \$ 740,000
Land Size : 442 sqm
View : <https://www.mcneice.com.au/8482868>

As soon as you step through the front door, you'll be surprised by the sheer size of the home, the high ceilings and the comfortable lifestyle that it offers.

Highlighting built in robes in all bedrooms, the main bedroom has a walk in robe & ensuite, 2 modern bathrooms, multiple living areas, open plan design, quality Caesarstone kitchen with loads of cupboard & bench

[For full version visit the website](#)



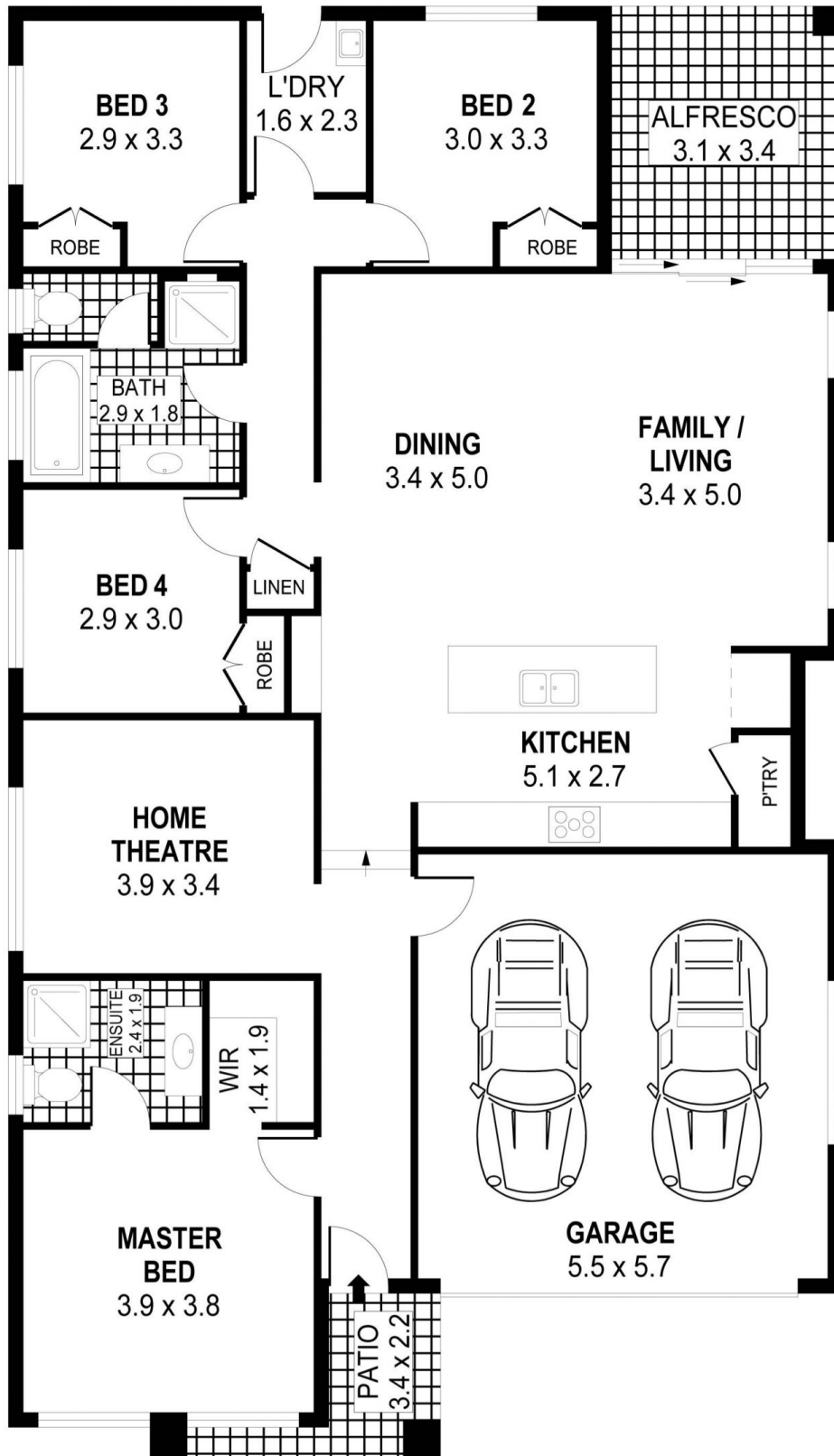
13.00m
SITE PLAN
13.00m



PLANS SHOWN ONLY INDICATIVE OF LAYOUT. DIMENSIONS ARE APPROXIMATE.
Ref. No: 84101

5 CRYSTAL AVENUE

HORSLEY



PLANS SHOWN ONLY INDICATIVE OF LAYOUT. DIMENSIONS ARE APPROXIMATE.
Ref. No. 84101

INT	:145m ²
EXT	: 15m ²
GARAGE	: 31m ²

5 CRYSTAL AVENUE

HORSLEY