



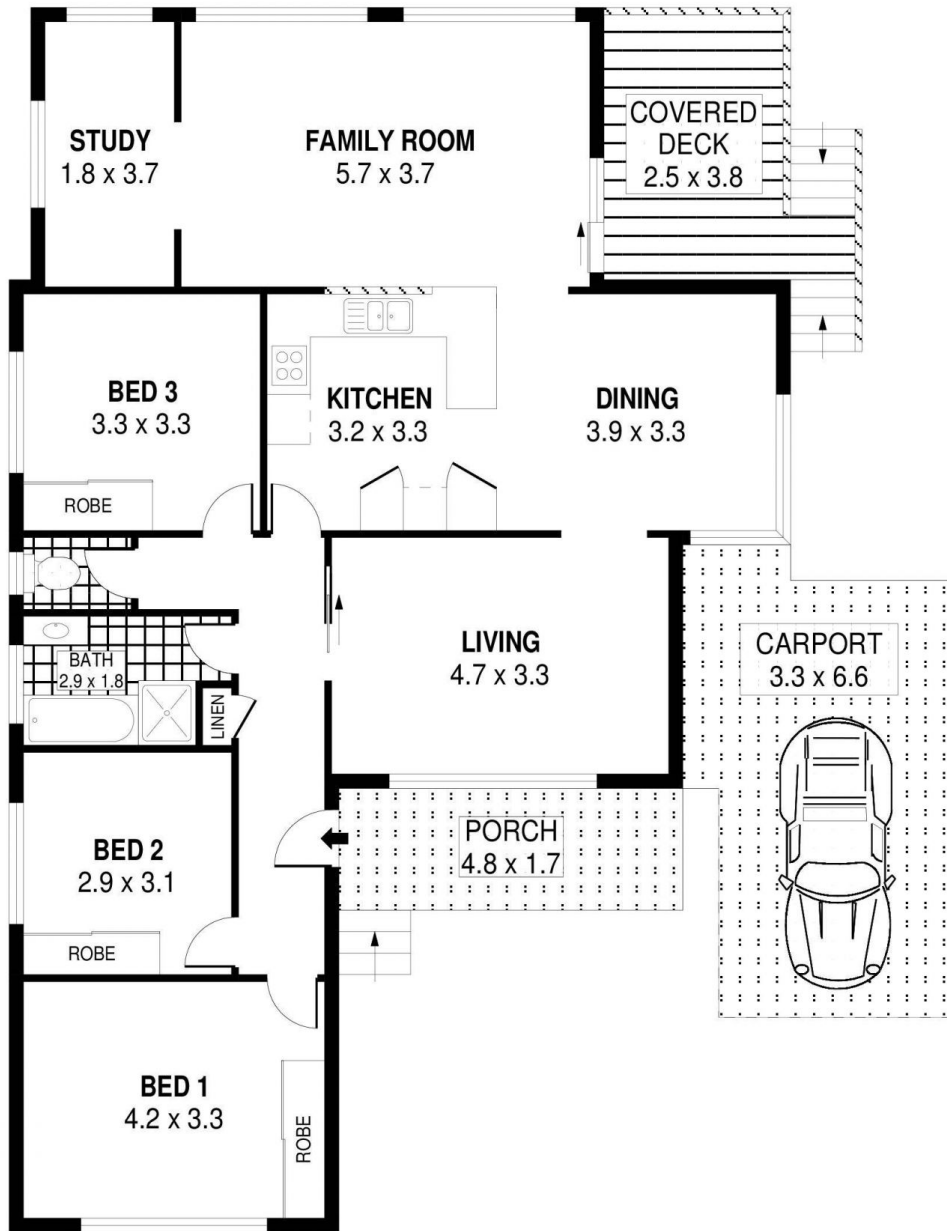
107 Lakelands Drive Dapto NSW

3 1 1

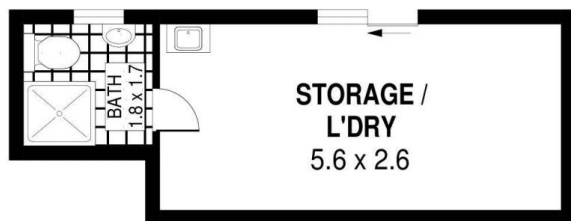
This well maintained brick veneer and tile home is situated within walking distance of the neighbourhood shops and local Primary School with transport nearby. The property consists of a formal air conditioned lounge room, separate dining area, modernised kitchen with breakfast bar, beautiful family room with split system air conditioning, separate study, 3 bedrooms, 2 with built in robes, tiled main bathroom and separate toilet. The family room opens onto a covered timber deck which overlooks the sparkling fully fenced inground pool with a large covered entertaining area as well, whilst the downstairs laundry provides a shower and toilet with there is also ample storage space available. There is a single carport and additional off street parking for vehicles with neatly maintained lawns and gardens.

Type : House
Building Size : 15 sqm
Land Size : 556 sqm
View : <https://www.mcneice.com.au/8482861>

[For full version visit the website](https://www.mcneice.com.au)



GROUND LEVEL



LOWER LEVEL

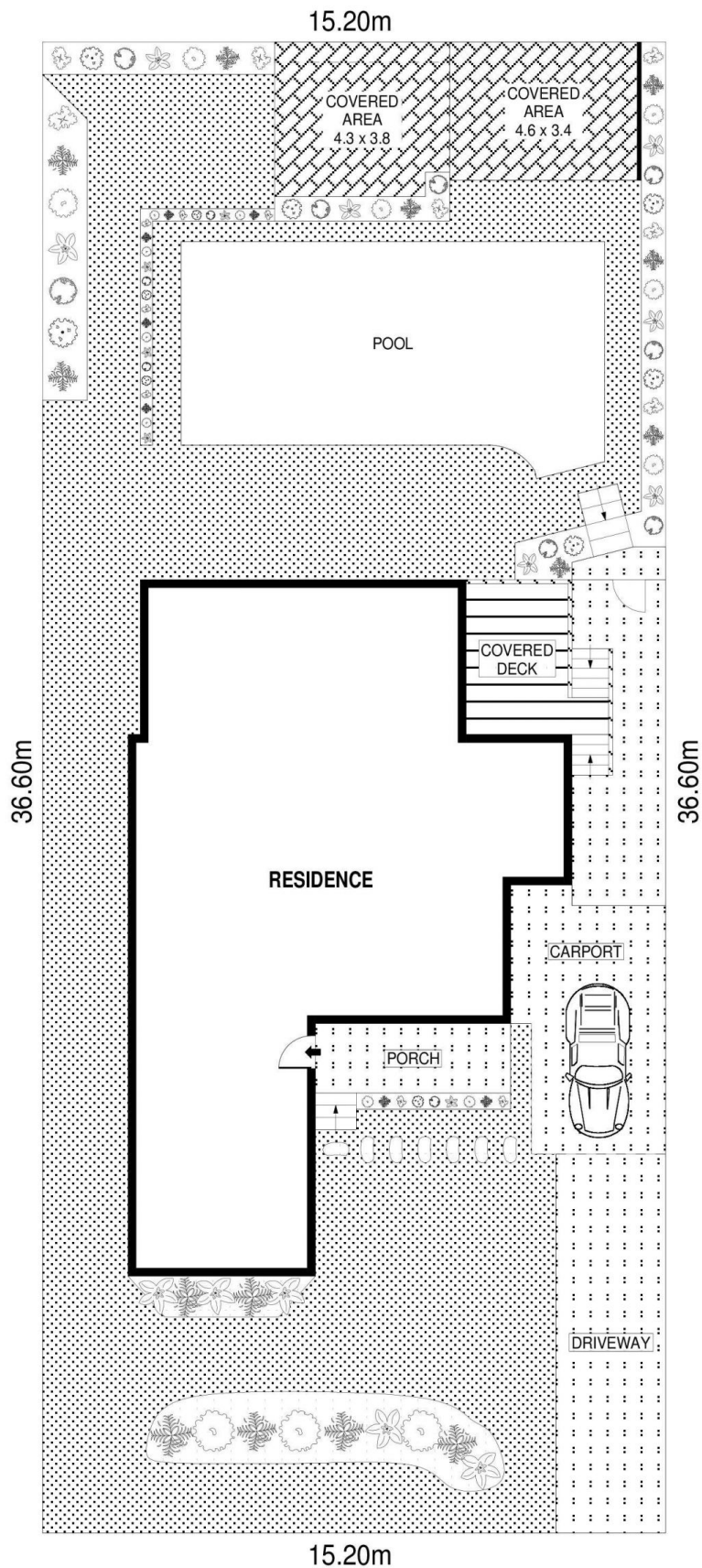


PLANS SHOWN ONLY INDICATIVE OF LAYOUT. DIMENSIONS ARE APPROXIMATE.
Ref. No: 83803

INT	:	120m ²
EXT	:	17m ²
LOWER LEVEL	:	18m ²
CARPORT	:	22m ²

107 LAKELANDS DRIVE

DAPTO



15.20m
SCALE (METRES) SITE PLAN
 15.20m

PLANS SHOWN ONLY INDICATIVE OF LAYOUT. DIMENSIONS ARE APPROXIMATE.
 Ref. No: 83803