

3 Shoreline Avenue Haywards Bay NSW

4 2 3

Please call or SMS, Filipp Lauretti on 0403 114 101 to arrange your private viewing or a virtual tour.

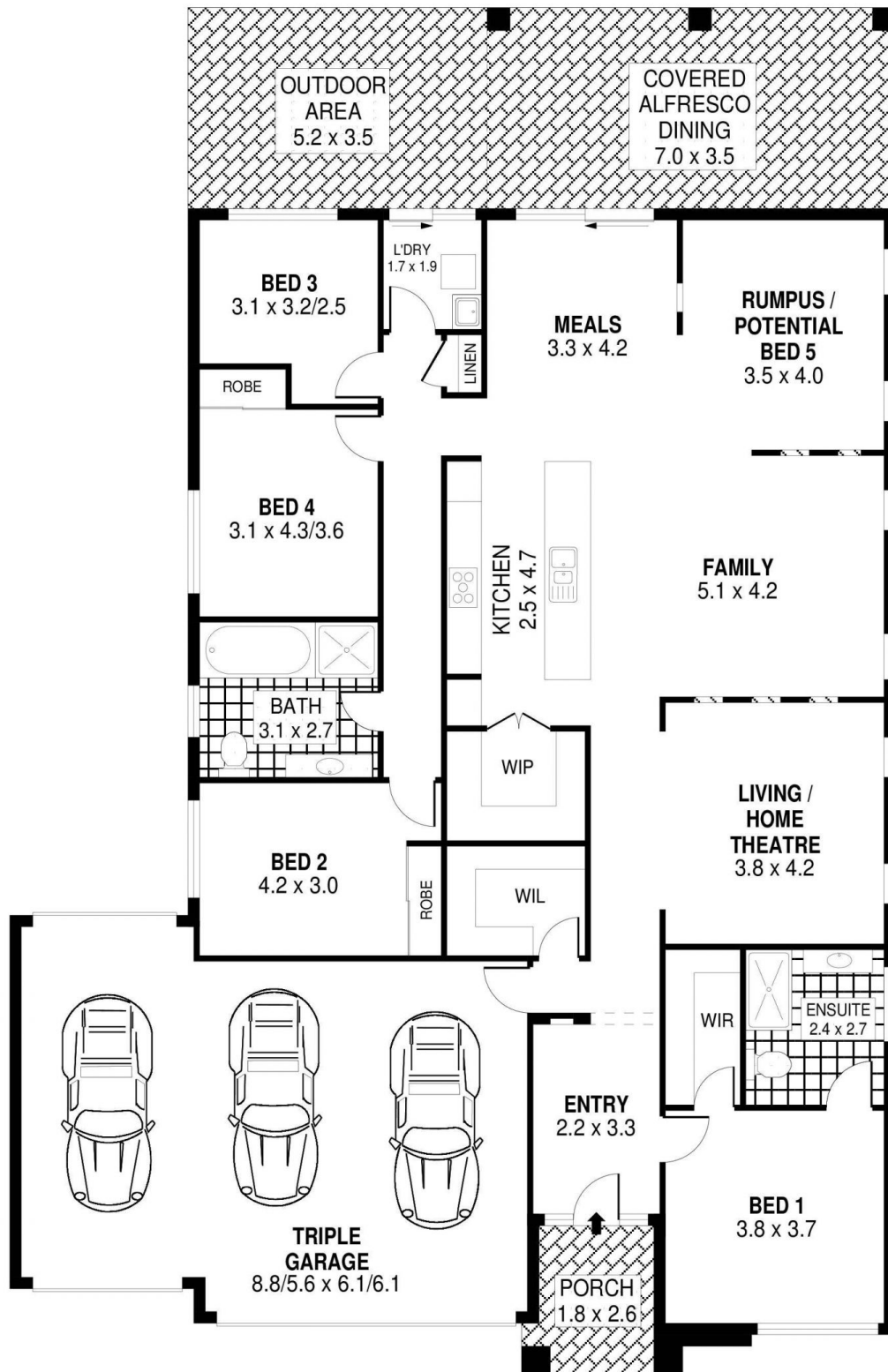
Spread over a level 558m² block, in a quiet street, is this inviting 4 bedroom, single level family home in a location which intertwines the perfect balance of serenity & urban convenience.

The free flowing & practical open plan layout with plenty of space, quality and flexibility offers a rare opportunity to secure a great home in a community based estate, to suit the growing family.

Multiple living areas and an additional rumpus room which

[For full version visit the website](https://www.mcneice.com.au/8482843)

Type : House
Price : \$ 800,000
Building Size : 26 sqm
Land Size : 558 sqm
View : <https://www.mcneice.com.au/8482843>



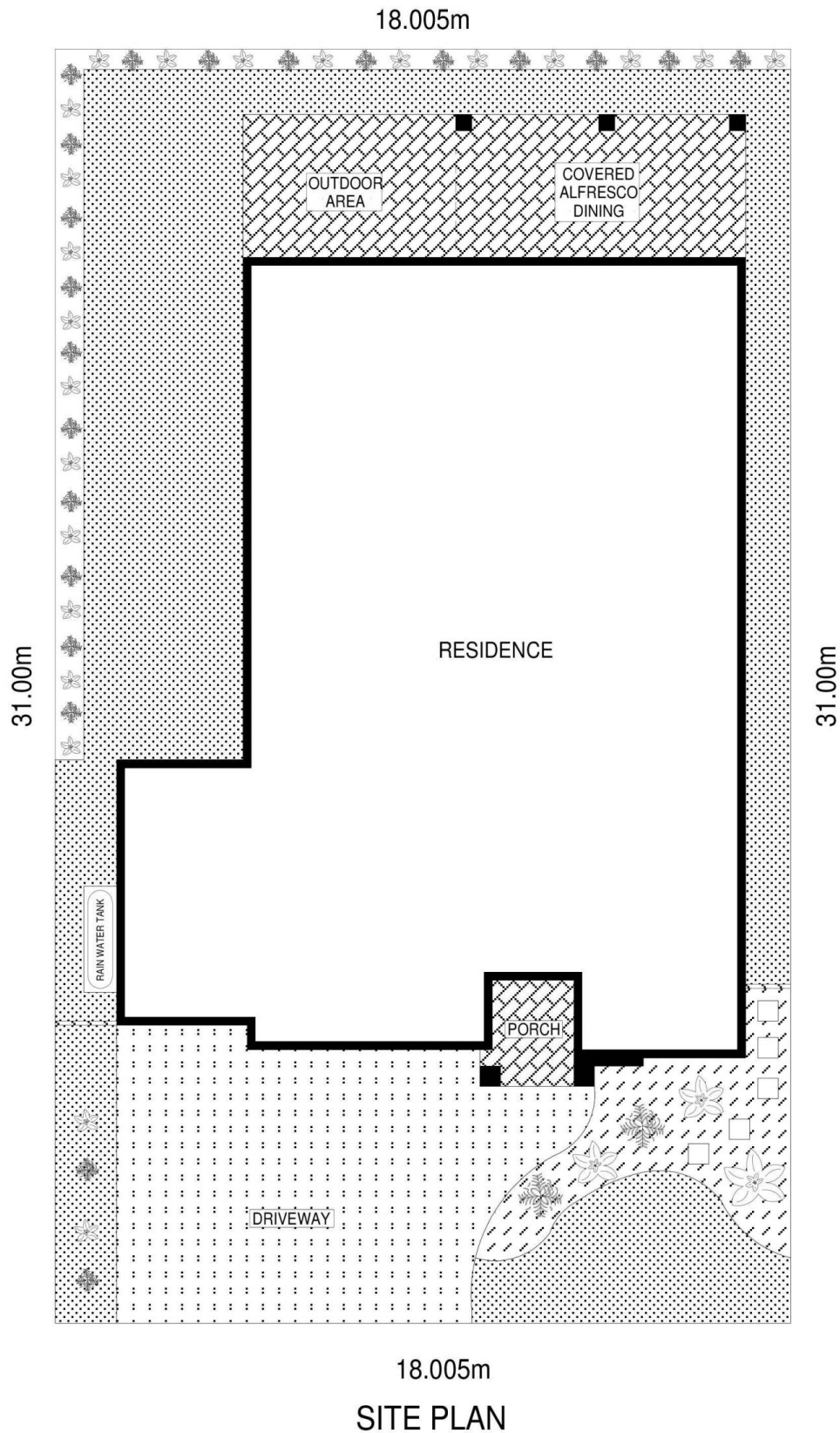
0 1 2 3 4 5 **SCALE (METRES)**

PLANS SHOWN ONLY INDICATIVE OF LAYOUT. DIMENSIONS ARE APPROXIMATE.
 Ref. No: 80301

INT : 187m²
 EXT : 49m²
 GARAGE : 54m²

3 SHORELINE AVENUE

HAYWARDS BAY



SCALE (METRES)

PLANS SHOWN ONLY INDICATIVE OF LAYOUT. DIMENSIONS ARE APPROXIMATE.
Ref. No: 80301

3 SHORELINE AVENUE

HAYWARDS BAY