



48 Mallon Avenue Horsley NSW

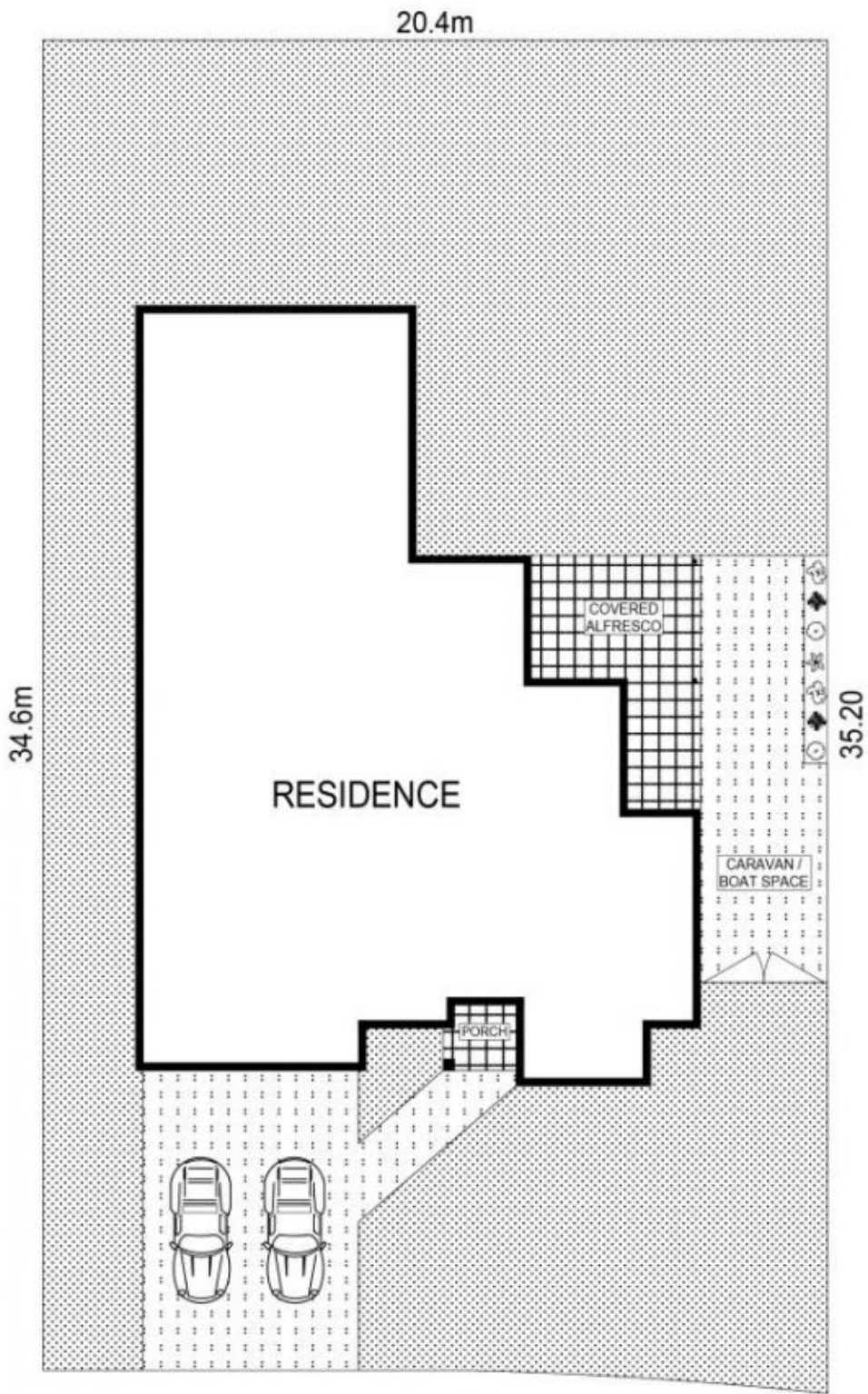
4 2 3

Set in the family friendly Brooks Reach Estate, is this spacious, single level, brick veneer residence, which is refined by its versatile design and spacious living/entertaining quarters. Showcasing a quality GJ Gardiner build, which is only 6 years young & offers 4 great sized bedrooms + separate study.

Type : House
Price : \$ 755,000
Building Size : 22 sqm
Land Size : 661 sqm
View : <https://www.mcneice.com.au/8482825>

Presenting 2 modern bathrooms, neutrally painted interiors, quality fixtures & fittings throughout, ample storage space, air conditioning, higher 9ft ceilings, multiple living spaces, large double lock up garage with internal access and an additional side access parking space for either a boat, caravan or 3rd car.

[For full version visit the website](https://www.mcneice.com.au)



SITE PLAN



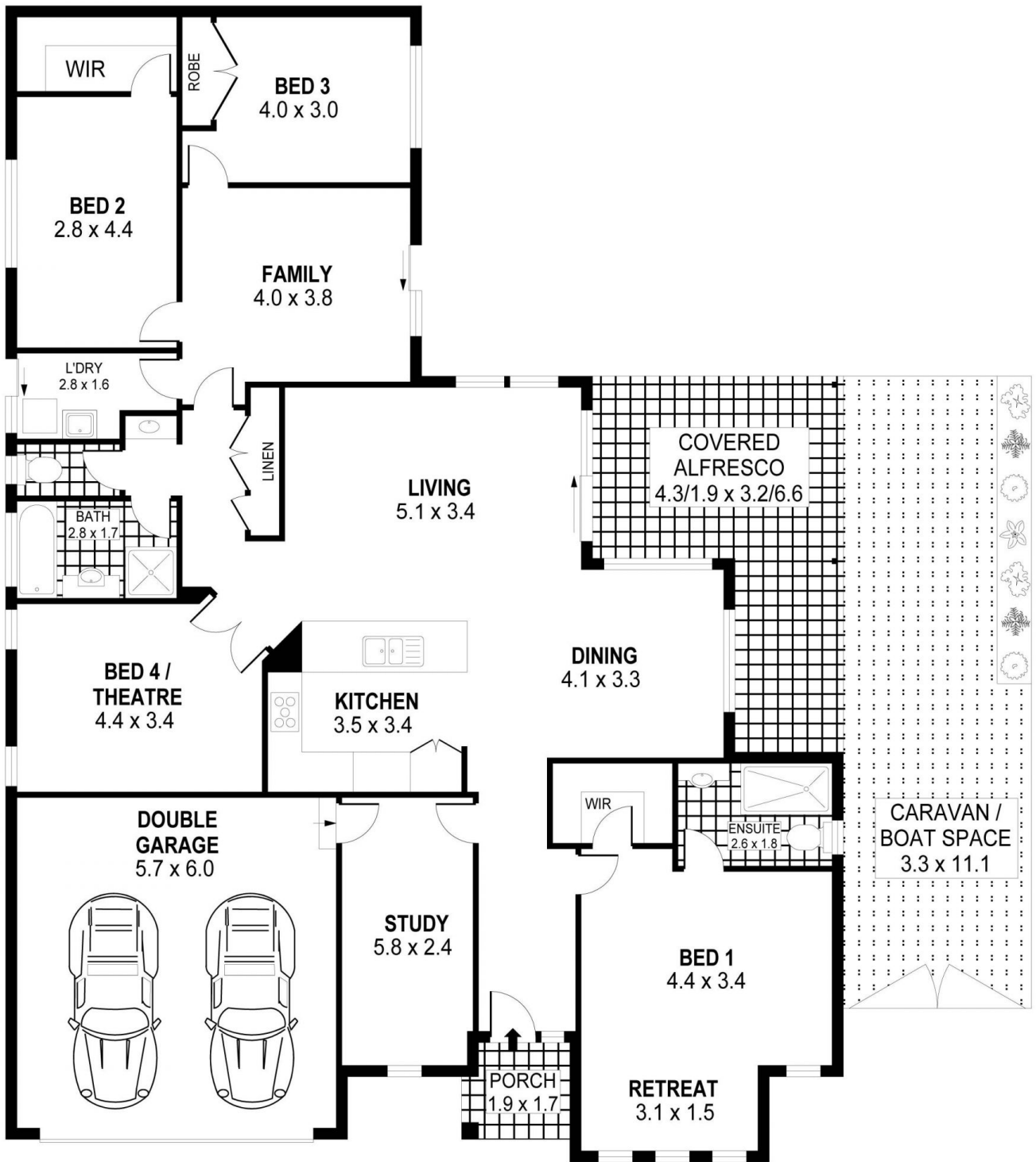
SCALE (METRES)

PLANS SHOWN ONLY INDICATIVE OF LAYOUT. DIMENSIONS ARE APPROXIMATE.
Ref. No. 75992



48 MALLON AVENUE

HORSLEY



PLANS SHOWN ONLY INDICATIVE OF LAYOUT. DIMENSIONS ARE APPROXIMATE.
Ref. No: 75992

INT : 171m²
EXT : 60m²
GARAGE : 32m²

48 MALLON AVENUE

HORSLEY