



6 Wollonyuh Crescent Horsley NSW

3 1 1

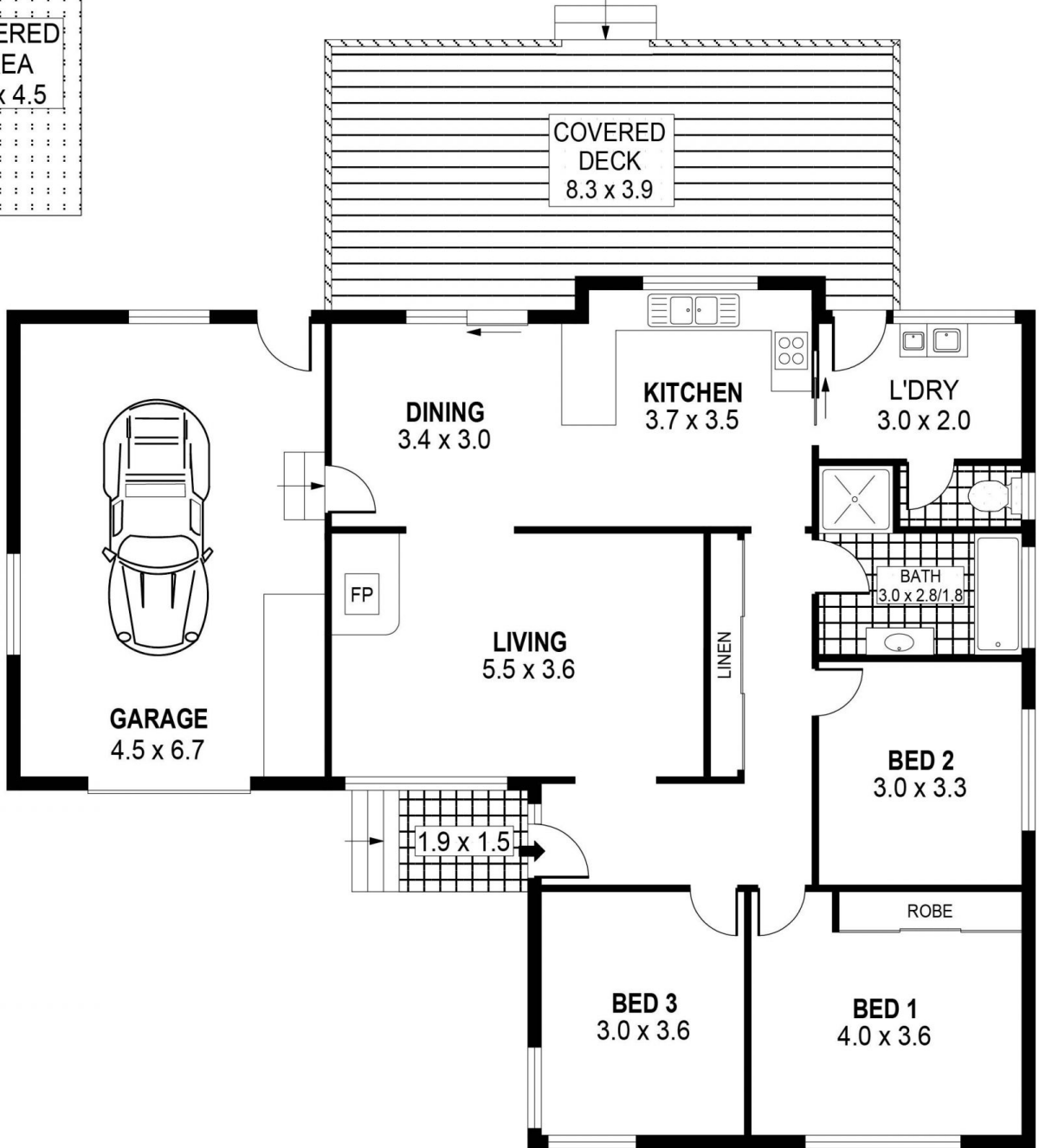
6 Wollonyuh Crescent offers a well maintained 3 bedroom brick home in one of Horsley's greatest family friendly streets. Ready to move in and enjoy the aspects this home has to offer. Some of the great features include a larger than average block, huge deck, great fireplace in the lounge room and all the rooms have great space. This one truly is a great starter or investment.

Type : House
Price : \$ 540,000
Building Size : 15 sqm
Land Size : 571.1 sqm
View : <https://www.mcneice.com.au/8482823>

The Main Features:

- 3 spacious bedrooms main with large built in wardrobes
- Generous sized lounge room with fireplace, perfect for the winters night
- Big kitchen with loads of storage options and overlooking

[For full version visit the website](https://www.mcneice.com.au)

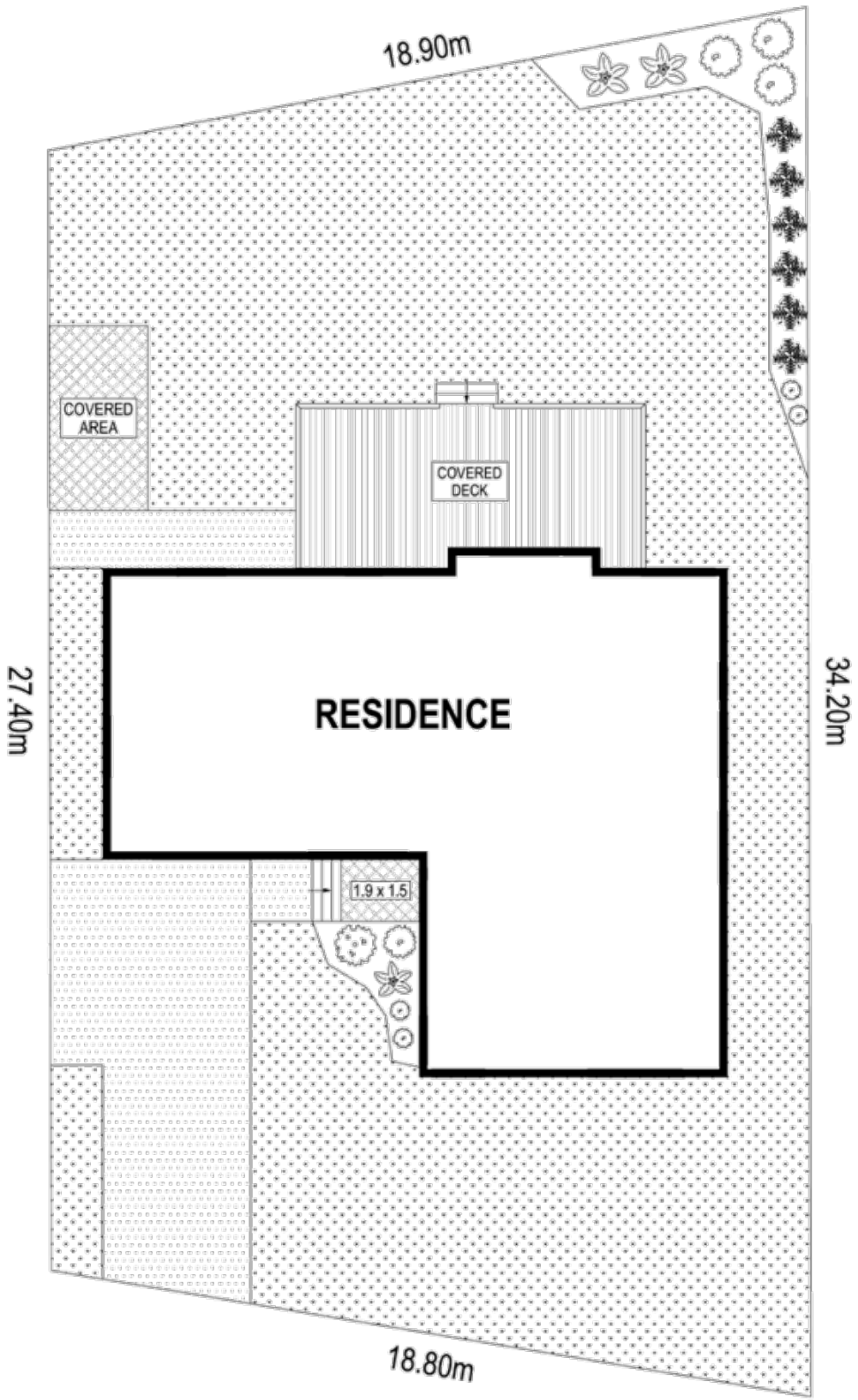


PLANS SHOWN ONLY INDICATIVE OF LAYOUT. DIMENSIONS ARE APPROXIMATE.
Ref. No: 74668

INT : 108m²
EXT : 44m²
GARAGE : 30m²

6 WOLLONYUH CRESCENT

HORSLEY



PLANS SHOWN ONLY INDICATIVE OF LAYOUT. DIMENSIONS ARE APPROXIMATE.