



## 2 Mawarra Avenue Dapto NSW

4 2 1

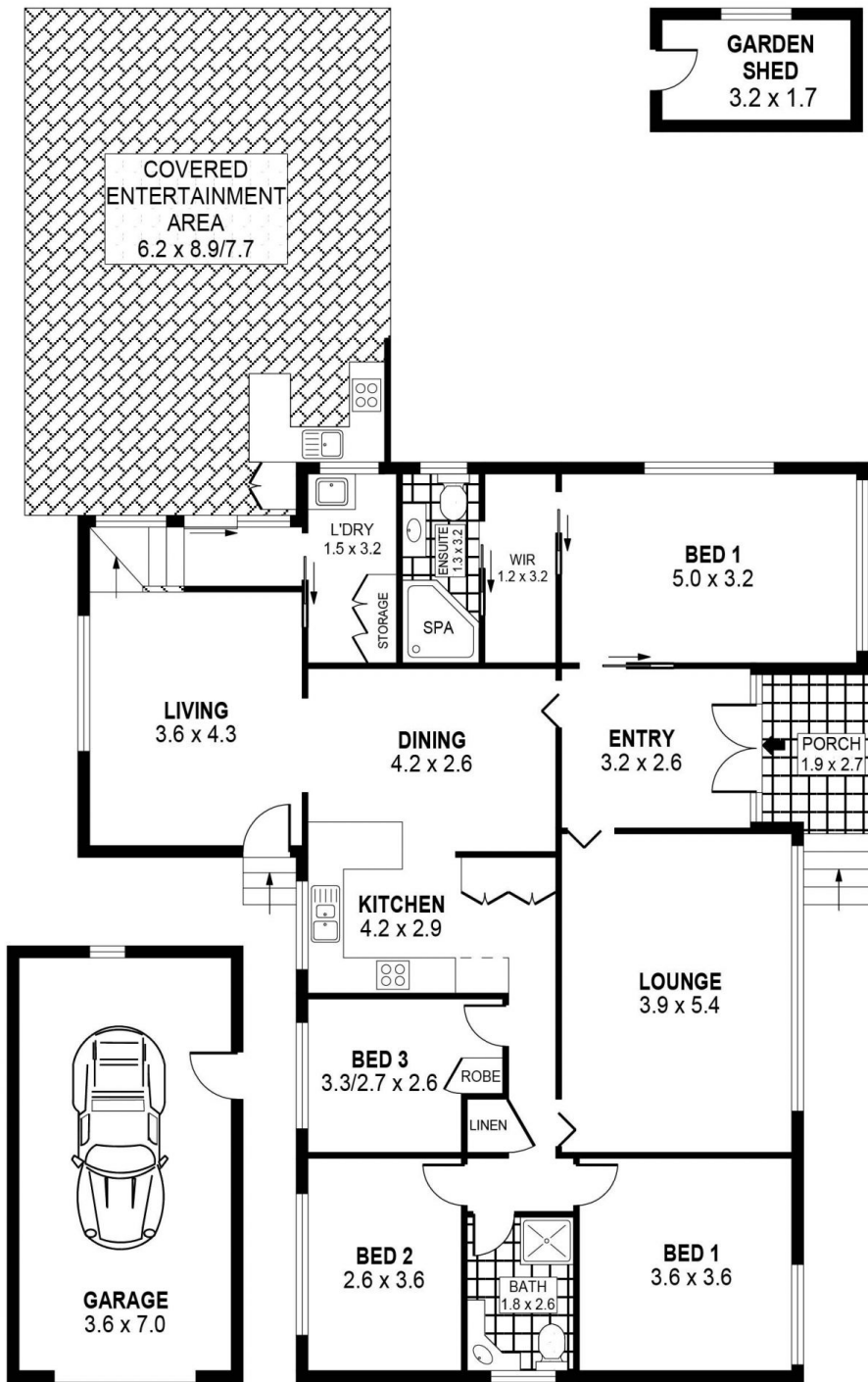
2 Mawarra Avenue Dapto is a little north facing gem that offers loads of functional living options for a larger family. Set on a corner block the property utilises every single piece of space on the block. Whether you're looking for a first home or a home that is a larger than normal, this one is certainly for you.

**Type** : House  
**Price** : \$ 560,000  
**Land Size** : 550.1 sqm  
**View** : <https://www.mcneice.com.au/8482822>

### The Main Features:

- 4 bedrooms, main with walk in robe and ensuite featuring a spa bath
- 2 separate living spaces with additional dining area too
- New kitchen with 40mm stone benches, large pantry, breakfast bench and much more

[For full version visit the website](https://www.mcneice.com.au)



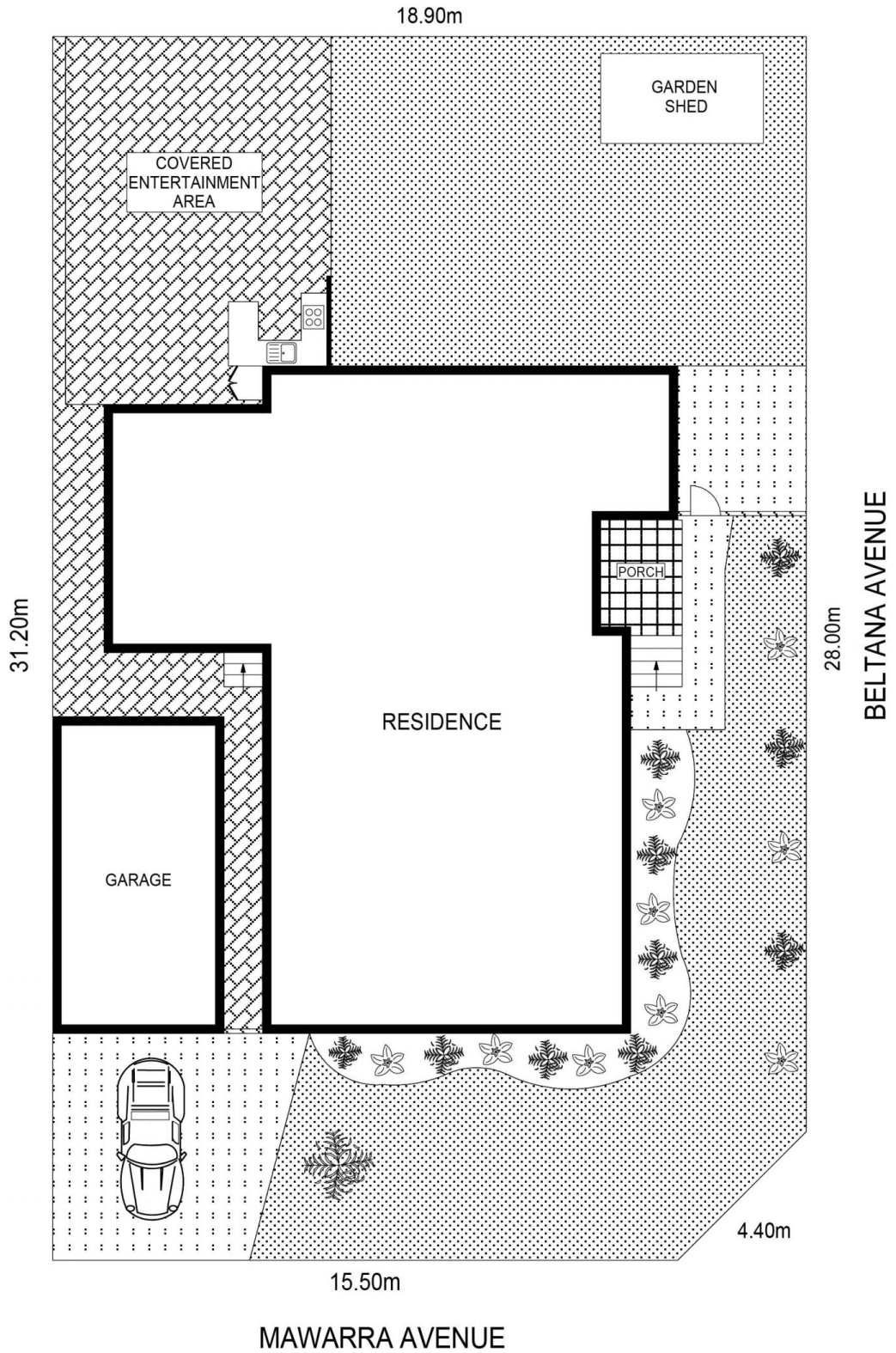
0 1 2 3 4 5  
SCALE (METRES)

PLANS SHOWN ONLY INDICATIVE OF LAYOUT. DIMENSIONS ARE APPROXIMATE.  
Ref. No: 75150

INT : 146m<sup>2</sup>  
EXT : 53m<sup>2</sup>  
GARAGE : 25m<sup>2</sup>  
DETACHED : 5m<sup>2</sup>

2 MAWARRA AVENUE

DAPTO



SITE PLAN



SCALE (METRES)

PLANS SHOWN ONLY INDICATIVE OF LAYOUT. DIMENSIONS ARE APPROXIMATE.  
Ref. No: 75150

2 MAWARRA AVENUE

DAPTO