



7 Timms Place Horsley NSW

4 2 4

Set in an ideal location in Horsley this rare family home comes to the market. Ideal for any social gathering with family and friends all while guaranteeing a secure and carefree environment for children to play. Boasting a range of great features, this home effortlessly combines convenience and comfort to meet your family's needs and is ready for you to call it home.

Type : House
Price : \$ 1,040,000
Land Size : 707 sqm
View : <https://www.mcneice.com.au/8482749>

what you will love?

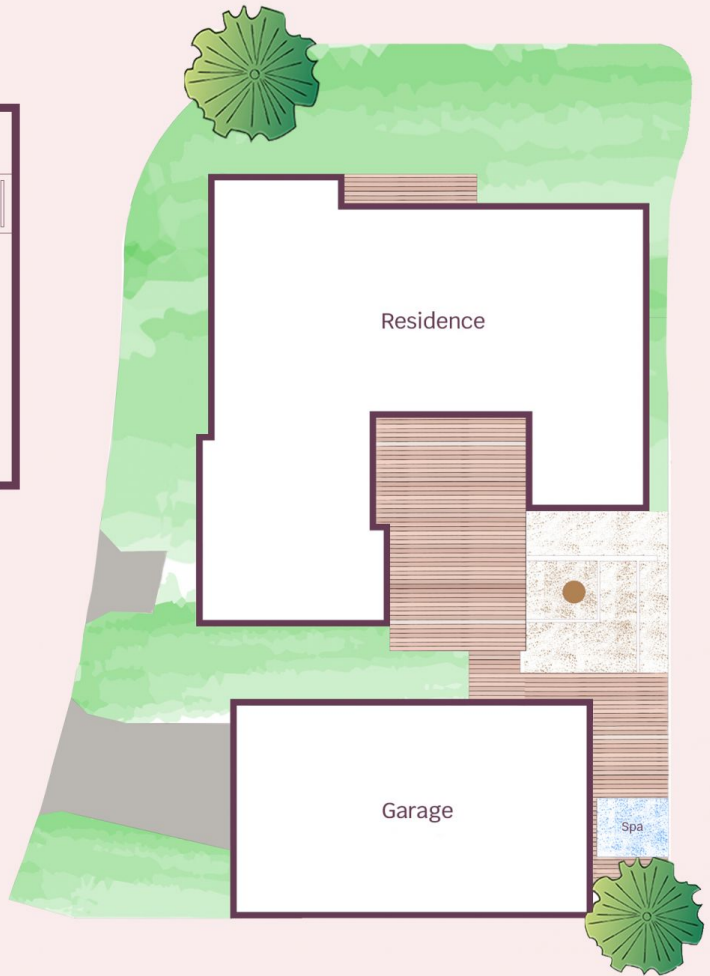
- > four generous sized bedrooms, all feature built-in wardrobes and ceiling fans
- > master bedroom with ensuite includes dual vanity and shower

[For full version visit the website](https://www.mcneice.com.au)

7 Timms Place, Horsley



Floor Plan



Site Plan



HOUSE INTERNAL AREA 136m²

Plans shown are for presentation purposes and are not part of any legal document. Dimensions are approximate