



## 32 Crystal Avenue Horsley NSW

4 2 2

contemporary | single-level | tranquility

Peacefully tucked away in the coveted Brooks Reach Estate, this elegant four bedroom home with high ceilings promises a lifestyle of seamless comfort, effortless living and endless space. Enjoying convenience to Dapto CBD, schools, shops, freeway access, public transport, parks and playgrounds, this is truly the perfect family home.

**Type** : House  
**Price** : \$ 1,015,000  
**Land Size** : 390 sqm  
**View** : <https://www.mcneice.com.au/8482748>

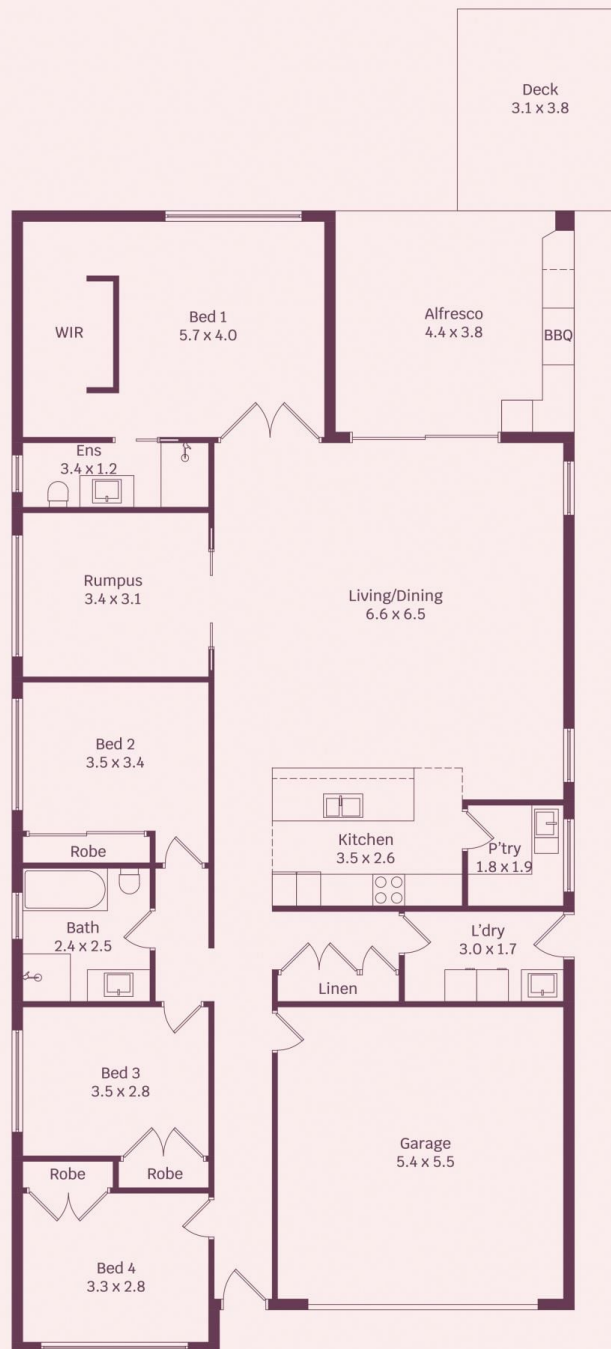
what you will love...

- > convenient and contemporary single-level home, only six years young
- > spacious main bedroom with a huge walk-in wardrobe

[For full version visit the website](#)

32 Crystal Avenue, Horsley

molenaar × mcneice



HOUSE INTERNAL AREA 191m<sup>2</sup>

HOUSE OVERALL AREA 234m<sup>2</sup>

Plans shown are for presentation purposes and are not part of any legal document.

Dimensions are approximate