

41 Brooks Reach Road Horsley NSW

3  2  1 

modern | single-level | peaceful

Welcomed by stunning escarpment views and enjoying an easy maintenance lifestyle within the Brooks Reach Estate, this modern three-bedroom, single-level home offers the perfect blended opportunity for buyers to enter the market, downsize or upsize from apartment living. The practical open plan design and 2.7m ceilings throughout exudes a sense of space and the quality McDonald Jones build consists of a solid true core steel frame construction.

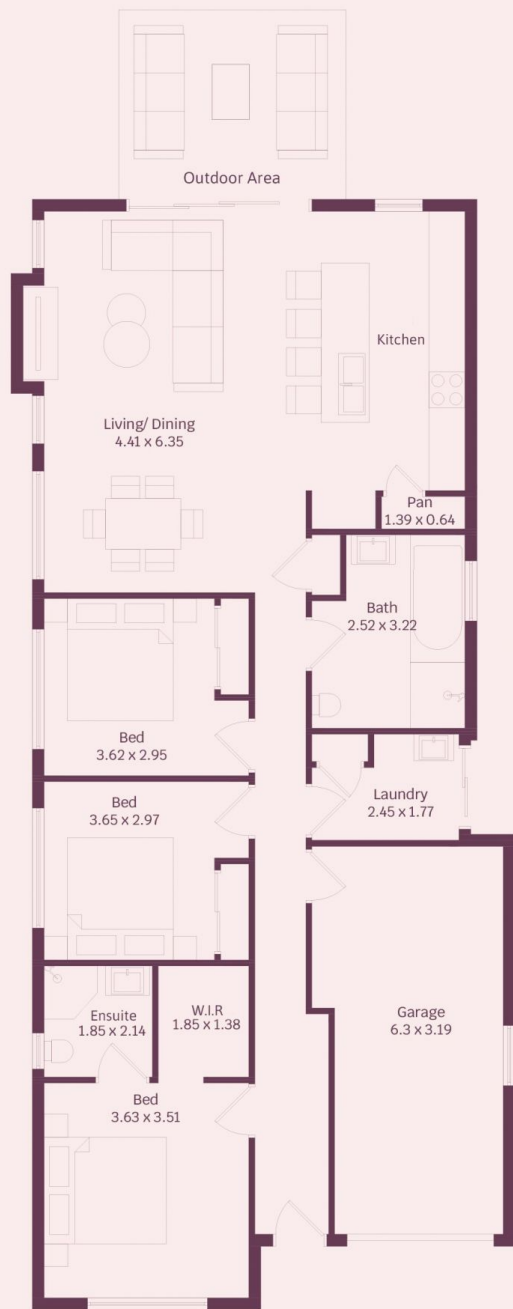
what you will love...

> modern single-level home ready to move in

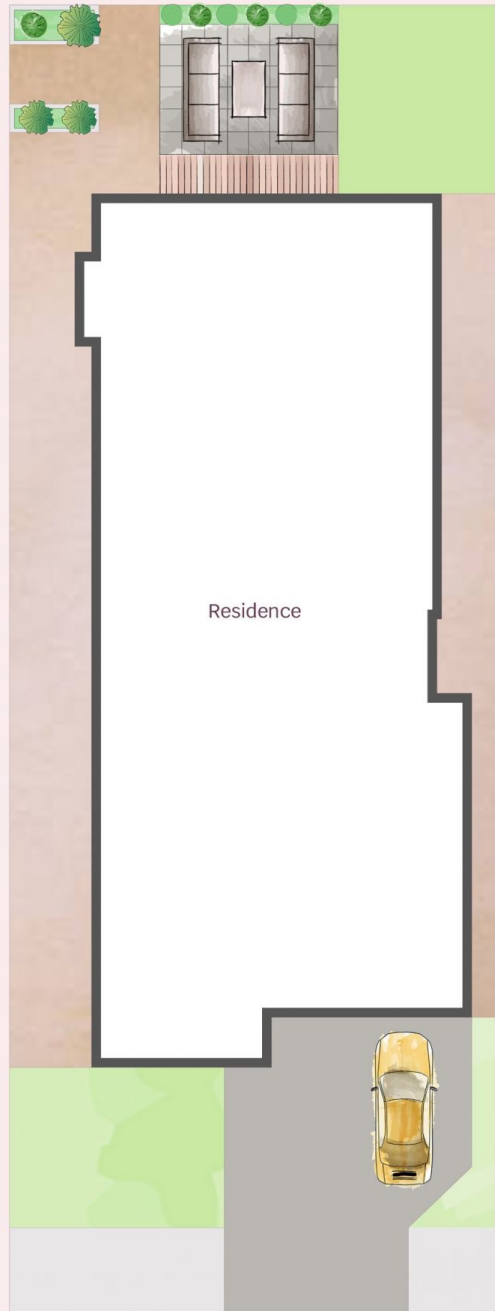
[For full version visit the website](#)

Type : House
Price : \$ 800,000
Land Size : 308 sqm
View : <https://www.mcneice.com.au/8482747>

41 Brooks Reach Road, Horsley



Floor plan



Site Plan



HOUSE INTERNAL AREA 107m²

Plans shown are for presentation purposes and are not part of any legal document. Dimensions are approximate